



Irish Climate Policy Evaluation

Country level evaluation of climate policies – the case of Ireland

7th European Environmental Evaluators Network Forum,
Brussels, Belgium

Overview

- Project background and overview
- A case study from the built environment sector

PROJECT BACKGROUND, AIMS AND OVERVIEW



Ollscoil Chathair
Bhaile Átha Cliath
Dublin City University

Project aims

- Develop climate change policy **evaluation framework**
- Conduct an **evaluation of sectoral policy responses to climate change** across both mitigation and adaptation, as well as a “**deep dive**” **evaluation of a selection of specific climate change policies** across the sectoral areas
- Ensure high impact of the project by **disseminating the project findings** through appropriate channels
- **Contribute to academic knowledge** of climate change policy and evaluation

Scope & Data: Actions & Measures

- Five sectoral work packages:
 - Built environment
 - Transport
 - Electricity generation
 - Agriculture, forestry and land use
 - Adaptation and resilience

Evaluation criteria

- **Effectiveness**
- **Efficiency**
- **Relevance**
- **Coherence**
- **EU value added**



EU ex post evaluation criteria

- **Governance**
- **Distributional impact**



APPLYING THE FRAMEWORK: A CASE STUDY OF BETTER ENERGY HOMES

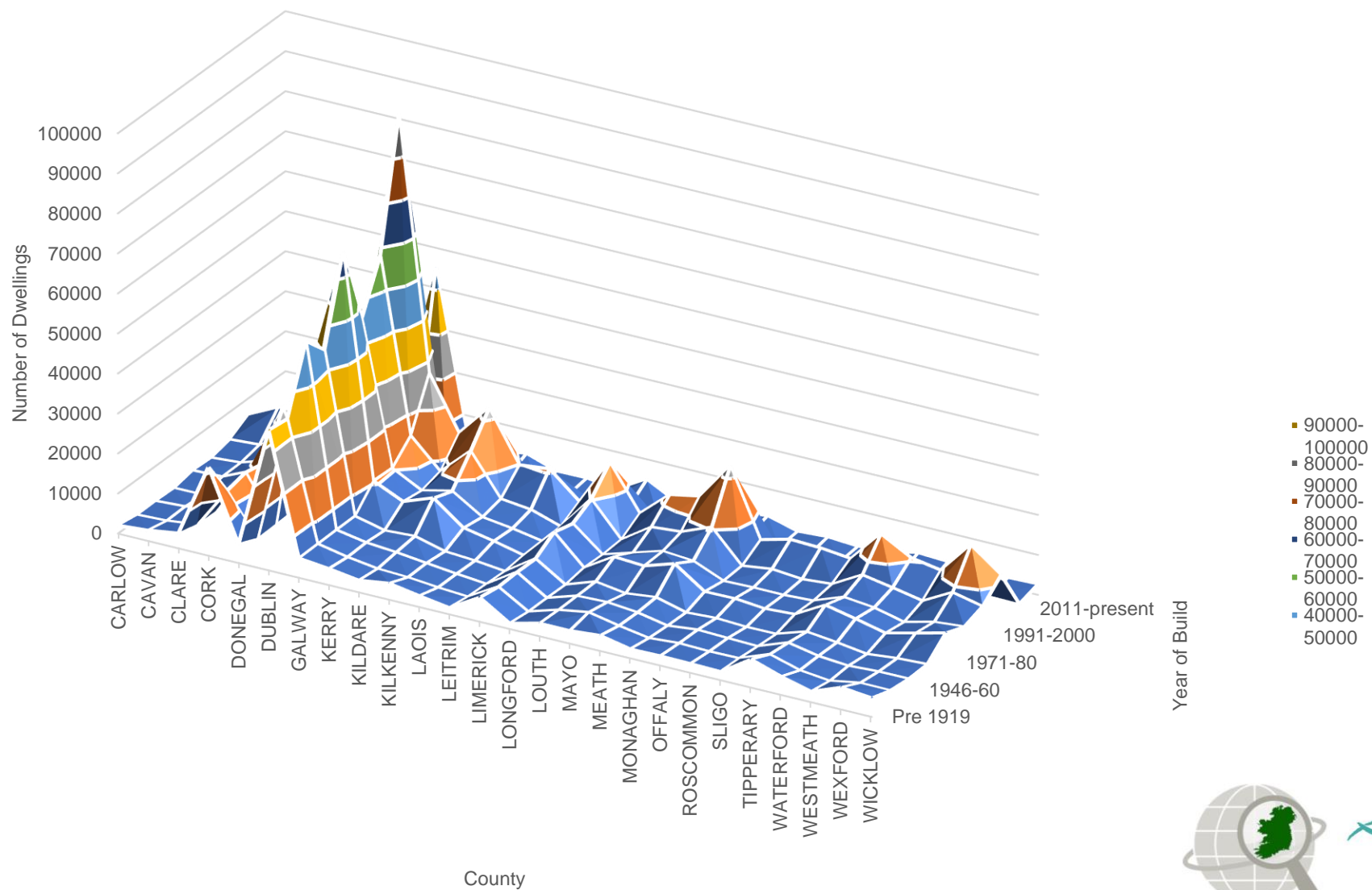


Ollscoil Chathair
Bhaile Átha Cliath
Dublin City University

Sectoral Overview

- “Decarbonising the Built Environment focuses on action being taken to improve energy efficiency and reduce greenhouse gas emissions associated with Ireland’s building stock...” – National Mitigation Plan, 2017, DCCAE
- The built environment accounts for 39,933,000 tonnes of GHG emissions with 20,302,000 tonnes from industry and 6,395,00 tonnes from services and 13,236 tonnes from households

Housing in Ireland



BEH Programme Overview

- Cash Grants for energy efficiency upgrades
 - €300 to €6,000 depending on upgrades
- 4 Energy Efficiency Measures (EEM)
 - Roof/Attic insulation
 - Wall insulation
 - Boiler upgrades
 - Solar thermal installation
- Apply through SEAI



Effectiveness

- 219,988 homes have been upgraded
- €225,433,626 in grants issued
- 236,000 tonnes of CO₂ being saved in residential sector between 2009-2016 (SEAI, 2017)

(Source: Collins and Curtis 2017)

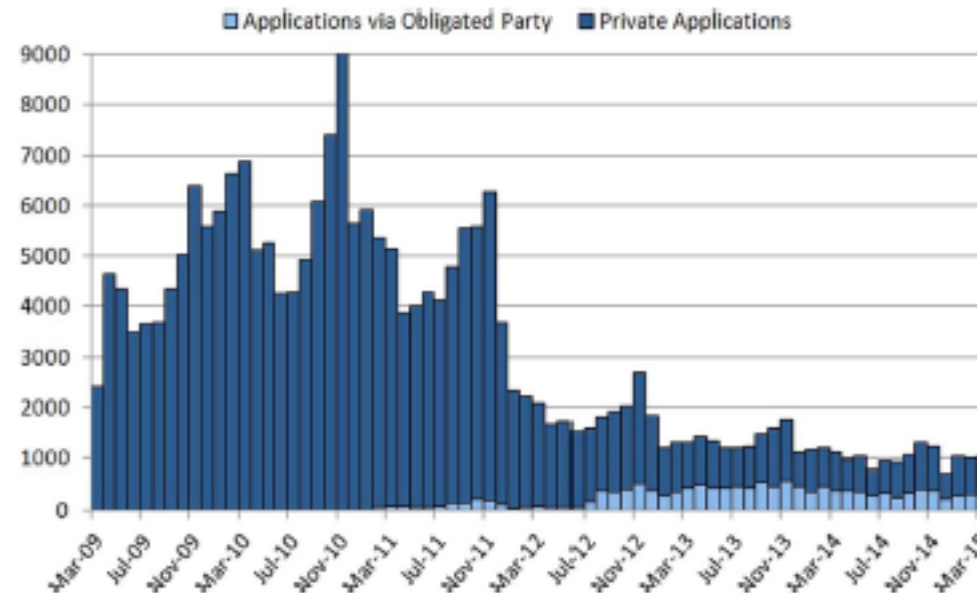
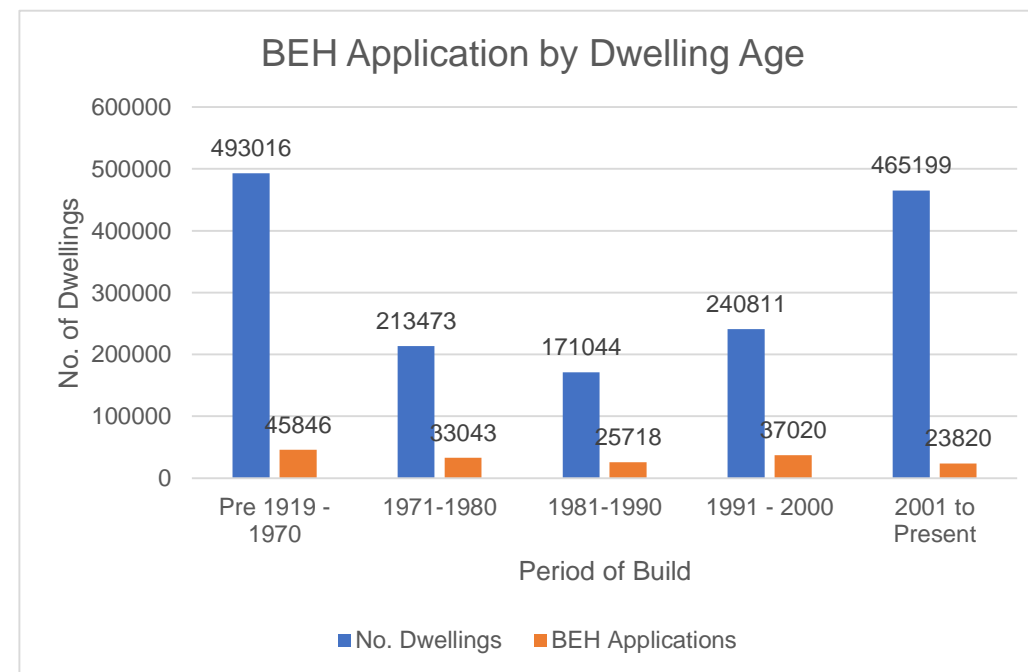


Fig. 3. First-time applications to the BEH scheme (by month).



Efficiency

- Most BEH upgrades involve 1 or 2 measures
- Measures have not changed over time
- Households may not be applying for future energy savings
- No data on pre works energy use to assess efficiency



Relevance

- Technology has not evolved with availability of new technology

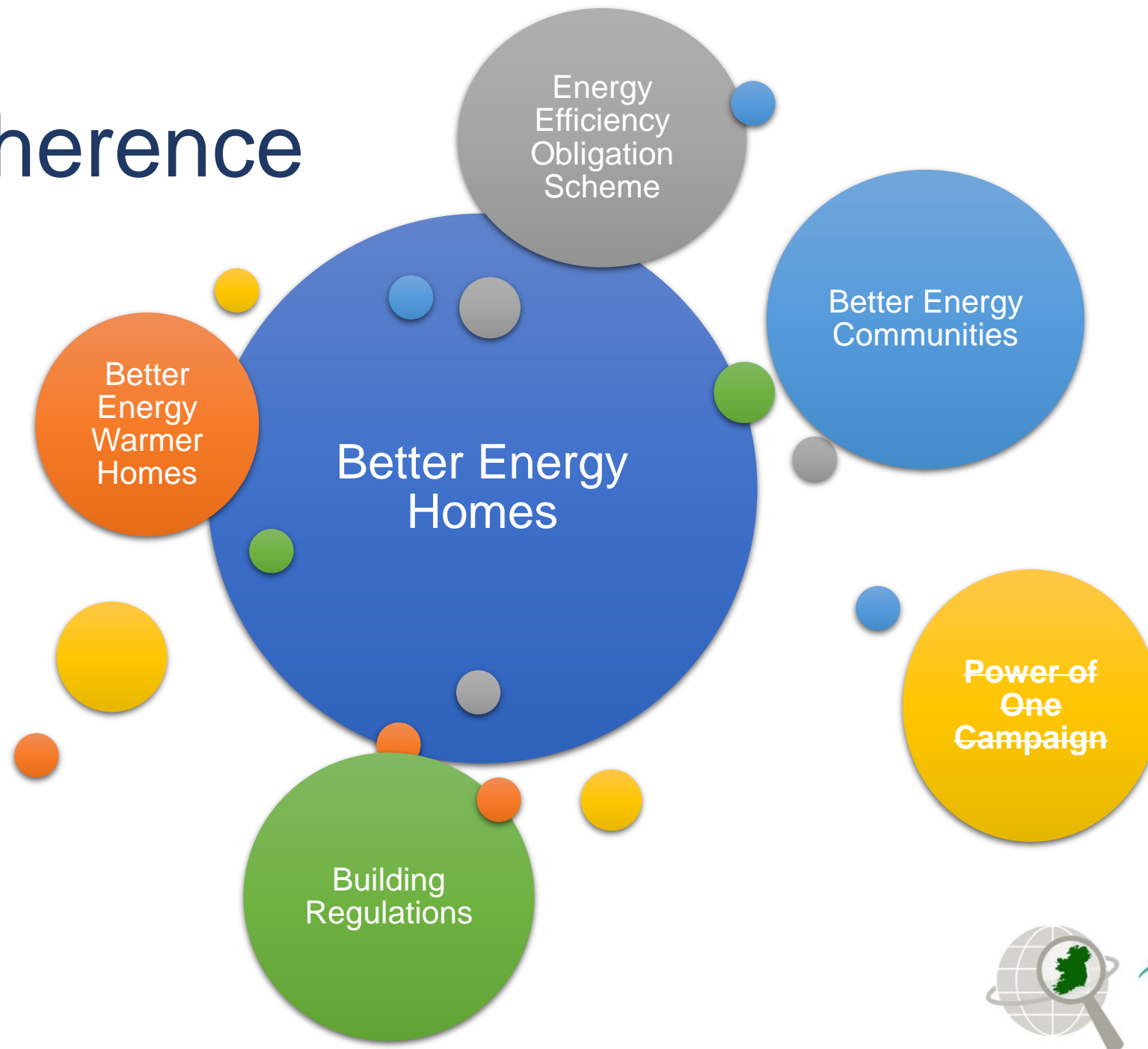
Table 1
Grant structure.

Measure	Category	Scheme 1 Mar-09 €	Scheme 2 Jun-10 €	Scheme 3 May-11 €	Scheme 4 Dec-11 €	Scheme 5 Mar-15 €
Roof	Attic Insulation	250	250	200	200	300
Wall	Cavity wall insulation	400	400	320	250	300
	Internal dry-lining	2500	2500	2000	-	-
	Apartment or mid-terrace house	-	-	-	900	1200
	Semi-detached or end of terrace	-	-	-	1350	1800
	Detached house	-	-	-	1800	2400
	External wall insulation	4000	4000	4000	-	-
	Apartment or mid-terrace house	-	-	-	1800	2250
	Semi-detached or end of terrace	-	-	-	2700	3400
	Detached house	-	-	-	3600	4500
Heating system	High efficiency boiler (oil or gas) upgrade with heating controls	700	700	560	560	700
	Heating controls upgrade only	500	500	400	400	600
	Solar heating	-	-	800	800	1200
BER	Before and after building energy rating	100	-	-	-	-
	After works building energy rating	-	100	80	50	50
Bonus	Bonus for 3rd measure	-	-	-	-	300
	Bonus for 4th measure	-	-	-	-	100

(Source: Collins and Curtis 2017)

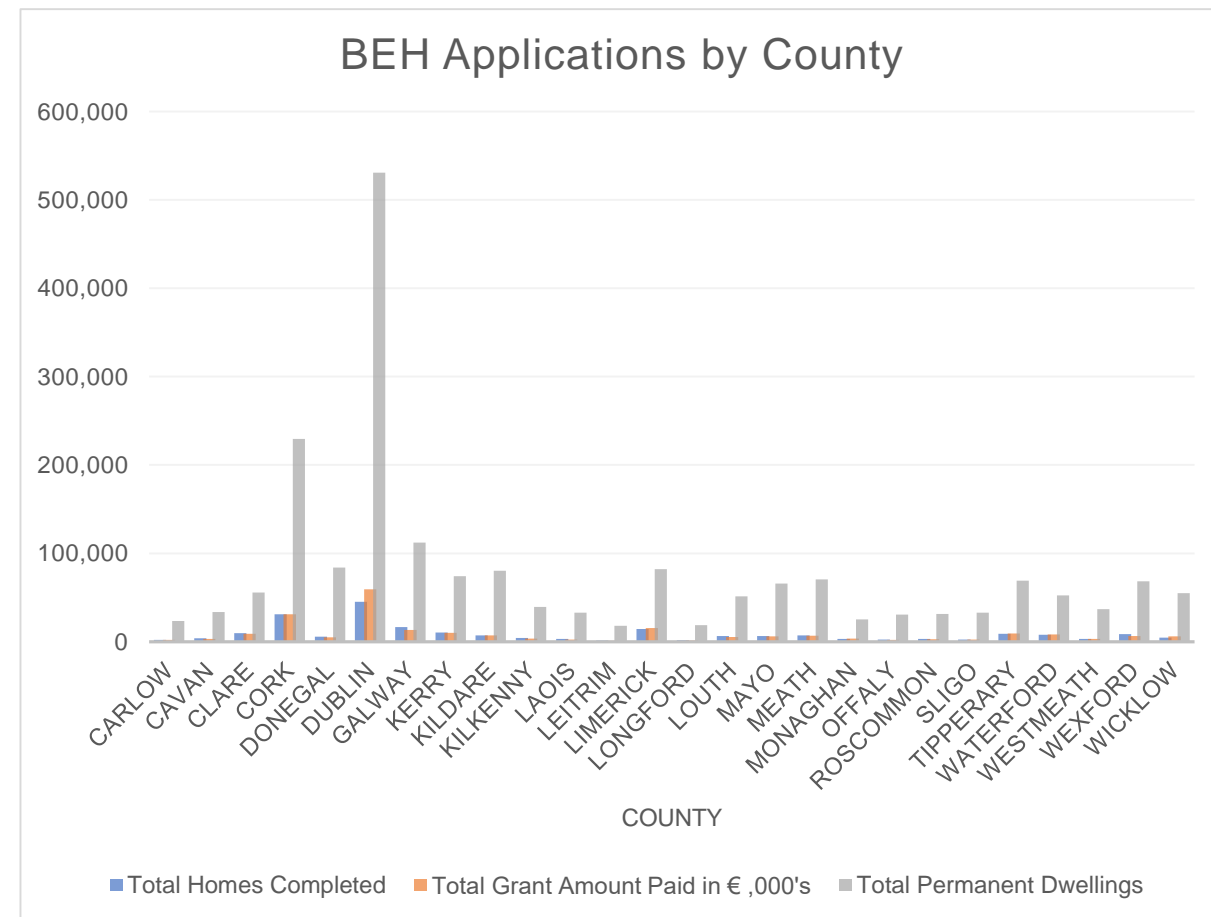


Coherence

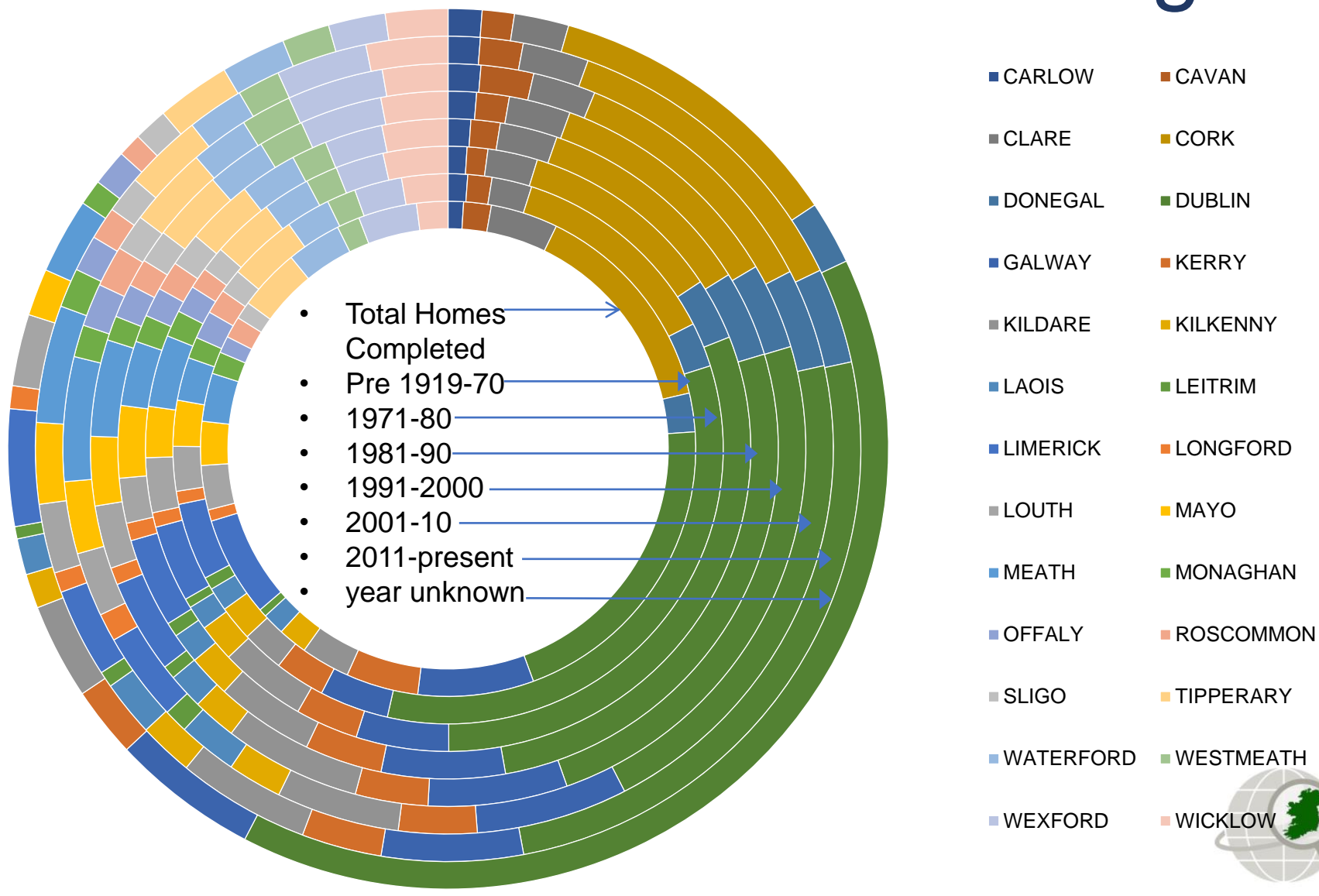


Distributional impacts

- Mostly urban
- Higher SES groups
- Homes built between 1970 - 2006



Distribution: BEH & Housing



Governance

- Programme managed by SEAI
- Additional stakeholders
 - Households
 - Contractors
 - Obligated Parties (energy service providers)
- Does not appear that stakeholders have been engaged in programme development

Gaps & Recommendations

- Data
- Information/Education
- Scheme Design