

The Environmental Noise Directive (END) requires EU member states to assess exposure to noise from key transport and industrial sources with two initial reporting phases: 2007 and 2012. Where the recommended thresholds for day and night indicators are exceeded, action plans are to be implemented. This country fiche presents data related to END assessments as reported to EEA by 15th April 2016 for the two key END indicators: L_{den} (day evening and night exposure) and L_{night} (night time exposure). 2012 strategic noise maps reported are presented, as well as HIA calculations for annoyance and sleep disturbance, hospital admissions and mortality. Trends are presented as the change in exposure from 2007 to 2012, for comparable sources only.

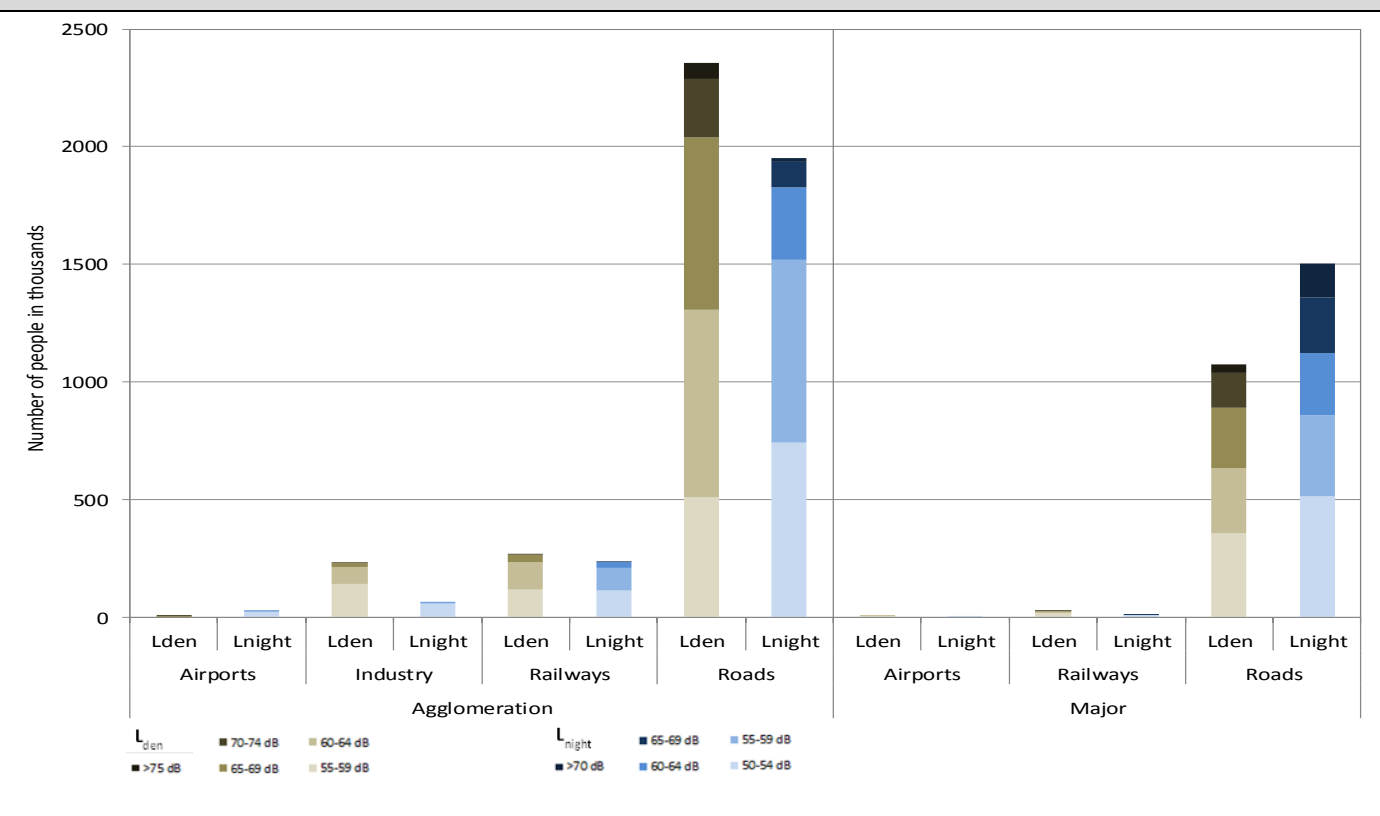


ROMANIA

Noise sources covered by this assessment

Agglomerations > 100.000 inhabitants	Arad, Bacau, Baia Mare, Botosani, Braila, Brasov, Bucharest, Buzau, Cluj-Napoca, Constanta, Craiova, Galati, Iasi, Oradea, Pitesti, Ploiesti, Sibiu, Targu Mures, Timisoara 19 agglomerations in total, covering 5.105.678 inhabitants
Major airports > 50.000 movements per year	Bucharest Henry Coanda International Airport 1 major airports in total
Major roads > 3 million vehicles per year	3270 km in total
Major railways > 30.000 train passages per year	119 km in total

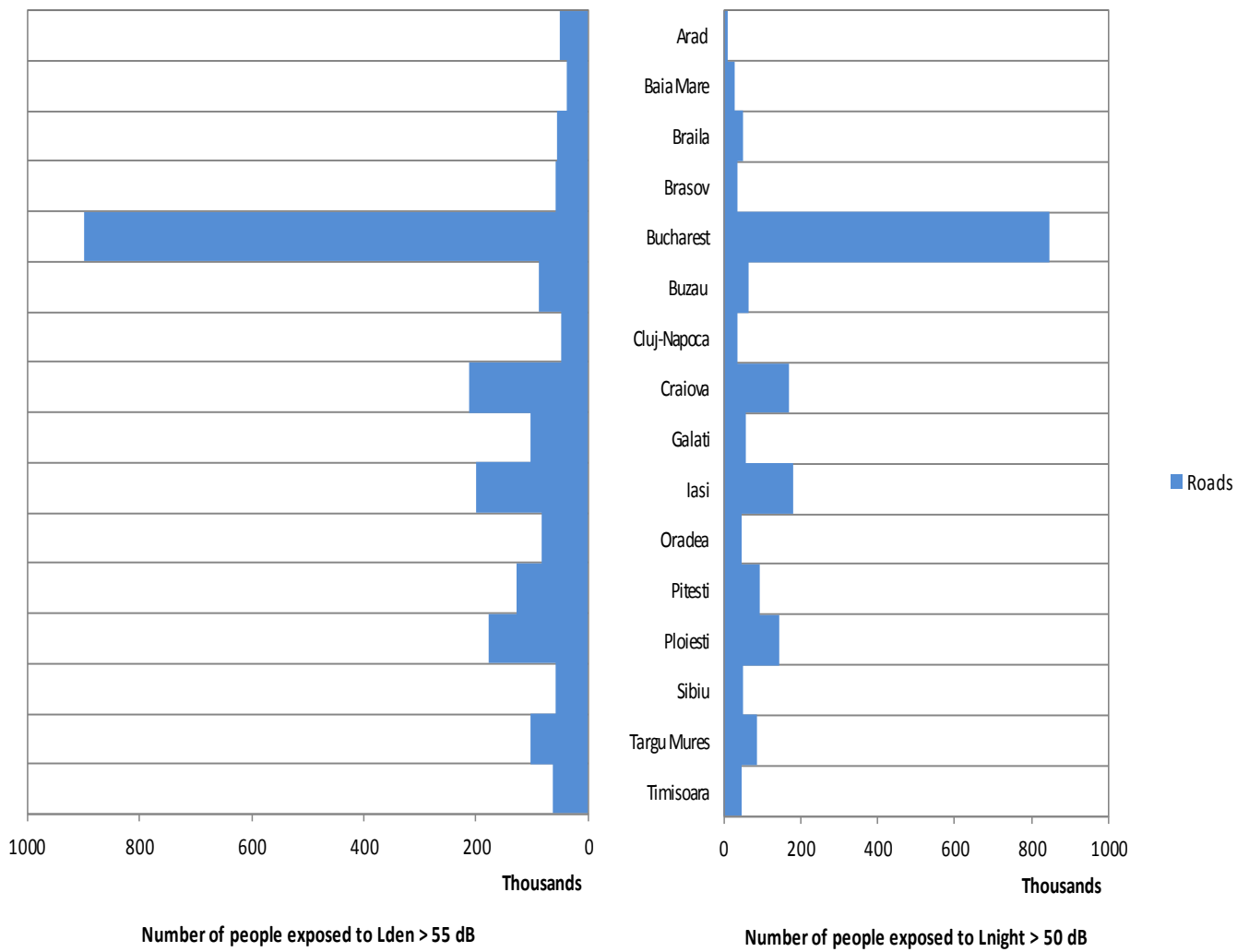
Number of people exposed to different noise bands per L_{den} and L_{night} (2012)



Data not provided in 3 agglomerations for aircraft noise, in 3 agglomerations for industrial noise, in 3 agglomerations for railway noise and in 3 agglomerations for road noise, out of 19 agglomerations.

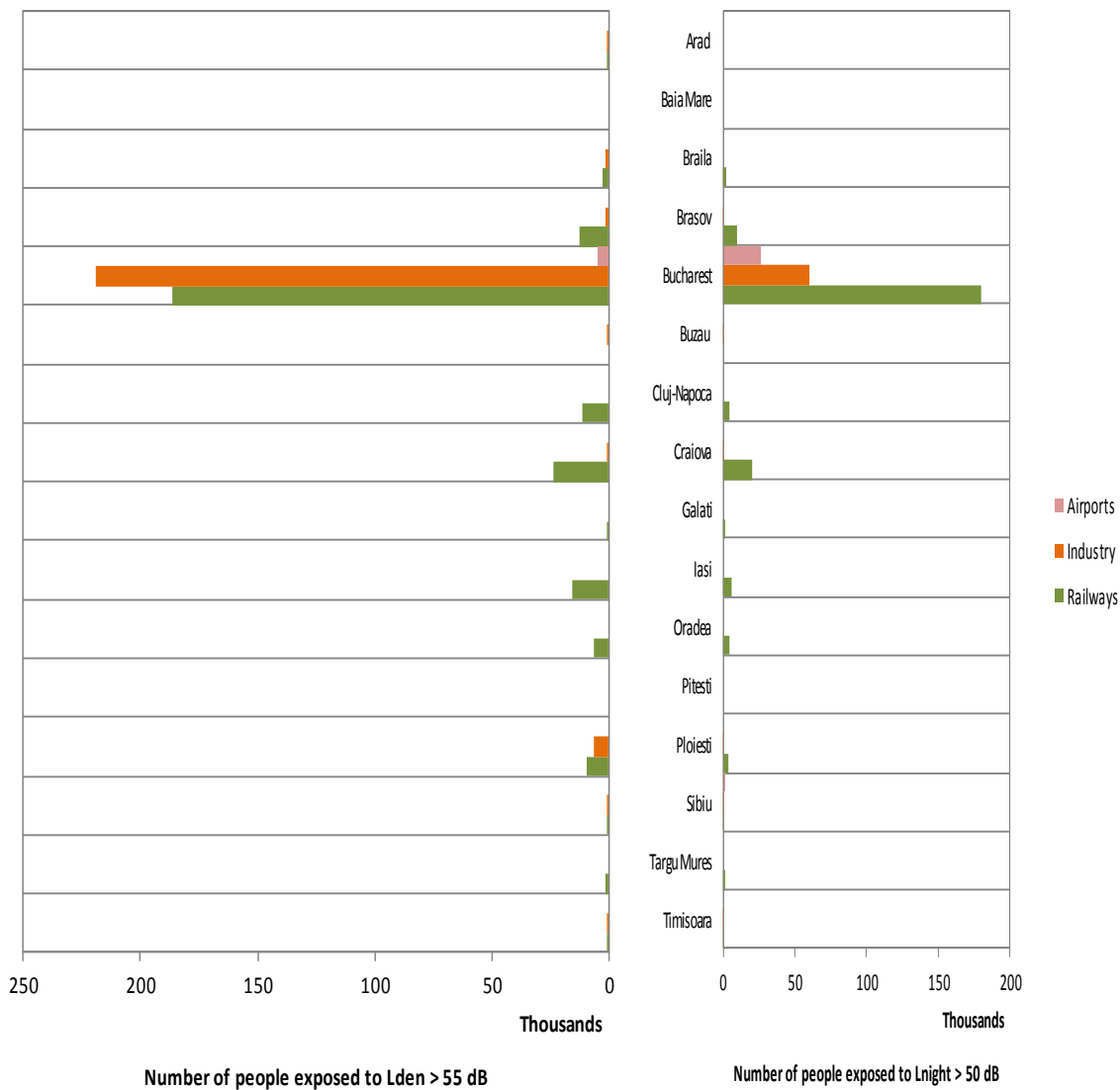
Data not applicable in 7 agglomerations for aircraft noise, out of 19 agglomerations.

Total number of people exposed to road noise inside agglomerations (2012)



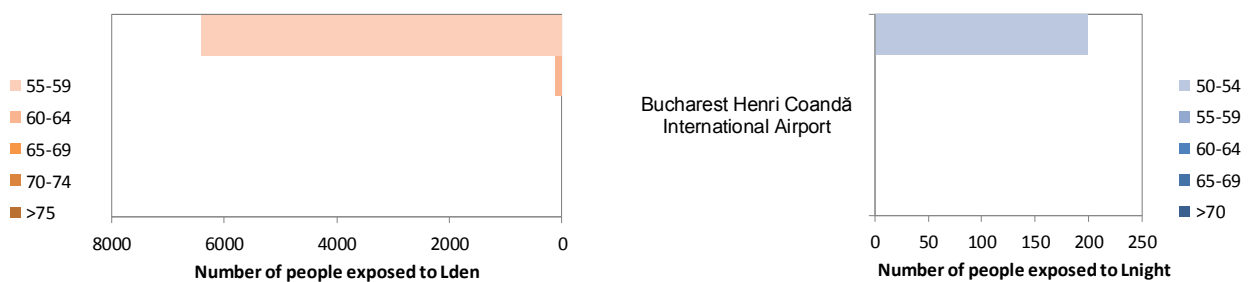
Bacau, Botosani and Constanta have not provided data on noise exposure.

Total number of people exposed to railway, aircraft and industrial noise inside agglomerations (2012)



Bacau, Botosani and Constanta have not provided data on noise exposure.

Total number of people exposed to Major Airports outside agglomerations (2012)



Noise contour maps (2012)

Major roads

No contour maps delivered in spatial format

Major railways

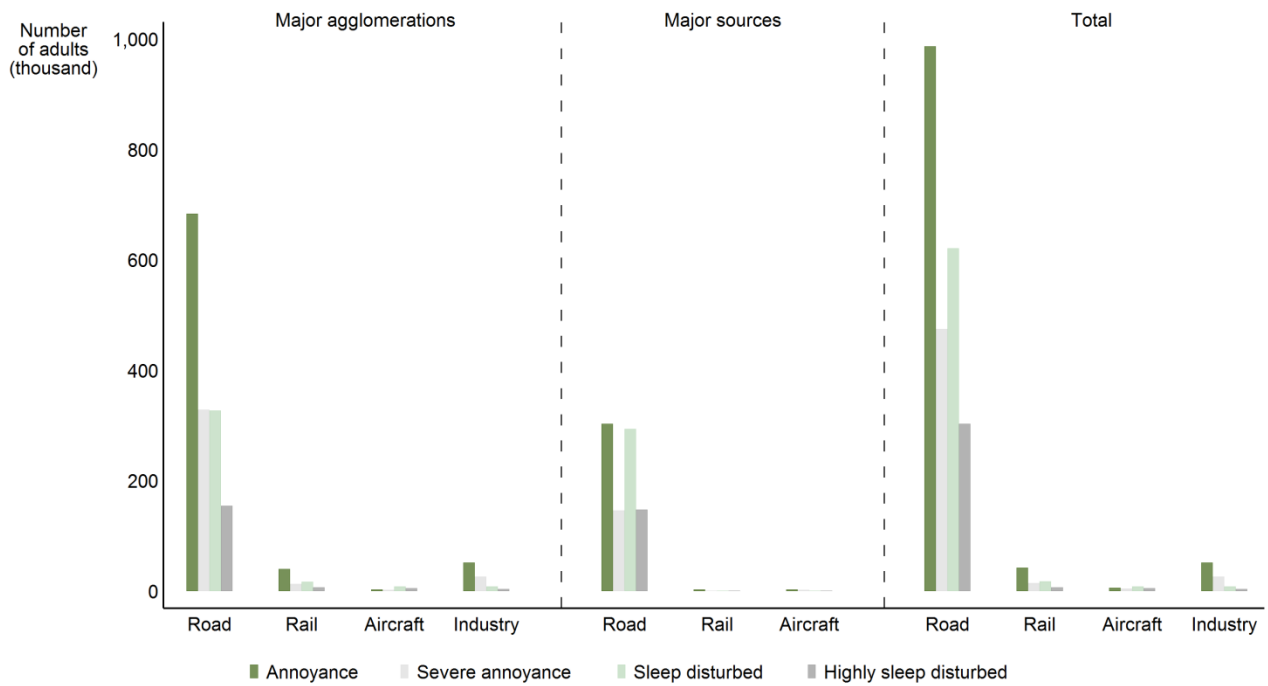
No contour maps delivered in spatial format

Major airports

No contour maps delivered in spatial format

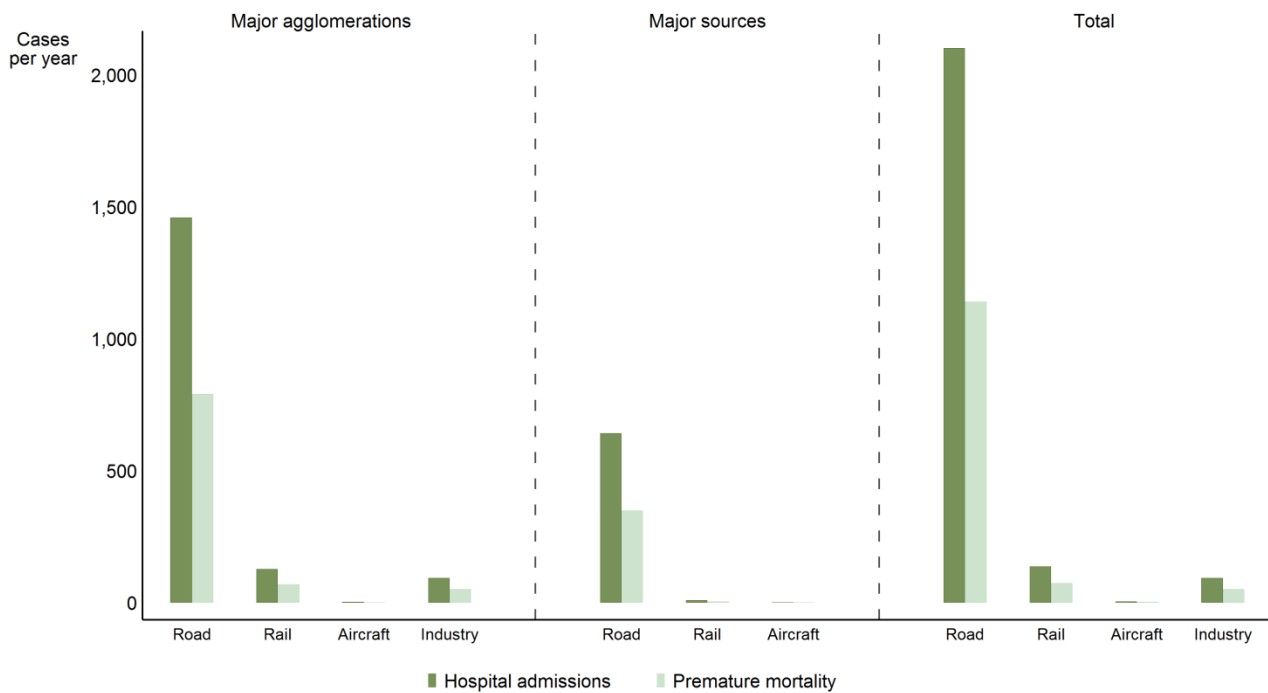
Health impact assessment

Annoyance and sleep disturbance



RD 0210216

Hospital admissions and mortality



RD 0210216

Trends on noise exposure 2007 - 2012

Trends on noise exposure are shown only in those cases where data is available for both implementation rounds:

- For major airports: total number of people exposed to more than 55 dB Lden and to more than 50 dB Lnight outside agglomerations.
- For agglomerations: percentage of population exposed to more than 55 dB Lden and to more than 50 dB Lnight due to different noise sources.

Major airports:

	L _{den}		L _{night}	
	First Round	Second Round	First Round	Second Round
Bucharest Henri Coandă International Airport	3000	6500	5400	200

Agglomerations:

Air (values in %)	L _{den}		L _{night}	
	First Round	Second Round	First Round	Second Round
Bucharest (*)	1	0	1	2
Cluj-Napoca	0	0	1	0
Craiova (*)	0	0	0	0
Iasi (*)	0	0	0	0

Industry (values in %)	L _{den}		L _{night}	
	First Round	Second Round	First Round	Second Round
Brasov (*)	9	1	4	0
Bucharest (*)	0	13	0	4
Cluj-Napoca	0	0	0	0
Craiova (*)	1	0	1	0
Galati (*)	0	0	0	0
Iasi (*)	7	0	2	0
Ploiesti (*)	3	3	2	0
Timisoara	0	0	0	0

	Decrease in population exposed
	No change
	Increase in population exposed

Railway (values in %)	L _{den}		L _{night}	
	First Round	Second Round	First Round	Second Round
Brasov (*)	3	5	3	4
Bucharest(*)	6	11	5	11
Cluj-Napoca	3	4	2	1
Craiova (*)	4	10	3	8
Galati (*)	4	0	2	1
Iasi (*)	9	6	9	2
Ploiesti (*)	11	4	9	2
Timisoara	3	0	2	0

Road (values in %)	L _{den}		L _{night}	
	First Round	Second Round	First Round	Second Round
Brasov (*)	61	26	46	16
Bucharest (*)	85	54	66	50
Cluj-Napoca	64	16	34	12
Craiova (*)	36	87	11	70
Galati (*)	55	44	36	25
Iasi (*)	16	76	11	68
Ploiesti (*)	61	80	37	64
Timisoara	49	21	42	15

(*) Increase of the number of inhabitants bigger than 10% between 2005 and 2010

For further information about environmental noise in Europe please consult <http://www.eea.europa.eu/themes/human/noise> or visit the Noise Observation & Information Service for Europe at <http://noise.eionet.europa.eu/> and EEA Data Service <http://www.eea.europa.eu/data-and-maps/data/data-on-noise-exposure-2>.