



The Environmental Noise Directive (END) requires EU member states to assess exposure to noise from key transport and industrial sources with two initial reporting phases: 2007 and 2012. Where the recommended thresholds for day and night indicators are exceeded, action plans are to be implemented. This country fiche presents data related to END assessments as reported to EEA by 15<sup>th</sup> April 2016 for the two key END indicators:  $L_{den}$  (day evening and night exposure) and  $L_{night}$  (night time exposure). 2012 strategic noise maps reported are presented, as well as HIA calculations for annoyance and sleep disturbance, hospital admissions and mortality. Trends are presented as the change in exposure from 2007 to 2012, for comparable sources only.

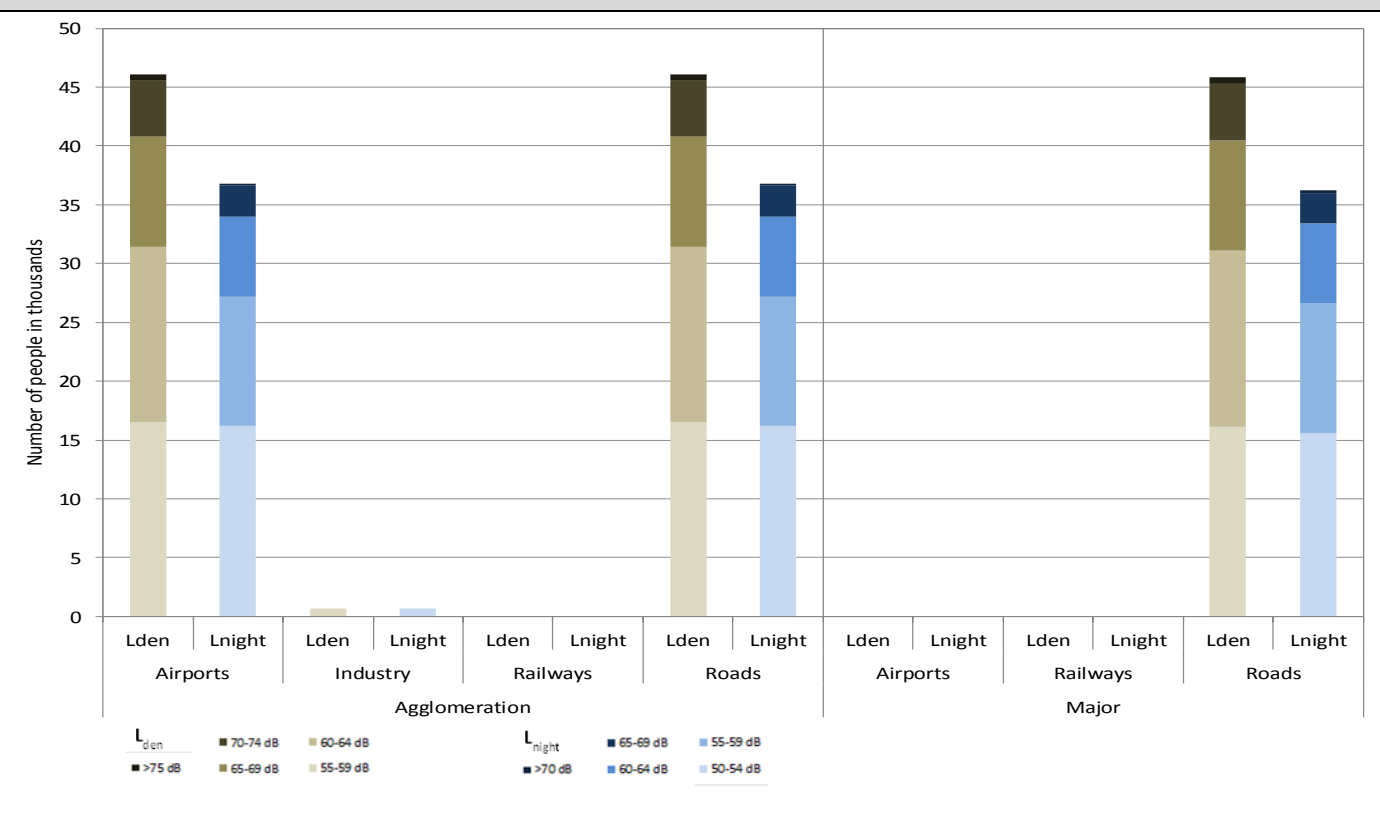


## ICELAND

### Noise sources covered by this assessment

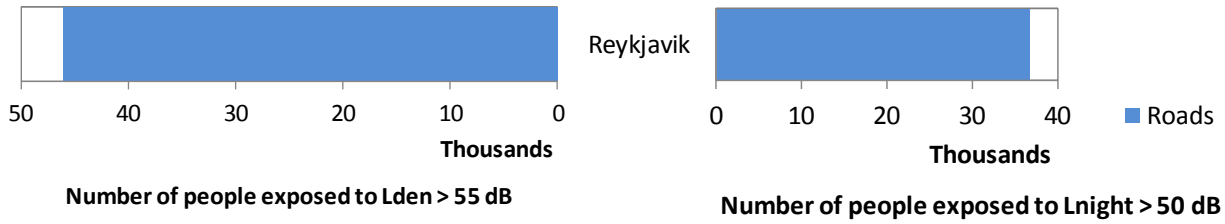
<b>Agglomerations</b> > 100.000 inhabitants	Reykjavík  1 agglomeration in total, covering 192.000 inhabitants
<b>Major airports</b> > 50.000 movements per year	No Major Airports > 50 000 mov/year
<b>Major roads</b> > 3 million vehicles per year	64 km in total
<b>Major railways</b> > 30.000 train passages per year	No Major Railways > 30 000 trains/year

### Number of people exposed to different noise bands per $L_{den}$ and $L_{night}$ (2012)

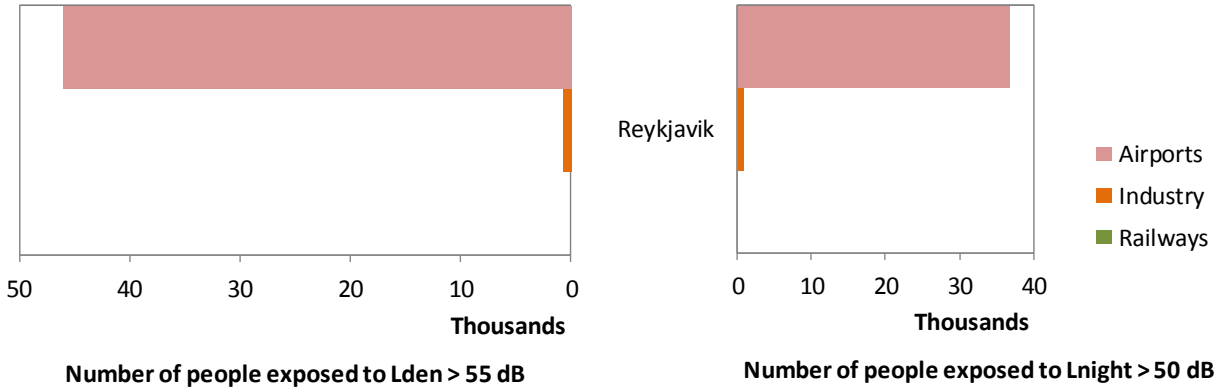


Data not provided in 1 agglomeration for railway noise, out of 1 agglomeration.

**Total number of people exposed to road noise inside agglomerations (2012)**



**Total number of people exposed to railway, aircraft and industrial noise inside agglomerations (2012)**



**Total number of people exposed to Major Airports outside agglomerations (2012)**

No Major Airports > 50 000 mov/year

**Noise contour maps (2012)**

**Major roads**

No contour maps delivered in spatial format

**Major railways**

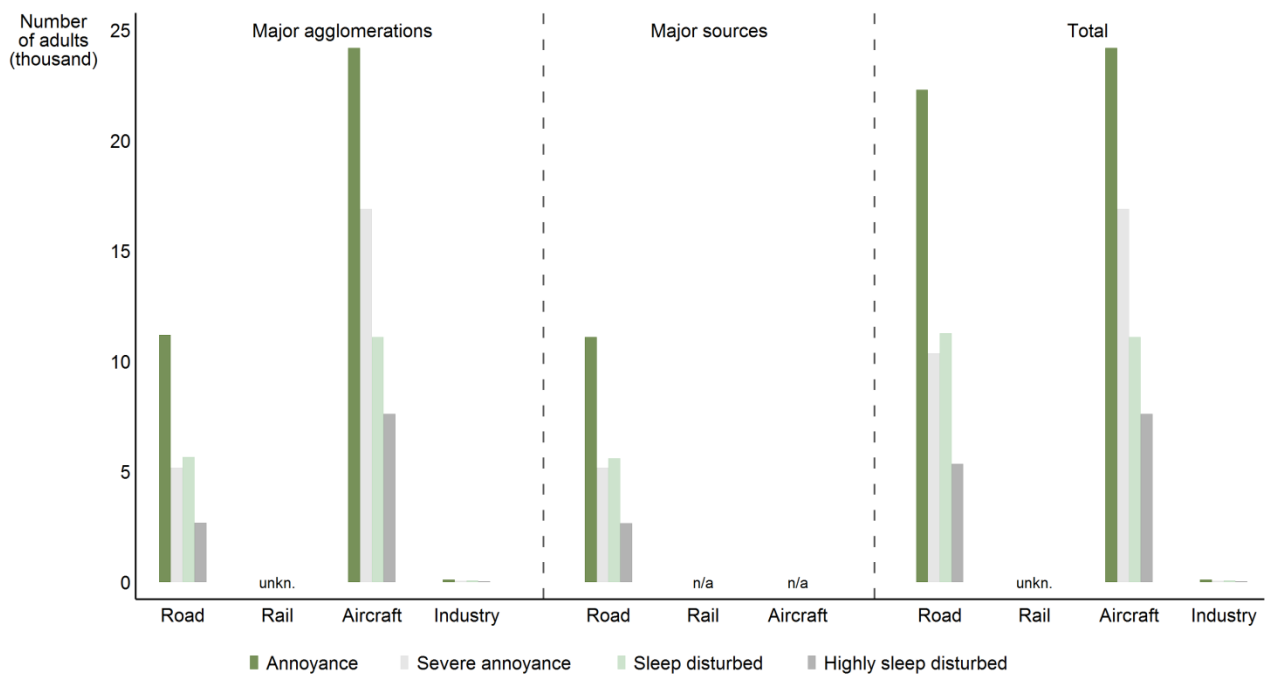
No Major Railways > 30 000 trains/year

**Major airports**

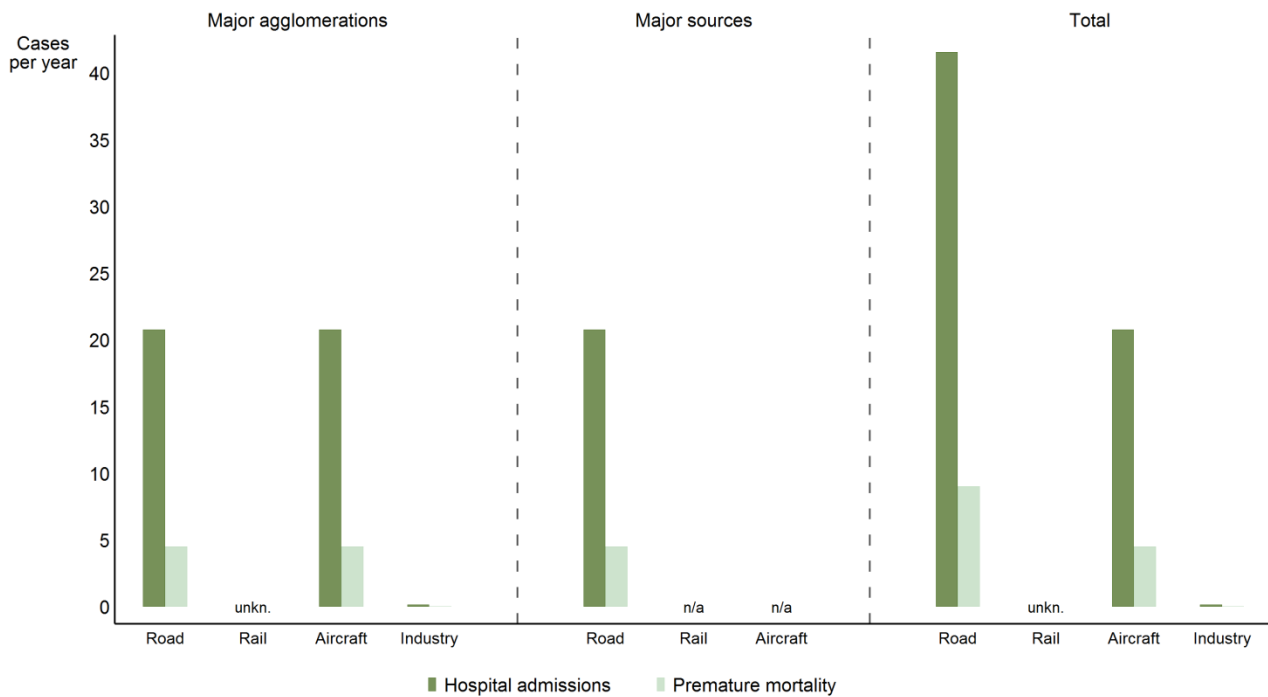
No Major Airports > 50 000 mov/year

## Health impact assessment

### Annoyance and sleep disturbance



### Hospital admissions and mortality



## Trends on noise exposure 2007 - 2012

Trends on noise exposure are shown only in those cases where data is available for both implementation rounds:

- For major airports: total number of people exposed to more than 55 dB Lden and to more than 50 dB Lnight outside agglomerations.
- For agglomerations: percentage of population exposed to more than 55 dB Lden and to more than 50 dB Lnight due to different noise sources.


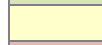

### Major airports:

	L <sub>den</sub>		L <sub>night</sub>	
	First Round	Second Round	First Round	Second Round
No Major Airports > 50 000 mov/year				

### Agglomerations:

Air (values in %)	L <sub>den</sub>		L <sub>night</sub>	
	First Round	Second Round	First Round	Second Round
No agglomeration >=250 000 inhabitants				

Industry (values in %)	L <sub>den</sub>		L <sub>night</sub>	
	First Round	Second Round	First Round	Second Round
No agglomeration >=250 000 inhabitants				

	Decrease in population exposed
	No change
	Increase in population exposed

Railway (values in %)	L <sub>den</sub>		L <sub>night</sub>	
	First Round	Second Round	First Round	Second Round
No agglomeration >=250 000 inhabitants				

Road (values in %)	L <sub>den</sub>		L <sub>night</sub>	
	First Round	Second Round	First Round	Second Round
No agglomeration >=250 000 inhabitants				

For further information about environmental noise in Europe please consult <http://www.eea.europa.eu/themes/human/noise> or visit the Noise Observation & Information Service for Europe at <http://noise.eionet.europa.eu/> and EEA Data Service <http://www.eea.europa.eu/data-and-maps/data/data-on-noise-exposure-2>.