

The Environmental Noise Directive (END) requires EU Member States to assess exposure to noise from key transport and industrial sources with two initial reporting phases: 2007 and 2012. Where the recommended thresholds for day and night indicators are exceeded, action plans are to be implemented. This country fact sheet presents key statistics related to END assessments as reported to EEA by 30th June 2015 for the two key END indicators: L_{den} (day evening and night exposure) and L_{night} (night time exposure). Where possible this is presented for second round assessments reported in 2012. Trends are presented as the change in exposure from 2007 to 2012, for comparable sources only.



NETHERLANDS

Noise sources covered by this assessment		Trends on noise exposure 2007 - 2012																																																																																																							
	END noise sources	Trends on noise exposure show, for both implementation rounds:																																																																																																							
Number of agglomerations	21	<ul style="list-style-type: none"> - For agglomerations: the relative value of people exposed to more than 55 dB L_{den} and to more than 50 dB L_{night} due to different noise sources (values are expressed in %). - For major airports: total number of people exposed to more than 55 dB L_{den} and to more than 50 dB L_{night} (values are expressed in real numbers). 																																																																																																							
Major roads	3181 km																																																																																																								
Major railways*	854 km																																																																																																								
Number of major airports	1																																																																																																								
Name of major airports	Amsterdam Airport Schiphol	<p>Major airports:</p> <table border="1"> <thead> <tr> <th rowspan="2"></th> <th colspan="2">L_{den}</th> <th colspan="2">L_{night}</th> </tr> <tr> <th>First round</th> <th>Second round</th> <th>First round</th> <th>Second round</th> </tr> </thead> <tbody> <tr> <td>Amsterdam Schiphol Airport</td> <td>1000</td> <td>52500</td> <td>0</td> <td>1900</td> </tr> </tbody> </table>					L_{den}		L_{night}		First round	Second round	First round	Second round	Amsterdam Schiphol Airport	1000	52500	0	1900																																																																																						
	L_{den}		L_{night}																																																																																																						
	First round	Second round	First round	Second round																																																																																																					
Amsterdam Schiphol Airport	1000	52500	0	1900																																																																																																					
Name of agglomerations and number of inhabitants	<table border="1"> <tbody> <tr><td>Alkmaar</td><td>226366</td></tr> <tr><td>Almere</td><td>190655</td></tr> <tr><td>Amersfoort</td><td>146592</td></tr> <tr><td>Amsterdam</td><td>1615331</td></tr> <tr><td>Apeldoorn</td><td>156199</td></tr> <tr><td>Arnhem</td><td>148070</td></tr> <tr><td>Breda</td><td>174599</td></tr> <tr><td>Eindhoven</td><td>437629</td></tr> <tr><td>Enschede</td><td>311184</td></tr> <tr><td>Gouda</td><td>184109</td></tr> <tr><td>Groningen</td><td>189991</td></tr> <tr><td>Heerlen</td><td>232441</td></tr> <tr><td>Hilversum</td><td>214669</td></tr> <tr><td>Maastricht</td><td>119664</td></tr> <tr><td>Nijmegen</td><td>164223</td></tr> <tr><td>Rotterdam</td><td>1290840</td></tr> <tr><td>s Hertogenbosch</td><td>140786</td></tr> <tr><td>The Hague</td><td>1279669</td></tr> <tr><td>Tilburg</td><td>206240</td></tr> <tr><td>Utrecht</td><td>517647</td></tr> <tr><td>Zwolle</td><td>120355</td></tr> </tbody> </table>	Alkmaar	226366	Almere	190655	Amersfoort	146592	Amsterdam	1615331	Apeldoorn	156199	Arnhem	148070	Breda	174599	Eindhoven	437629	Enschede	311184	Gouda	184109	Groningen	189991	Heerlen	232441	Hilversum	214669	Maastricht	119664	Nijmegen	164223	Rotterdam	1290840	s Hertogenbosch	140786	The Hague	1279669	Tilburg	206240	Utrecht	517647	Zwolle	120355	<p>Agglomerations:</p> <table border="1"> <thead> <tr> <th rowspan="2">Airports (values in %)</th> <th colspan="2">L_{den}</th> <th colspan="2">L_{night}</th> </tr> <tr> <th>First round</th> <th>Second round</th> <th>First round</th> <th>Second round</th> </tr> </thead> <tbody> <tr><td>Amsterdam</td><td>4</td><td>0</td><td>1</td><td>0</td></tr> <tr><td>Eindhoven</td><td>0</td><td>0</td><td>0</td><td>0</td></tr> <tr><td>Heerlen</td><td>0</td><td>0</td><td>0</td><td>0</td></tr> <tr><td>Rotterdam</td><td>0</td><td>0</td><td>0</td><td>0</td></tr> <tr><td>The Hague</td><td>0</td><td>0</td><td>0</td><td>0</td></tr> <tr><td>Utrecht</td><td>0</td><td>0</td><td>0</td><td>0</td></tr> </tbody> </table> <table border="1"> <thead> <tr> <th rowspan="2">Industry (values in %)</th> <th colspan="2">L_{den}</th> <th colspan="2">L_{night}</th> </tr> <tr> <th>First round</th> <th>Second round</th> <th>First round</th> <th>Second round</th> </tr> </thead> <tbody> <tr><td>Amsterdam</td><td>1</td><td>1</td><td>0</td><td>0</td></tr> <tr><td>Eindhoven</td><td>1</td><td>1</td><td>0</td><td>0</td></tr> </tbody> </table>				Airports (values in %)	L_{den}		L_{night}		First round	Second round	First round	Second round	Amsterdam	4	0	1	0	Eindhoven	0	0	0	0	Heerlen	0	0	0	0	Rotterdam	0	0	0	0	The Hague	0	0	0	0	Utrecht	0	0	0	0	Industry (values in %)	L_{den}		L_{night}		First round	Second round	First round	Second round	Amsterdam	1	1	0	0	Eindhoven	1	1	0	0
Alkmaar	226366																																																																																																								
Almere	190655																																																																																																								
Amersfoort	146592																																																																																																								
Amsterdam	1615331																																																																																																								
Apeldoorn	156199																																																																																																								
Arnhem	148070																																																																																																								
Breda	174599																																																																																																								
Eindhoven	437629																																																																																																								
Enschede	311184																																																																																																								
Gouda	184109																																																																																																								
Groningen	189991																																																																																																								
Heerlen	232441																																																																																																								
Hilversum	214669																																																																																																								
Maastricht	119664																																																																																																								
Nijmegen	164223																																																																																																								
Rotterdam	1290840																																																																																																								
s Hertogenbosch	140786																																																																																																								
The Hague	1279669																																																																																																								
Tilburg	206240																																																																																																								
Utrecht	517647																																																																																																								
Zwolle	120355																																																																																																								
Airports (values in %)	L_{den}		L_{night}																																																																																																						
	First round	Second round	First round	Second round																																																																																																					
Amsterdam	4	0	1	0																																																																																																					
Eindhoven	0	0	0	0																																																																																																					
Heerlen	0	0	0	0																																																																																																					
Rotterdam	0	0	0	0																																																																																																					
The Hague	0	0	0	0																																																																																																					
Utrecht	0	0	0	0																																																																																																					
Industry (values in %)	L_{den}		L_{night}																																																																																																						
	First round	Second round	First round	Second round																																																																																																					
Amsterdam	1	1	0	0																																																																																																					
Eindhoven	1	1	0	0																																																																																																					

*Length 2005: includes only major railways > 60.000 train passages/year

Heerlen	0	0	0	0
Rotterdam	5	2	1	0
The Hague	1	1	0	0
Utrecht	0	0	0	0

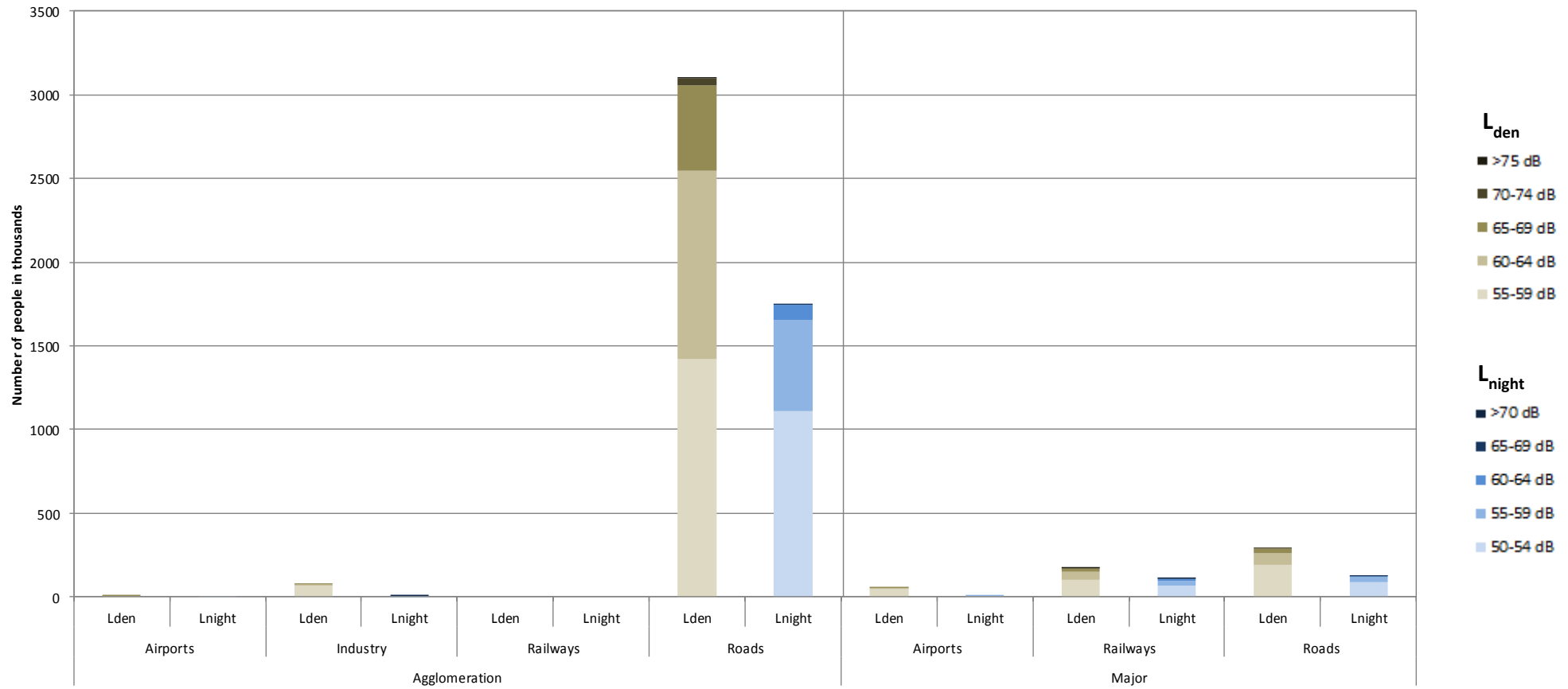
Railways (values in %)	L _{den}		L _{night}	
	First round	Second round	First round	Second round
Amsterdam	5	0	3	0
Eindhoven	5	0	8	0
Heerlen	1	0	1	0
Rotterdam	4	0	2	0
The Hague	3	0	2	0
Utrecht	9	0	5	0

Roads (values in %)	L _{den}		L _{night}	
	First round	Second round	First round	Second round
Amsterdam	35	41	20	24
Eindhoven	29	46	13	26
Heerlen	36	35	19	18
Rotterdam	38	44	23	28
The Hague	43	39	24	22
Utrecht	42	45	23	24

N/D: Data not provided or unsuitable for deriving trends (e.g. data reported for only one round)

	Decrease in population exposed
	No change
	Increase in population exposed

Number of people exposed to different noise bands per L_{den} and L_{night} (2012)

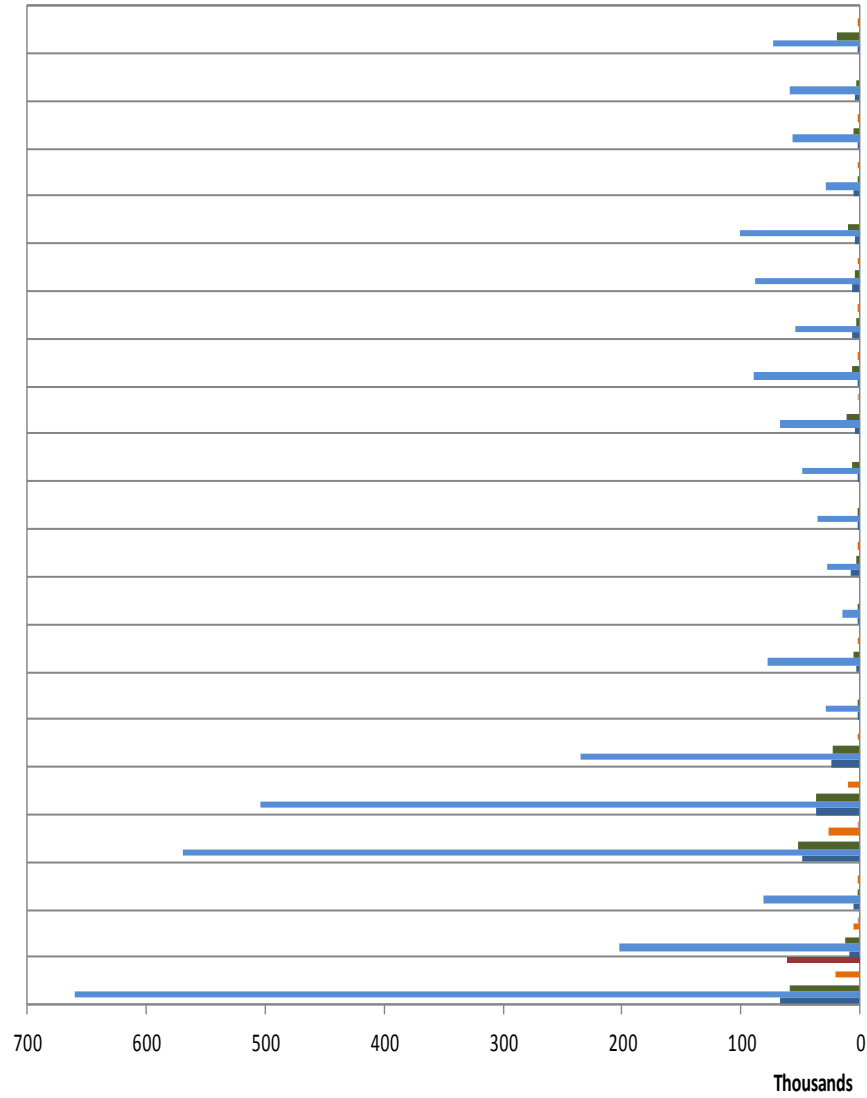


Data relating to END mandatory noise contour maps (2012)

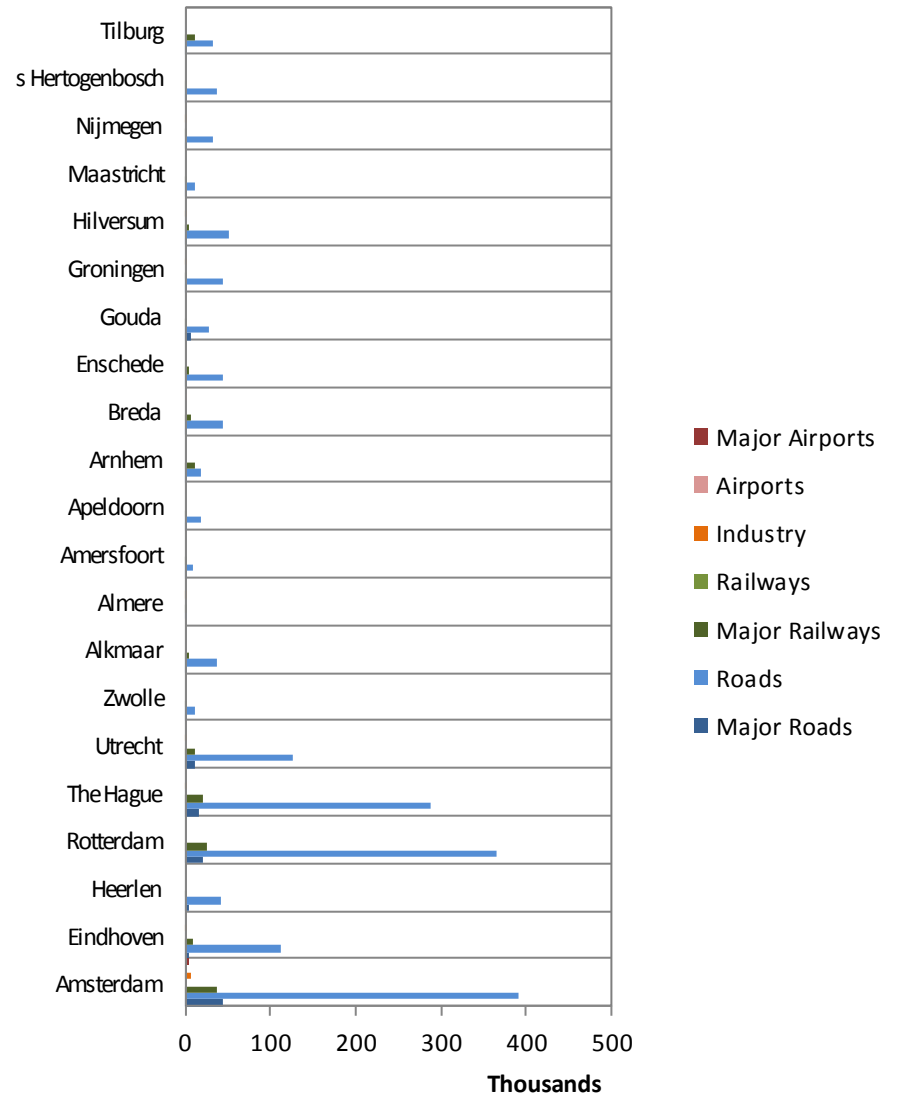
	Major roads	Major railways	Major airports
Country area (km ²)	34951.26	34951.26	34951.26
Km of noise sources	N/D	854.00	N/A
Area of contour map in the 55-65 dB L _{den} band (in km ²)	N/D	N/D	N/D
Share of area of contour map in the 55-65 dB L _{den} band per km of noise source reported	N/D	N/D	N/D
Percentage of the country area occupied by contour maps in the 55-65 dB L _{den} band (in %)	N/D	N/D	N/D
Area of contour map with more than 65 dB L _{den} (in km ²)	N/D	N/D	N/D
Share of area of contour map with more than 65 dB L _{den} per km of noise source reported	N/D	N/D	N/D
Percentage of the country area occupied by contour maps with more than 65 dB L _{den} (in %)	N/D	N/D	N/D

*N/A: Not applicable. N/D: No data in suitable format to perform the spatial analysis

Total number of people exposed to noise inside agglomerations (2012)



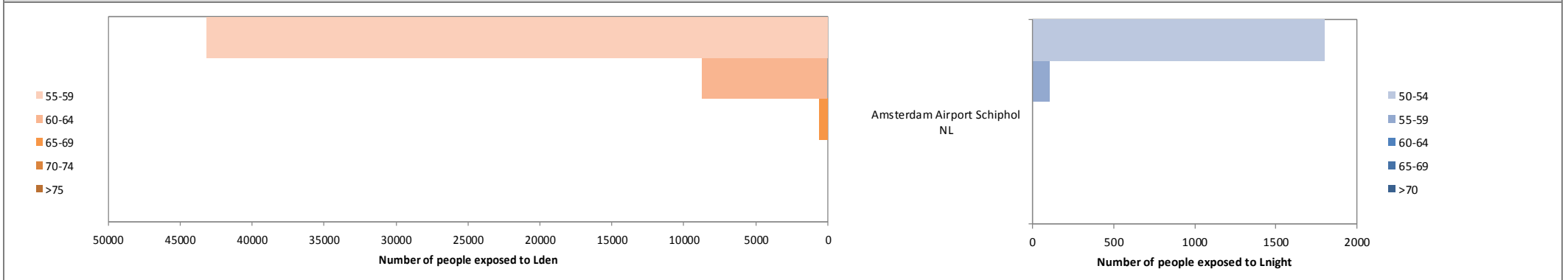
Number of people exposed to Lden > 55 dB



Number of people exposed to Lnight > 50 dB

- Major Airports
- Airports
- Industry
- Railways
- Major Railways
- Roads
- Major Roads

Total number of people exposed to noise from major airports outside agglomerations (2012)



For further information please consult the full Noise in Europe report at www.eea.europa.eu/themes/noise or visit the Noise Observation & Information Service for Europe at <http://noise.eionet.europa.eu/>.