

The Environmental Noise Directive (END) requires EU Member States to assess exposure to noise from key transport and industrial sources with two initial reporting phases: 2007 and 2012. Where the recommended thresholds for day and night indicators are exceeded, action plans are to be implemented. This country fact sheet presents key statistics related to END assessments as reported to EEA by 30th June 2015 for the two key END indicators: L_{den} (day evening and night exposure) and L_{night} (night time exposure). Where possible this is presented for second round assessments reported in 2012. Trends are presented as the change in exposure from 2007 to 2012, for comparable sources only.



FINLAND

Noise sources covered by this assessment

	END noise sources
Number of agglomerations	8
Major roads	2243 km
Major railways	230 km
Number of major airports	3
Name of major airports	Helsinki Vantaa Airport Helsinki-Malmi Airport Turku Airport
Name of agglomerations and number of inhabitants	Espoo 241015 Helsinki 570578 Kauniainen 8500 Lahti 100000 Oulu 131585 Tampere 207866 Turku 175286 Vantaa 192522

Trends on noise exposure 2007 - 2012

Trends on noise exposure show, for both implementation rounds:

- For agglomerations: the relative value of people exposed to more than 55 dB L_{den} and to more than 50 dB L_{night} due to different noise sources (values are expressed in %).
- For major airports: total number of people exposed to more than 55 dB L_{den} and to more than 50 dB L_{night} (values are expressed in real numbers).

Major airports:

	L_{den}		L_{night}	
	First round	Second round	First round	Second round
Helsinki Vantaa Airport	10200	14000	2900	3700

Agglomerations:


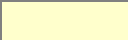

Airports (values in %)	L_{den}		L_{night}	
	First round	Second round	First round	Second round
Helsinki	0.1	0.1	0.0	0.0

Industry (values in %)	L_{den}		L_{night}	
	First round	Second round	First round	Second round
Helsinki	0	0	0	0

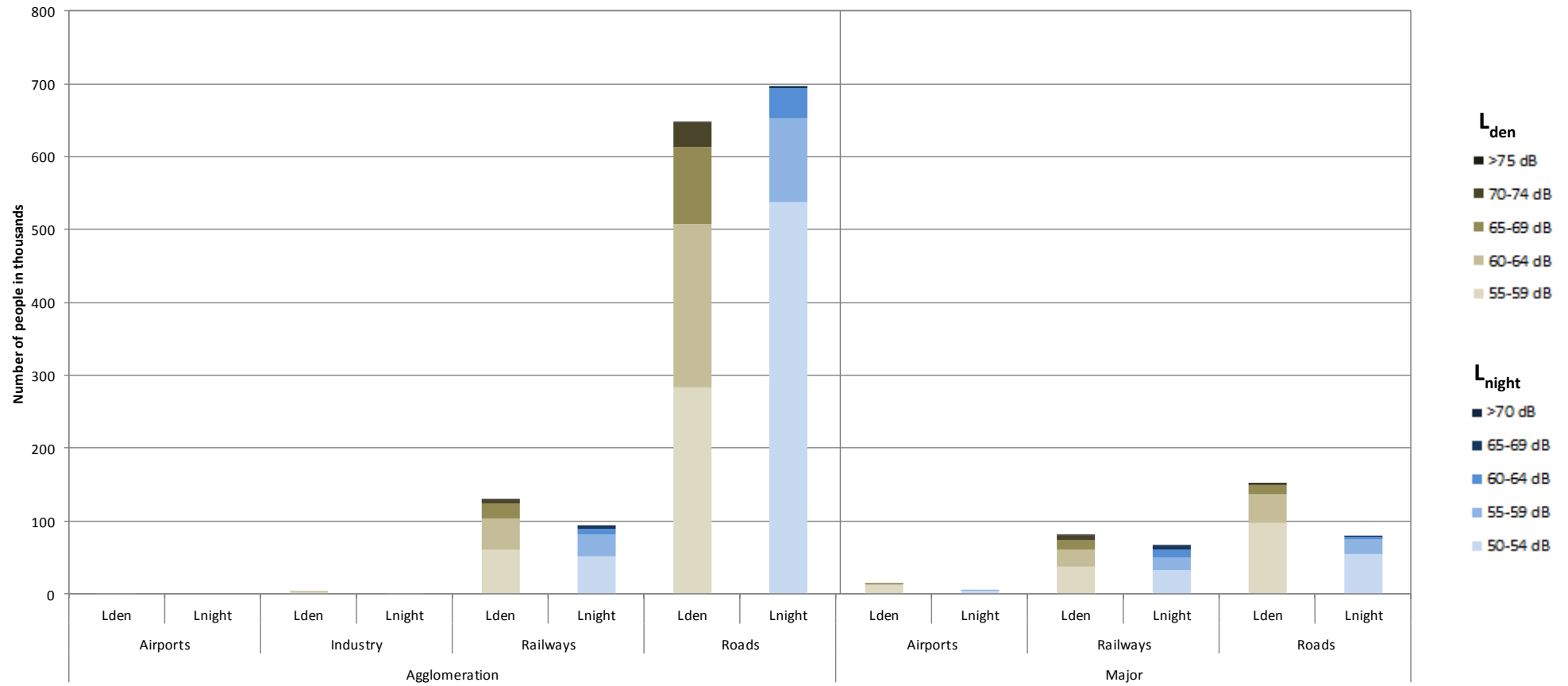
Railways (values in %)	L _{den}		L _{night}	
	First round	Second round	First round	Second round
Helsinki	12.4	12.9	9.1	9.5

Roads (values in %)	L _{den}		L _{night}	
	First round	Second round	First round	Second round
Helsinki	42	49	29	32

N/D: Data not provided or unsuitable for deriving trends (e.g. data reported for only one round)

	Decrease in population exposed
	No change
	Increase in population exposed

Number of people exposed to different noise bands per L_{den} and L_{night} (2012)



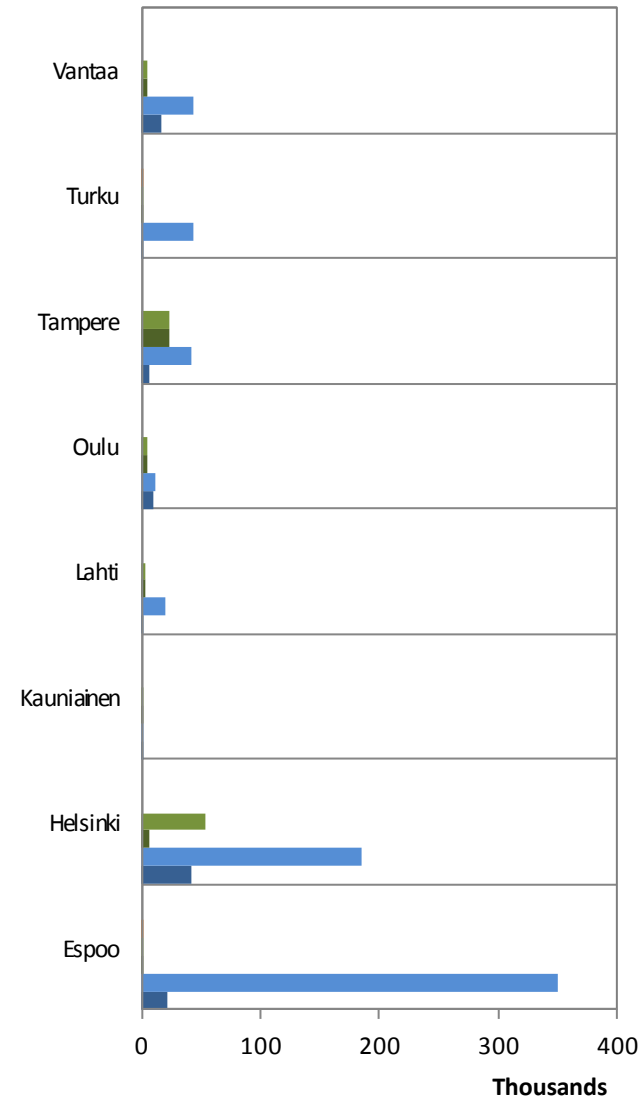
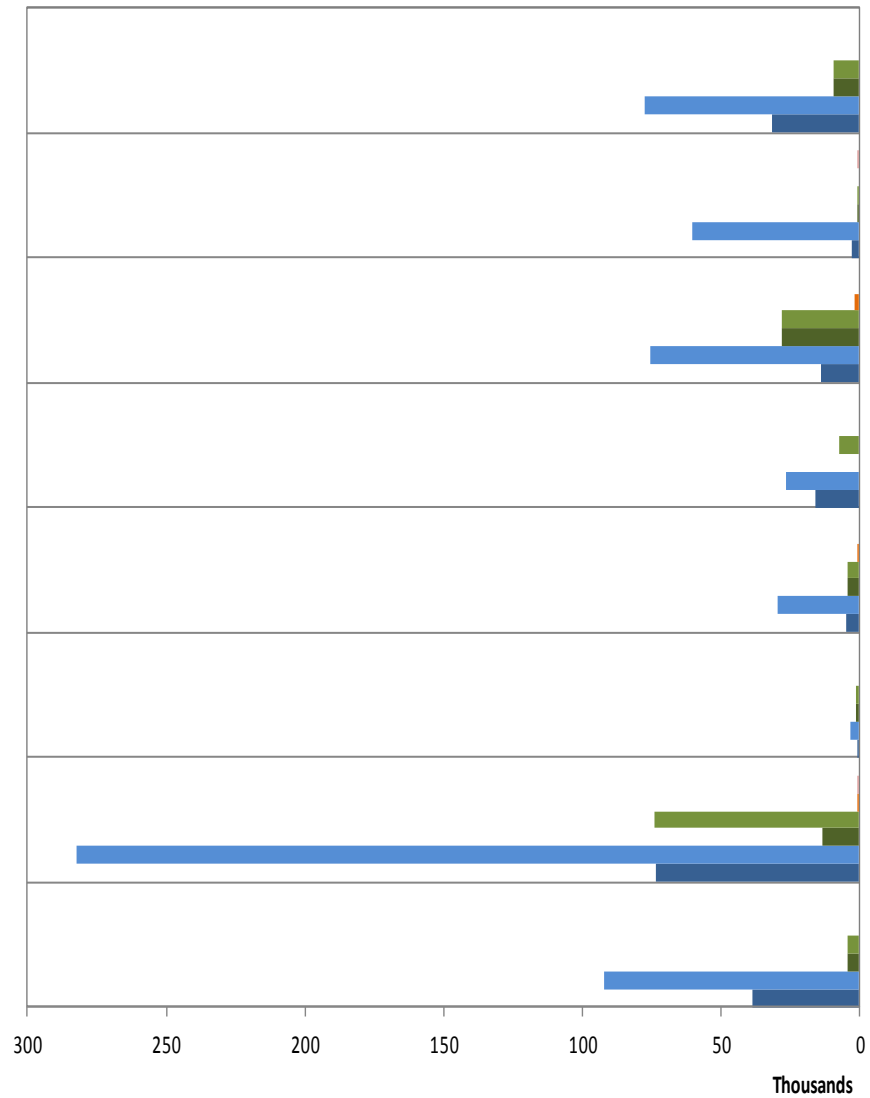
Data not applicable in 6 agglomerations for aircraft noise.

Data relating to END mandatory noise contour maps (2012)

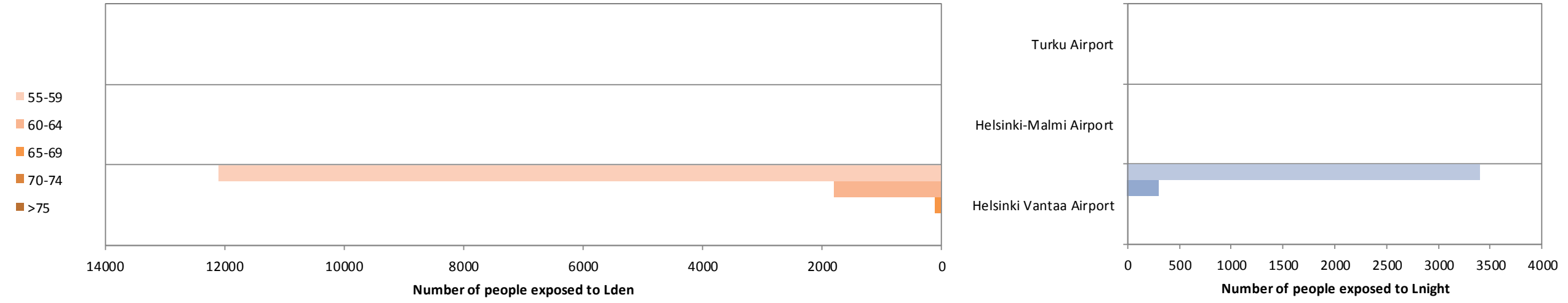
	Major roads	Major railways	Major airports
Country area (km ²)	335280.28	335280.28	335280.28
Km of noise sources	2243.00	229.70	N/A
Area of contour map in the 55-65 dB L _{den} band (in km ²)	800.58	192.24	159.95
Share of area of contour map in the 55-65 dB L _{den} band per km of noise source reported	0.36	0.84	N/A
Percentage of the country area occupied by contour maps in the 55-65 dB L _{den} band (in %)	0.24	0.06	0.04
Area of contour map with more than 65 dB L _{den} (in km ²)	293.01	71.68	9.41
Share of area of contour map with more than 65 dB L _{den} per km of noise source reported	0.13	0.31	N/A
Percentage of the country area occupied by contour maps with more than 65 dB L _{den} (in %)	0.09	0.02	0.00

*N/A: Not applicable. N/D: No data in suitable format to perform the spatial analysis

Total number of people exposed inside agglomerations (2012)



Total number of people exposed to Major Airports outside agglomerations (2012)



For further information please consult the full Noise in Europe report at www.eea.europa.eu/themes/noise or visit the Noise Observation & Information Service for Europe at <http://noise.eionet.europa.eu/>.