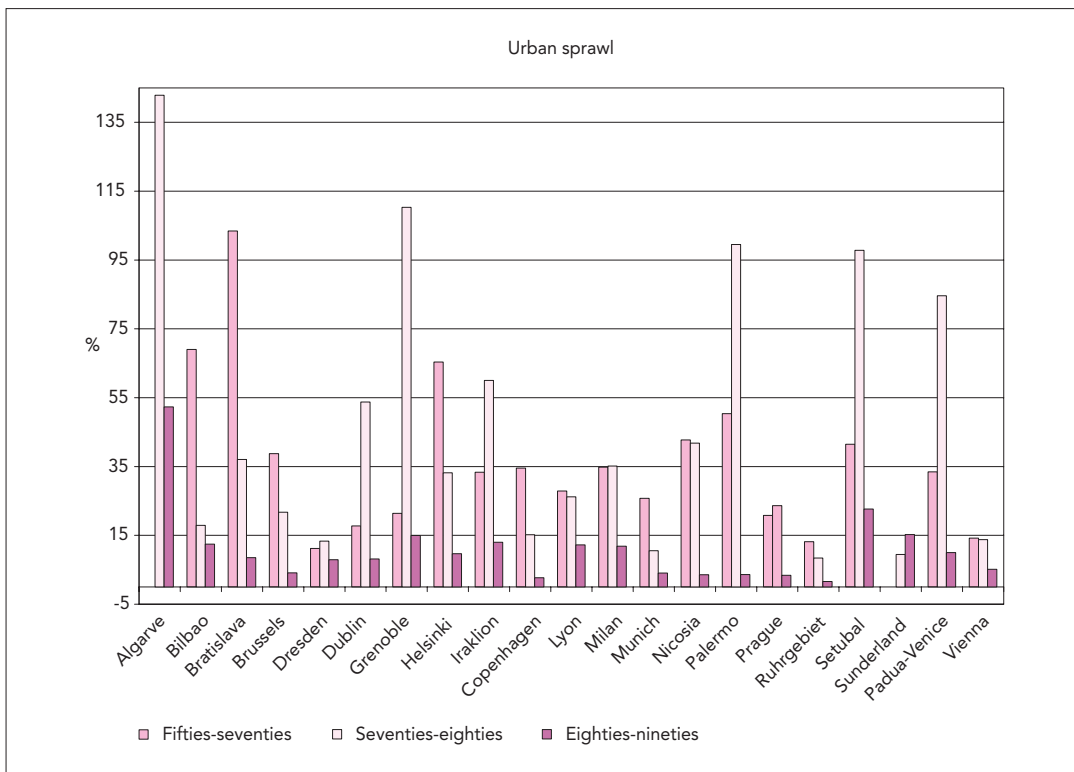


The phenomenon of sprawl is dramatically common to all the areas studied.

Figure 5.8



Urban sprawl during a 40-year period

Figure 5.9

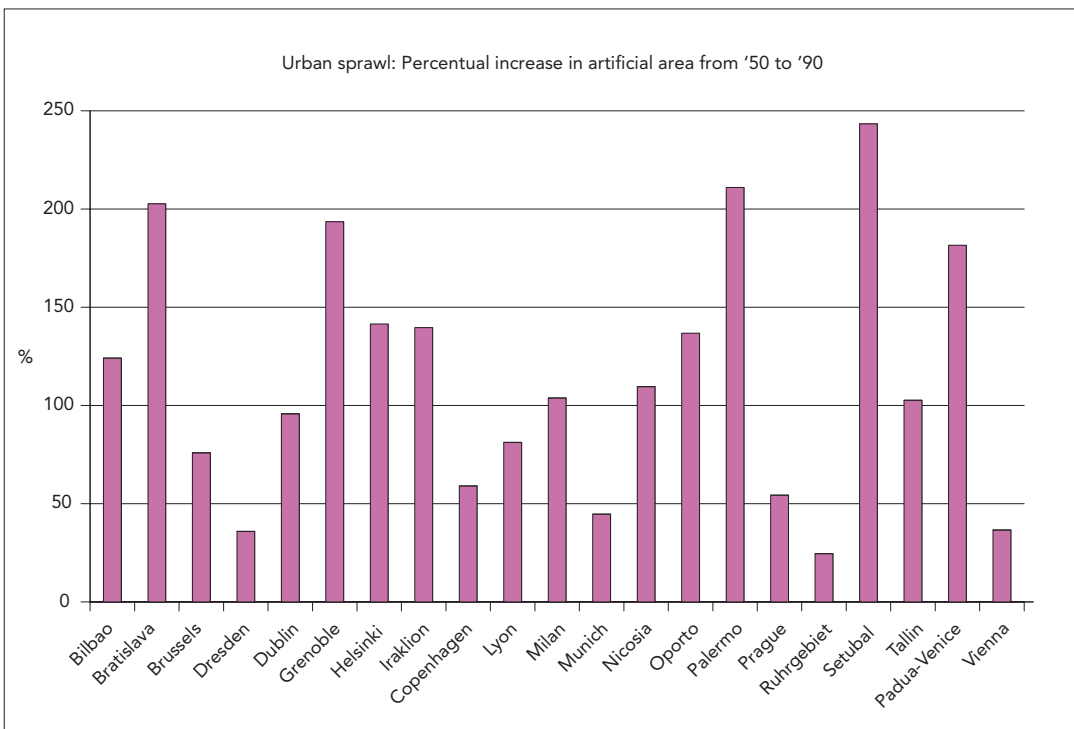


Figure 5.10

Percentage of natural and agricultural land lost to urbanisation from the 1950s to 1990s. The loss in natural and agricultural areas due to city sprawl shows unsustainable trends for most of the cities investigated.

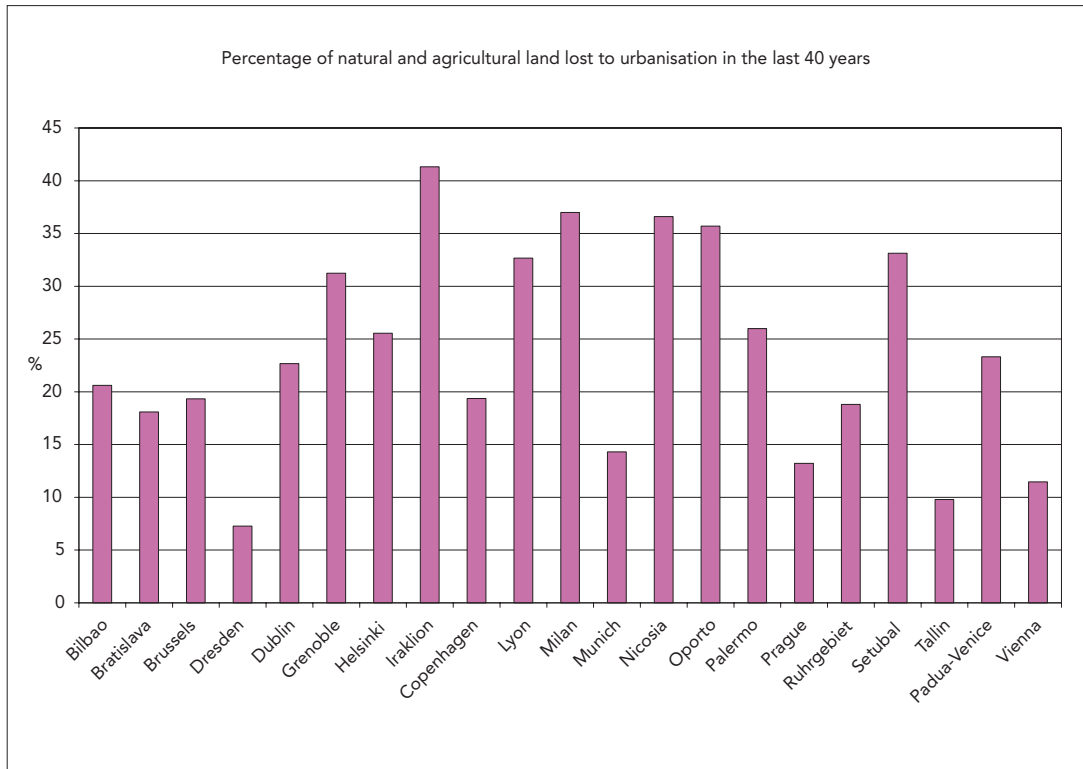
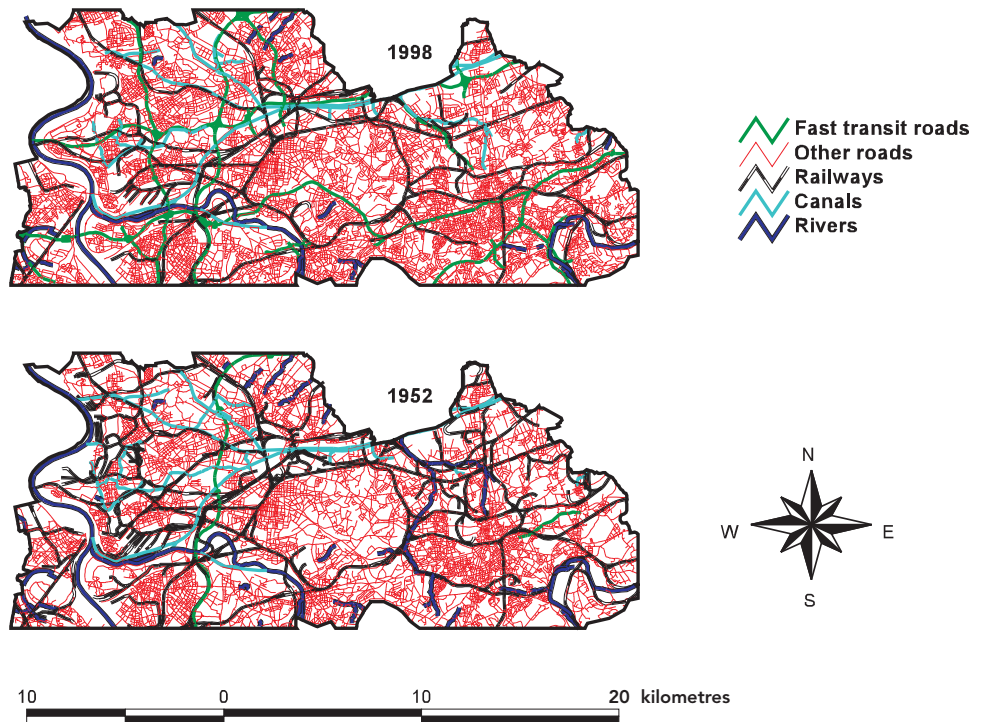


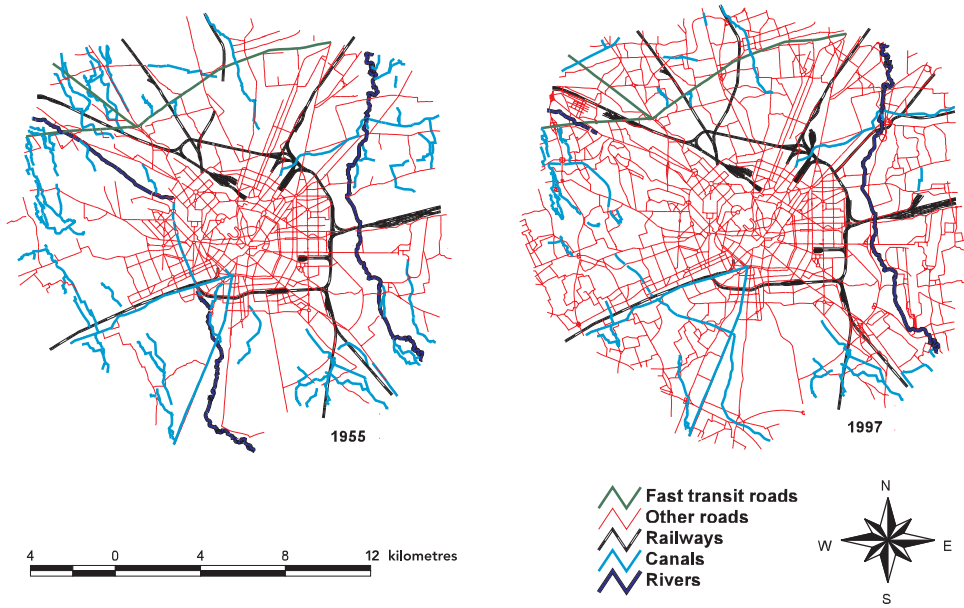
Figure 5.11

Overall transport system evolution in the Ruhrgebiet area (Germany) from 1952 to 1998, including railways (black colour) and motorways (green colours)



Transport network evolution in Milan (Italy) from 1955 to 1997.  
Blue lines are canals and rivers; many of them were covered during the city development.

Figure 5.12



Transport network development in selected areas from the 1950s to the 1990s

Figure 5.13

