

The way forward – Tools for supporting Member States in their monitoring efforts

© Anji Yordanova, REDISCOVER Nature/EEA

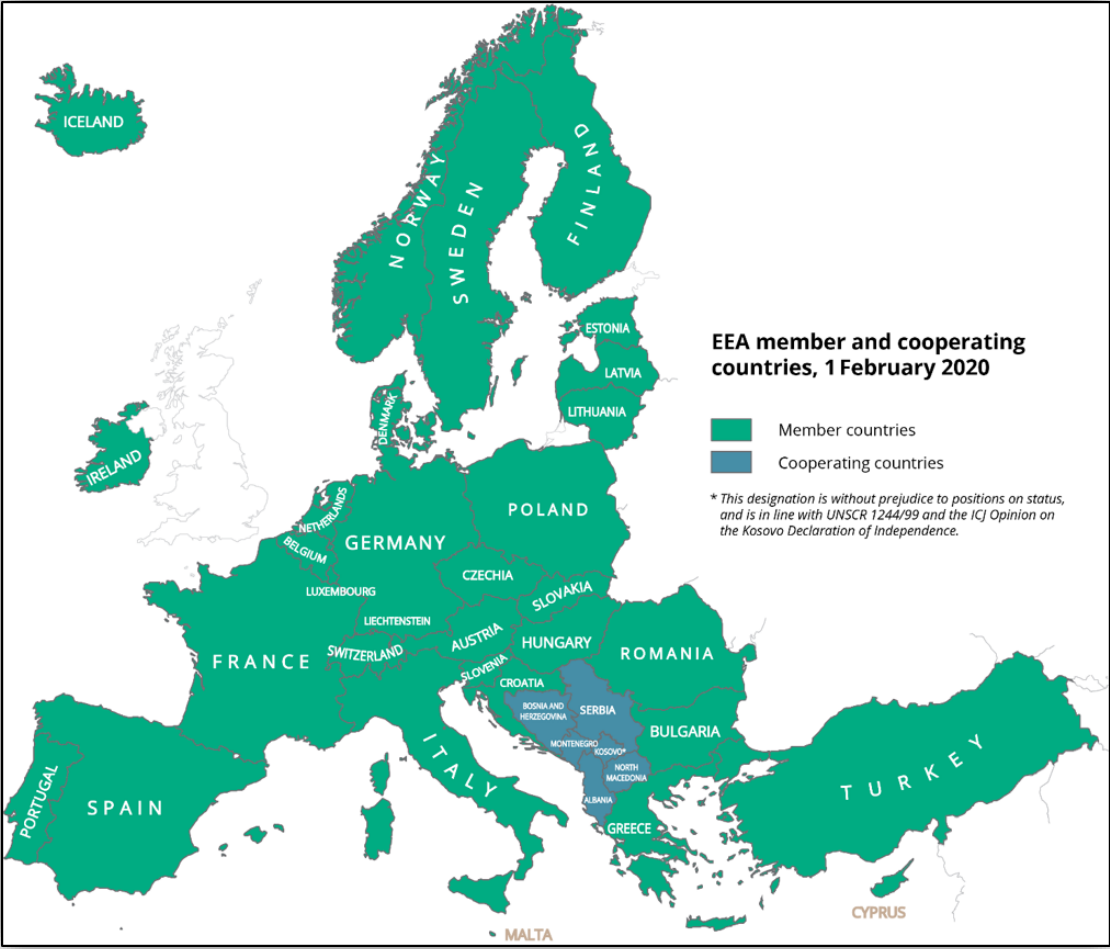
John van Aardenne, Lucia Perugini, Tobias Langanke
/ Workshop: LULUCF: enhancing climate policy implementation / 18-19 December 2023

About the European Environment Agency (EEA)

An agency of the European Union that delivers knowledge and data to support Europe's environment and climate goals.



integration of knowledge, data, policy and stakeholder insights
co-benefit and trade-off analysis (Copernicus Land Monitoring, Forest Monitoring, Soil Monitoring, LULUCF, Nature restoration



EEA supporting the implementation of the LULUCF regulation



Quality checks of MS GHG inventories and compilation of the EU GHG inventory

Support implementing LULUCF regulation by comprehensive reviews, compliance check and progress to targets

Facilitate improved and annual geographic tracking of greenhouse gas emissions and carbon removals

Support MS with the gradual improvement of GHG inventories through methodological guidance, facilitating access to inventory activity data and emissions factors, expert training and facilitating good practice exchanges between inventory compilers.

Performance of assessments on options to increase (land based) carbon removals that do not lead to significant negative consequences on the environment.

We are building the team and aim to help you

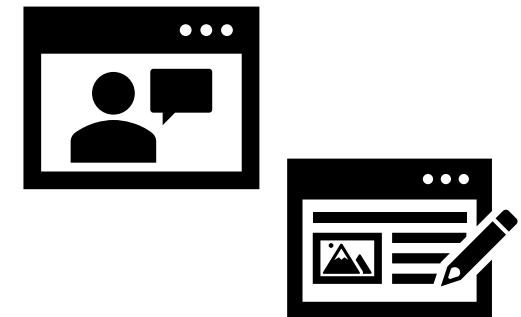


The way forward – LULUCF handbook your new best friend?

We are committed to keep the LULUCF handbook up to date, give it an online presence and are looking into setting up an online support function so that technical experts can exchange practice and information.



v1 (2023)

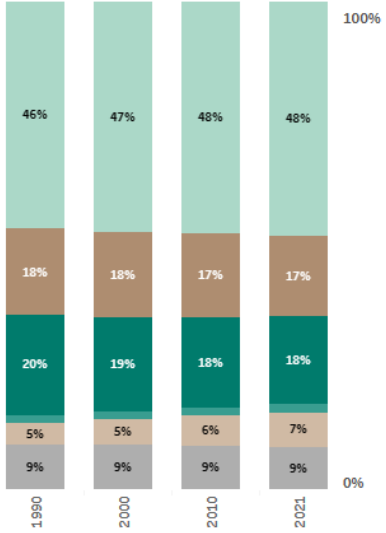
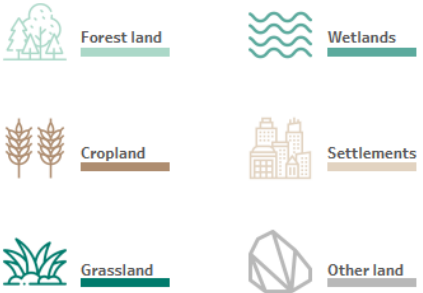


(future)
online handbook, technical
guidance, online support,
e-learning

The way forward – make use of existing procedures and tools

Share of land use over time

This graph shows the development of the area shares of the different land use categories, where 100% is the country's total area. Hover over the icons in the legend to see the descriptions of the different categories. Click on the icons to highlight the corresponding sections in the bar chart. When using the land use categories, countries can use national definitions to better match their national systems for each category. This means there can be some difference in how the same land use is categorised by different countries.

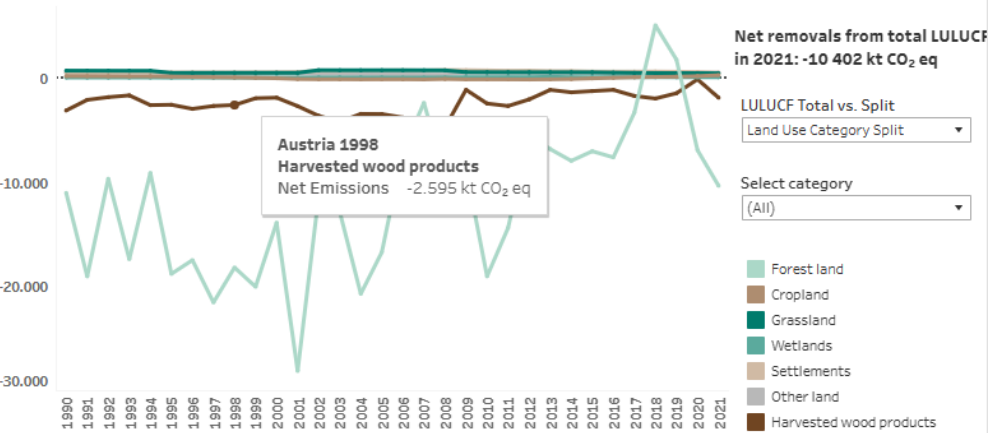


Please use the results of the quality checks of MS GHG inventories: this already gives you insights on the quality and methodological fitness of the inventory and also see the online inventory data.

<https://climate-energy.eea.europa.eu/countries>

and [EEA greenhouse gases - data viewer](#)

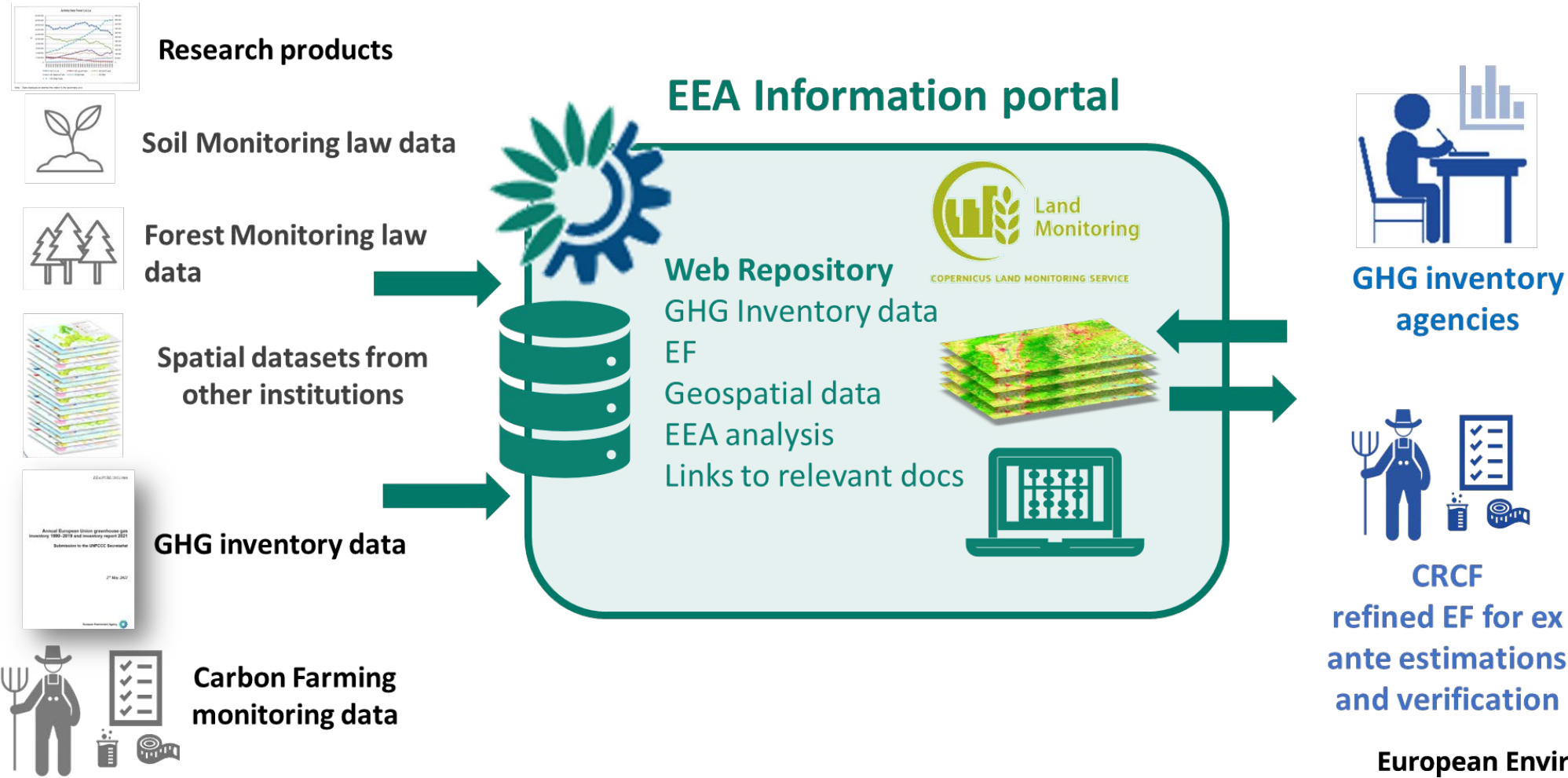
LULUCF net emissions/removals by land use categories



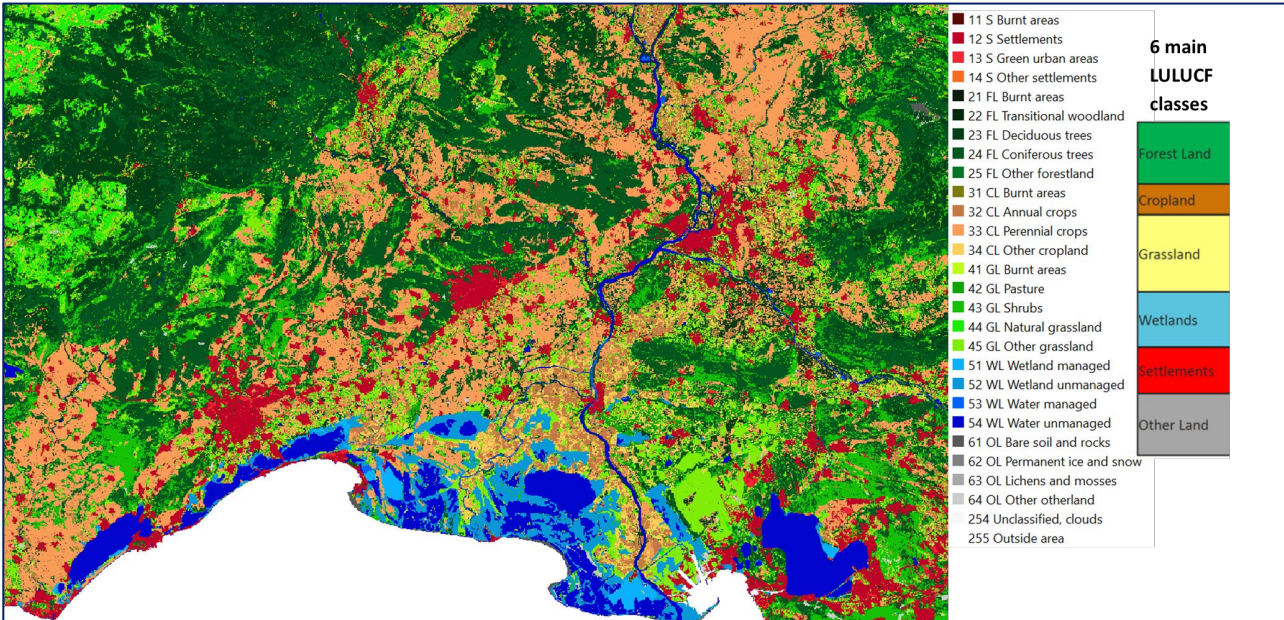
*Emissions is a positive number and removals is a negative number.

The way forward – an information portal to guide data retrieval

We are aware that detailed activity data and detailed emission factor and carbon stock change data are needed and available: a repository for data exchange is under consideration

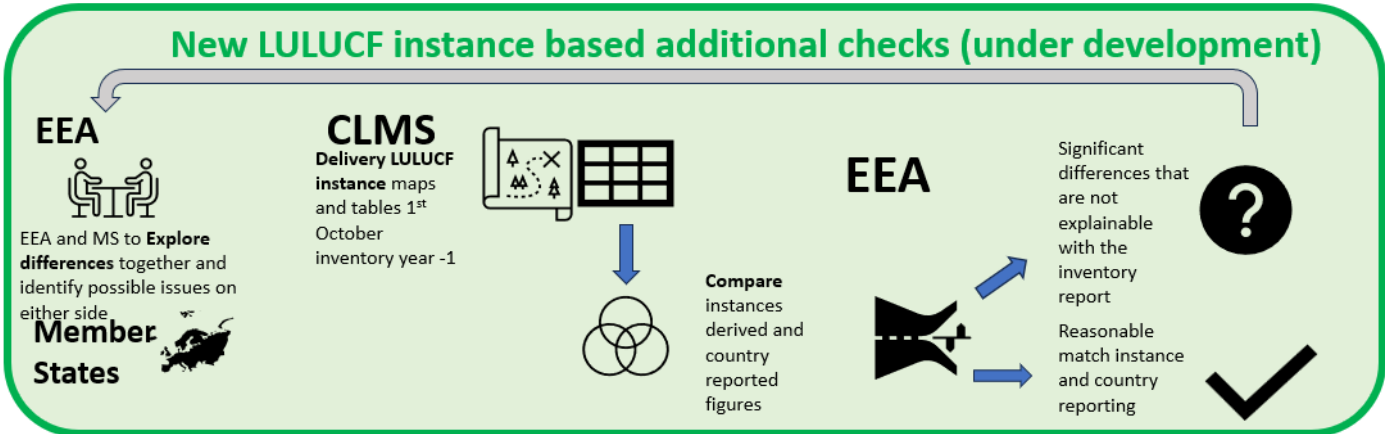


The way forward – land use reference data



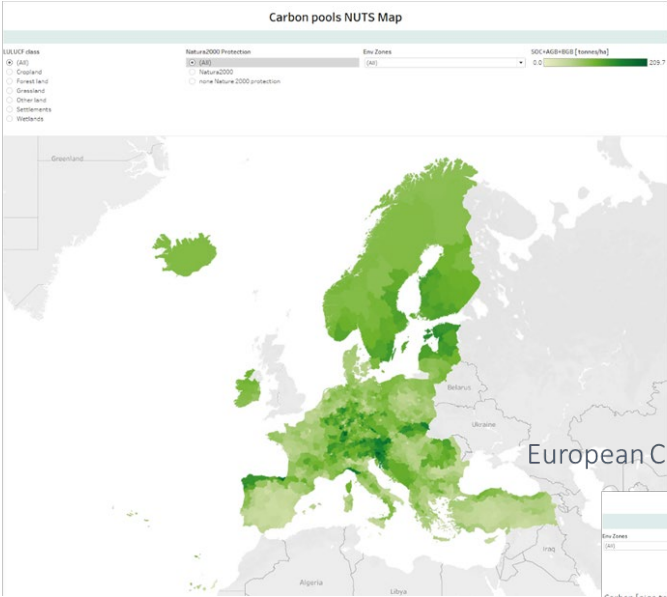
We provide Copernicus Land Monitoring Service land use data to inspire moving to geospatial explicit emission inventory calculations and to provide reference data on land use with annual updates (LULUCF instance)

Training sessions will be organised in 2024 how to use the LULUCF instance data and database system.

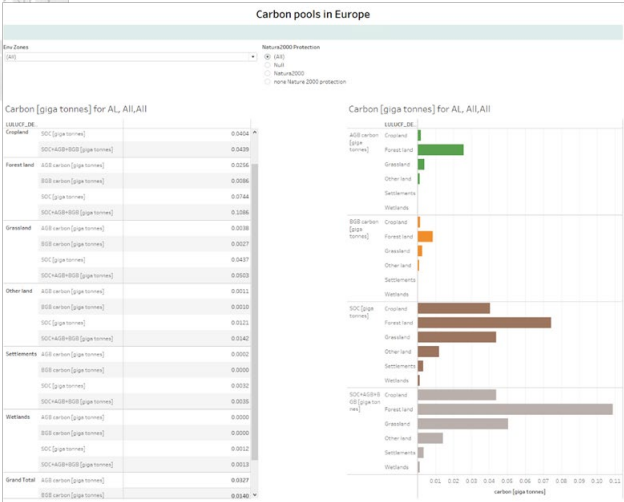


The way forward – other geospatial data in support of LULUCF

European C stock map (10km grid): AGB, BGB, SOC



European C stock statistics by country, protected areas, env. zones



Beta versions of other geospatial datasets are developed to test methodologies and data availability to inspire and apply in LULUCF MRV

EEA report on land based carbon removals (to be published in 2024)

The way forward – interaction and information exchange

Technical support workshops: The JRC organises annual technical workshops on latest developments in scientific methods and monitoring strategies. They address emission inventory experts

Emission inventory support workshops: organised by EEA to present results and insights of the quality control and review activities as well as inventory compiler experience with the practical and technical challenges and linking inventory and policy communities and between experts from different fields

Policy exchange workshops: These are organised by EEA under the EIONET umbrella and with support from the European Commission. They address policy makers outside the legal setting and offer opportunities to exchange ideas for and results from land use policies that address LULUCF sector emissions and removals.

Seconded national experts (1 year opportunity to work at EEA)

You are very welcome to Copenhagen and visit the EEA and discuss with us (or vice versa)



© Stefan Wilmer, Well with Nature /EEA - A bed in the cornfield

After a nice and hopefully relaxing end-of-year holiday, please reach out to us and tell how we can help you!

for holiday reading 😊

Read the EEA's comprehensive assessment report, *The European biomass puzzle* to learn more.



Thank you

