

GETTING STARTED WITH LAND POLICIES AND THE REVISED LULUCF REGULATION

2023 “HANDBOOK” WORKSHOP

18-19.12.2023





AGENDA

UNBOXING

RESULTS FROM 2023

NETWORKING

WHAT'S NEXT

THE HANDBOOK

UNBOXING
MY
SINTERKLAAS
PRESENT

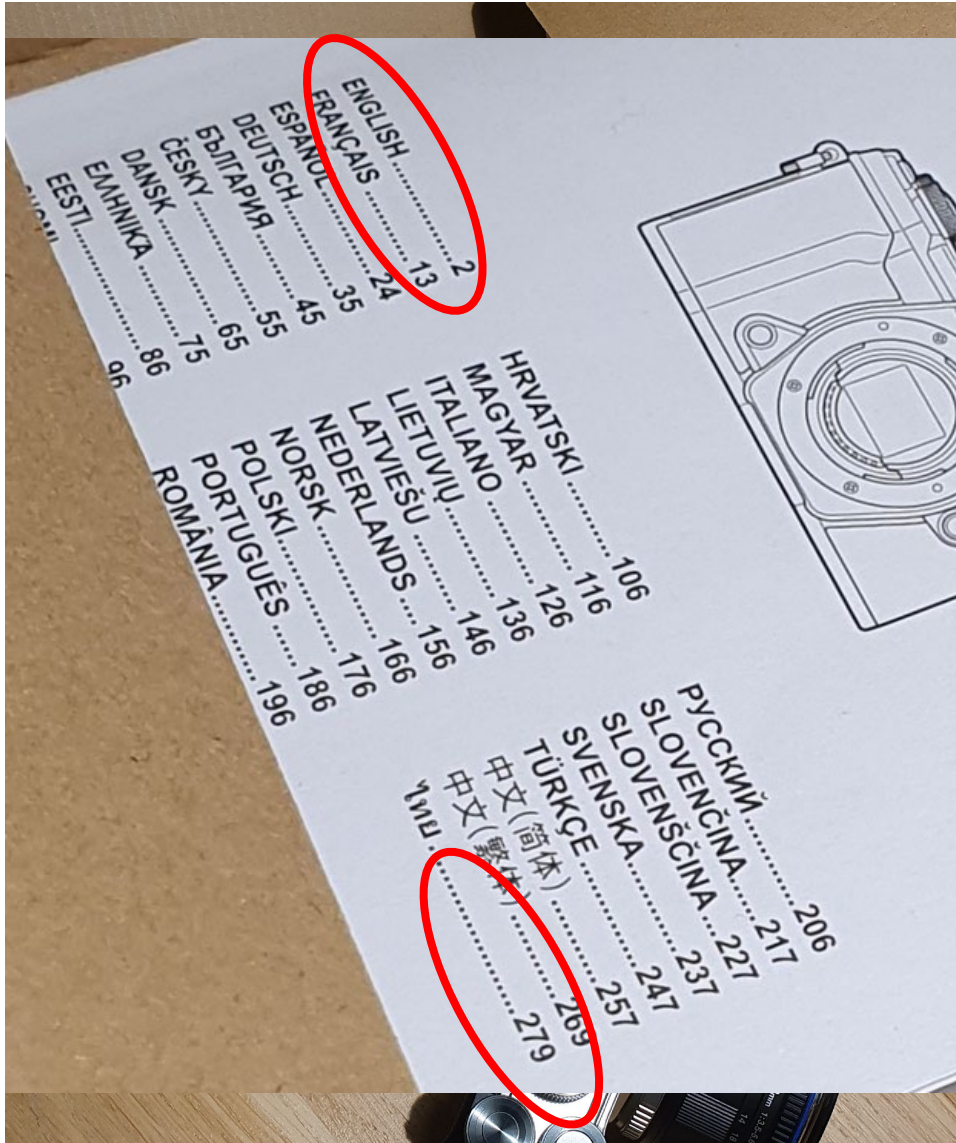
LET'S DIVE IN



HOW DO I TAKE A PHOTO?

- THIS THING IS WAY TO COMPLEX
- IT'LL NEVER WORK
- I DIDN'T ASK FOR THIS





AHA. READ THE
“BASIC MANUAL”

- 279 PAGES OF USELESS INFO
- E.G. HOW TO INSERT THE BATTERY

DIGITAL CAMERA

OM SYSTEM

OM-5

Instruction Manual



Error codes.....	450
Specifications.....	452
Camera.....	452
Lithium-ion battery.....	457
USB-AC adapter.....	457
SAFETY PRECAUTIONS.....	459
SAFETY PRECAUTIONS.....	459
General Precautions.....	459
⚠ WARNING.....	460
⚠ CAUTION.....	462
⚠ NOTICE.....	462
Trademarks.....	465

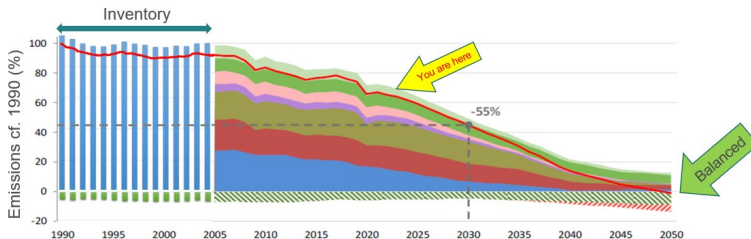
INSTRUCTIONS FROM A-Z

• *BUT HOW
DO I TAKE A
PHOTO???*



INSTRUCTIONS,
BUT NOT A
MANUAL

HOW DO WE
~~PHOTO~~
ENHANCE
REMOVALS?



EUR-Lex
Access to European Union law

English EN My EUR-Lex

Experimental features

MENU QUICK SEARCH

EUROPA > EUR-Lex home > EUR

Need more search options? Use the Advanced search

Share

2018/841 as regards the
2030, and Regulation
(with EEA relevance)

PT, RO, SK, SL, FI, SV

Expand all Collapse all

L 107/1

EUROPEAN PARLIAMENT AND OF THE COUNCIL

April 2023

Regulation (EU) 2018/841 as regards the scope, simplifying the reporting and compliance rules, and setting out
of the Member States for 2030, and Regulation (EU) 2018/1999 as regards improvement in monitoring, reporting,
tracking of progress and review

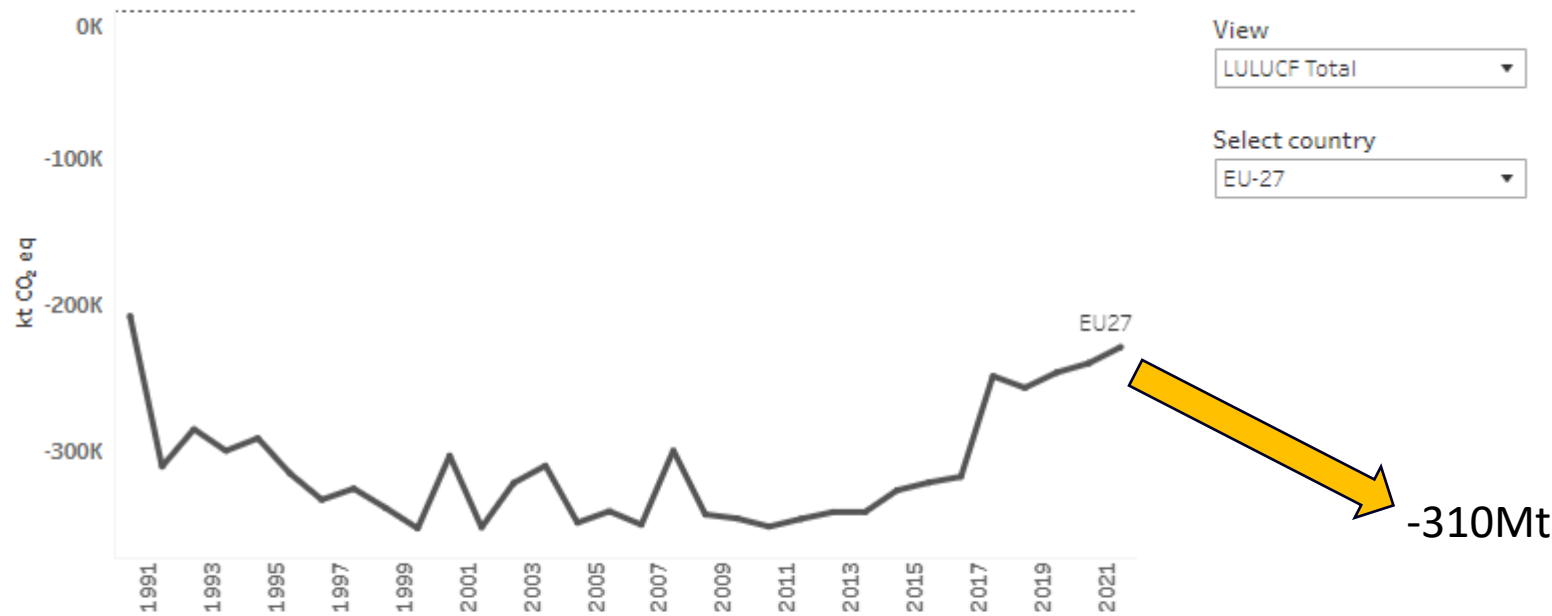
(Text with EEA relevance)

THE EUROPEAN PARLIAMENT AND THE COUNCIL OF THE EUROPEAN UNION,
Having regard to the Treaty on the Functioning of the European Union, and in particular Article 192(1) thereof,
Having regard to the proposal from the European Commission,

Use the
consolidated
2018/841!
[https://europa.eu/
!RpJdTY](https://europa.eu/!RpJdTY)

STATE OF PLAY: BENDING THE TREND

Total LULUCF net emissions/removals*
EU-27

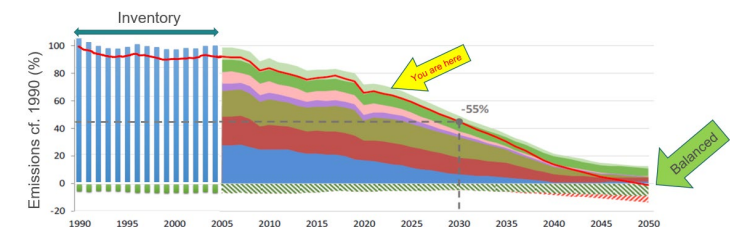


See: <https://climate-energy.eea.europa.eu/topics/climate-change-mitigation/land-and-forests/data>

*Emissions is a positive number and removals is a negative number.

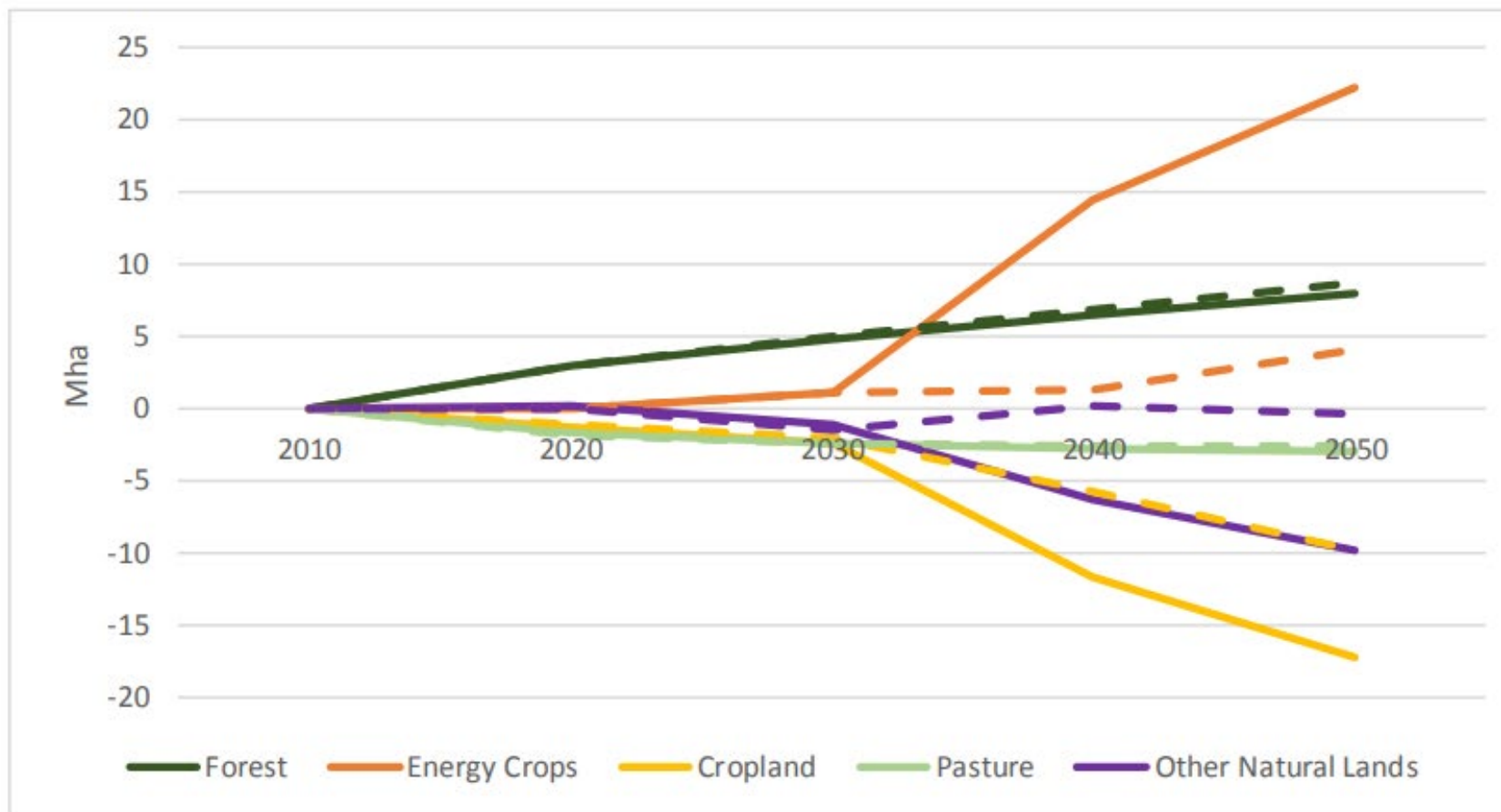
Emissions and removals due to land use conversion, e.g. from forest to settlements, is reported under the new land use. As an example, this means that emissions from the loss of forest from expanding a village into a forest area will be reported under settlements and not under forest.

The mitigation effect provided by the LULUCF sector through the production of wood and other biomass that replace fossil fuel-based products, e.g. when wood is used in the building sector, is not reported under the LULUCF sector but rather recognised in the sector where the biomass is used.



CLIMATE TARGET PLAN – 55% REDUCTION BY 2030 AND BEYOND TO 2050 NEUTRALITY: LAND USE CHANGE

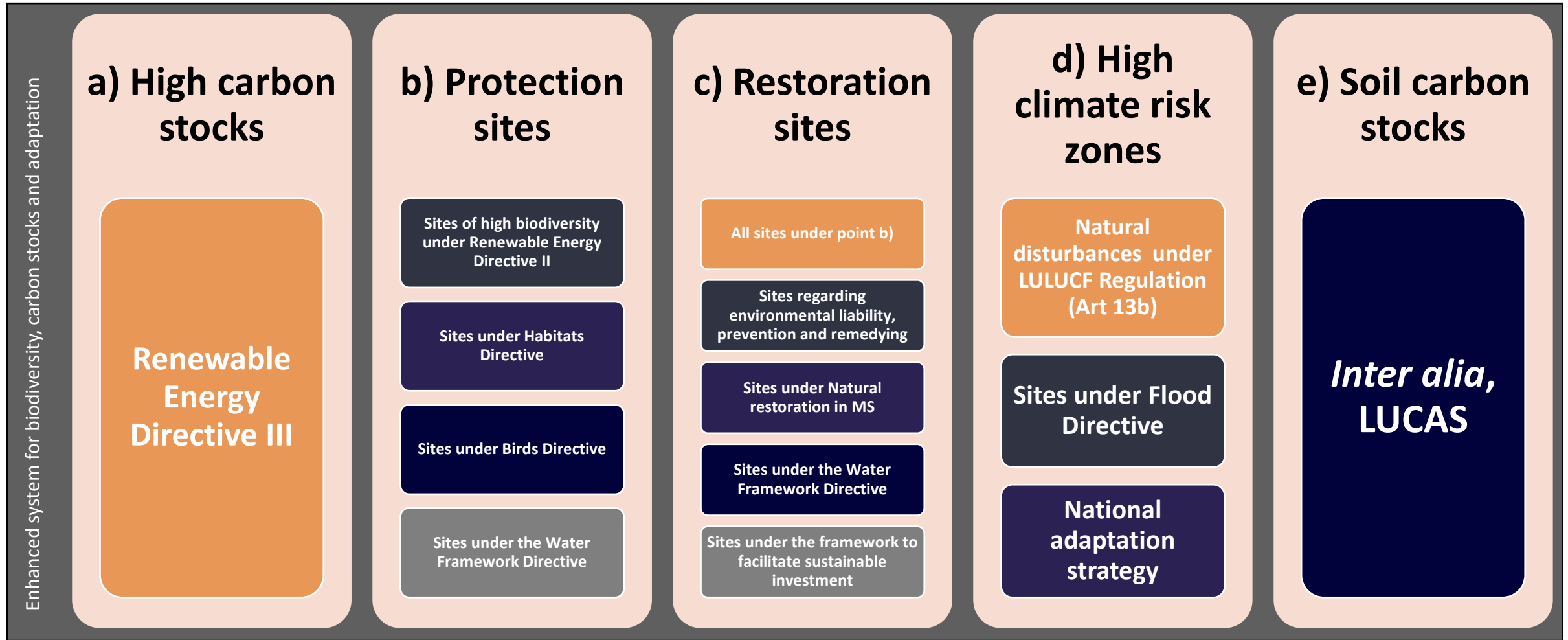
Figure 85: Changes in land use in the baseline scenario (dashed line) and in the mitigation scenario (solid line)



Reference: European Commission <https://europa.eu/!cH8dtT>

Source: GLOBIOM model

ENHANCED LULUCF MONITORING SYSTEM



Links to Biodiversity Strategy, Nature Restoration Law, FML proposal

Soil Monitoring and resilience proposal

A

AND SECTOR WILL HELP TO:



Improve
forests

the bio-economy
preserving biodiversity

Increase carbon stored in
soil and forests

Increase
wood and bio-products

support production of
sustainable food



MEET THE CLIMA TEAM @CPH

Lucia

Handling the handbook and LULUCF development

Simon

Outlook for the land sector and synergies

Jurij

Our geo-data guy and natural/climate disturbances

Stina

Coordinating our progress assessments

Nanna

Doing the legal files on flexibilities

Frida

Helping out with LUCAS, biodiversity and JRC



MEET THE TEAM (EEA)



John van Aardenne

Head of Group Carbon Emissions and Removals
Monitoring (CET3)

Katarzyna Kowalczyńska

Agriculture and LULUCF Integration

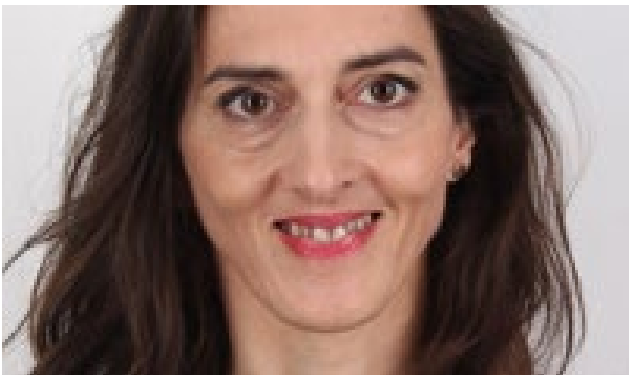


Peter Iversen

LULUCF initial checks, Forest and Climate

Lucia Perugini

Carbon Farming Certification and LULUCF



Claire Qoul

Climate Change Mitigation Reporting

Tobias Langanke

Copernicus and LULUCF





MEET THE TEAM (2)

ANU KOROSUO (JRC)

LULUCF GHG reporting, forest reference levels, policy analysis

SIMONE ROSSI (JRC)

Spatial data, Global estimations



ASGER OLESEN (CRCF expert group)

[Link to CRCF expert group discussions](#)





HANNES



ANKE



CRISTINA

HANNES BÖTTCHER

Project coordination, Forestry, Biomass

ANKE HEROLD

Project coordination, Soils

CRISTINA URRUTIA (ONLINE)

Project coordination, Climate policy

SABINE GORES (ONLINE)

Governance Regulation, Targets, Budgets

ETIENNE MATHIAS

Cropland, Grassland, Geographically-explicit monitoring

COLAS ROBERT (ONLINE)

Cropland, Grassland, Geographically-explicit monitoring

VALENTIN BELLASSEN

Soils, Models

AMELIE LINDMAYER (ONLINE)

Geographically-explicit monitoring

KARIN ATTSTRÖM

Workshop organisation



SABINE



ETIENNE



COLAS



VALENTIN



AMELIE



KARIN





WHAT'S NEXT

LOOKING AHEAD

2024 TIMELINE



**Implementing Regulation
on additional compensation**
LULUCF Art. 13b(6)(b)

➔ *To WG1*

➔ *To CCC*

➔ *Adoption*

**Delegated Regulation
on registry**
LULUCF Art. 15(1)

➔ *To CCEG*

➔ *Adoption*

**Amendment
Impl. Reg. (EU) 2020/1208**
pursuant to Governance Regulation

➔ *To WG2* ➔ *To CCC* ➔ *Adoption*

**Report
on LULUCF operation**
LULUCF Art. 17(2)

➔ *Adoption*

2024 TIMELINE



Concept Note on “500-kt rule” verification
GovReg Art. 37(6)

➡ *To WG1*

Concept Note on Corrective action
LULUCF Art. 13d

➡ *Draft*

Evaluation of LULUCF Regulation
LULUCF Art. 17(3)

➡ *Start*

Yearly cycle Climate Action Progress Report (CAPR)

➡ *2022 Data*

➡ *2023 Proxy data*

➡ *Adoption*

GOALS FOR 2024



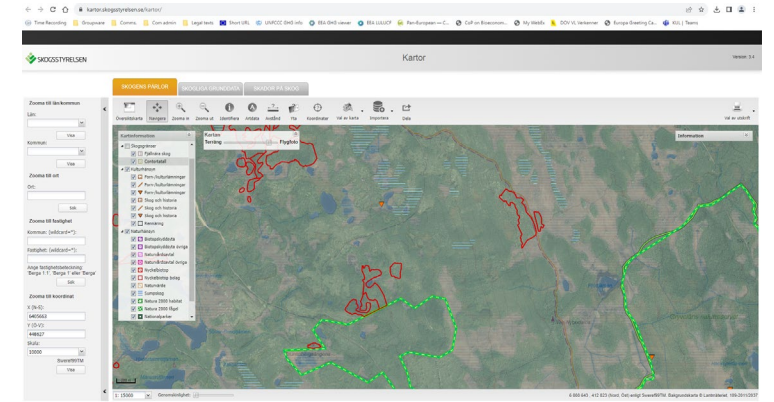
Connect great initiatives like

- Horizon Europe, Life – R&I
- Member State innovation
- CRC methods
- Etc.



Focus on actions and policies

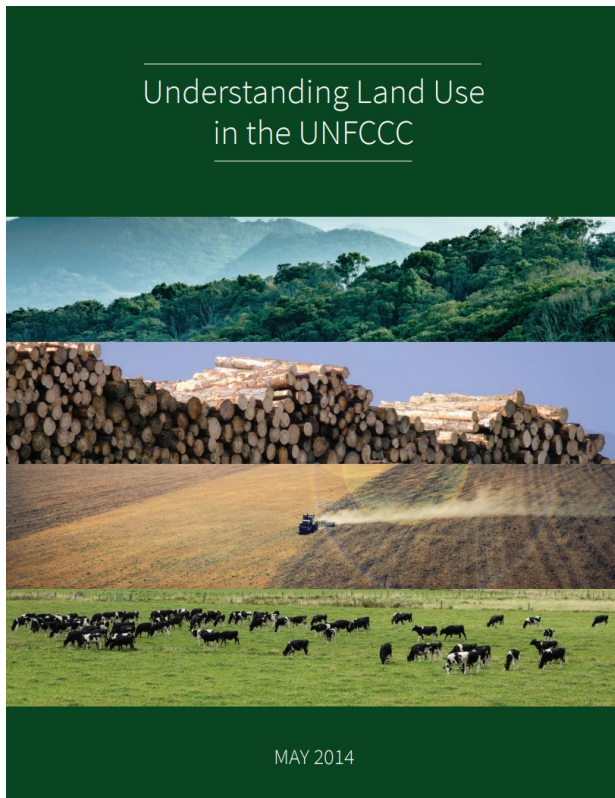
- Share experience of getting things implemented
- Open up to more communities (science, carbon farming and certification)



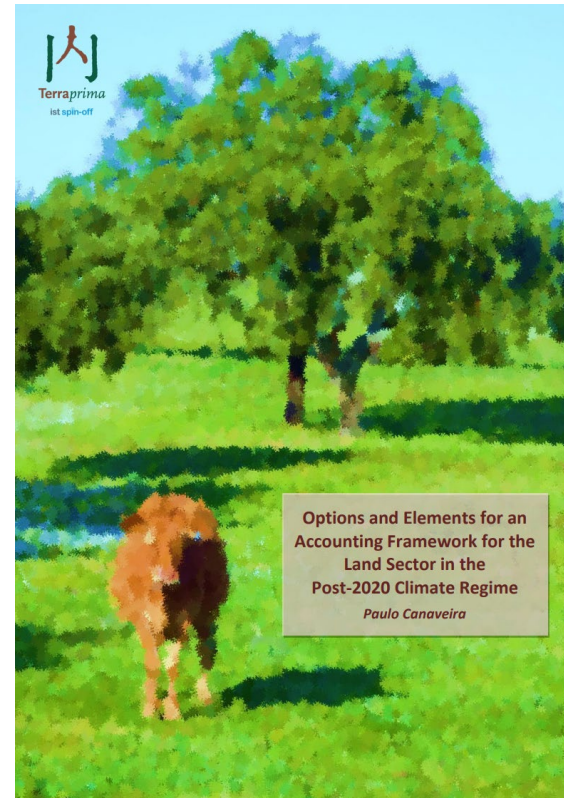
Help open access to geographically explicit datasets

- IACS, LPIS
- National mapping
- National portals

WE'VE DONE GUIDANCE BEFORE:



Peter Iversen et al.,
2014



Paulo Canaveira,
2013 (*Lucia Perugini in credits*)



Various,
international
2014



Peter Weiss et al.,
2014



SUMMARY

WE NOW NEED TO STEP UP THE ACTION

Improving inventories and numbers is not going to be enough

POLICY DEPENDS ON GOOD DATA

Let's try and work with the best we can get our hands on

GRAB SYNERGIES WHERE WE CAN

Flanking policies, finance, resilience, biodiversity



THANK YOU!

simon.kay@ec.europa.eu

LULUCF regulation revision: <https://europa.eu/!RpJdTY>

LULUCF Impact Assessment: <https://europa.eu/!NG7K6U>

Certification Removals Carbon proposal: <https://europa.eu/!8mGymM>



© European Union 2023

Unless otherwise noted the reuse of this presentation is authorised under the [CC BY 4.0](https://creativecommons.org/licenses/by/4.0/) license. For any use or reproduction of elements that are not owned by the EU, permission may need to be sought directly from the respective right holders.

