

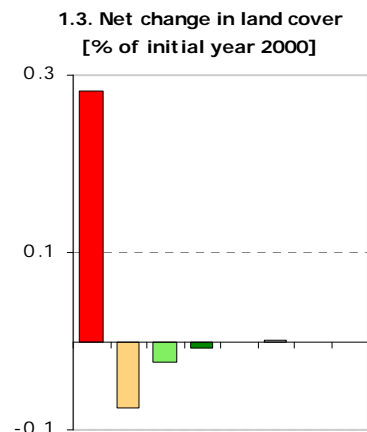
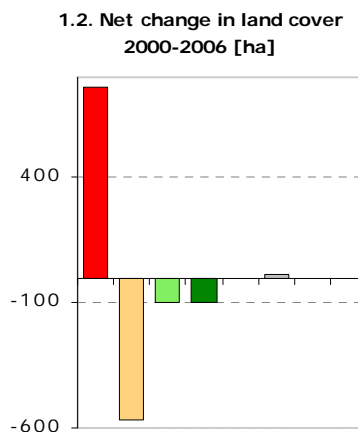
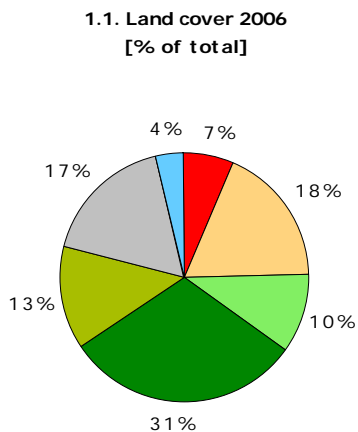
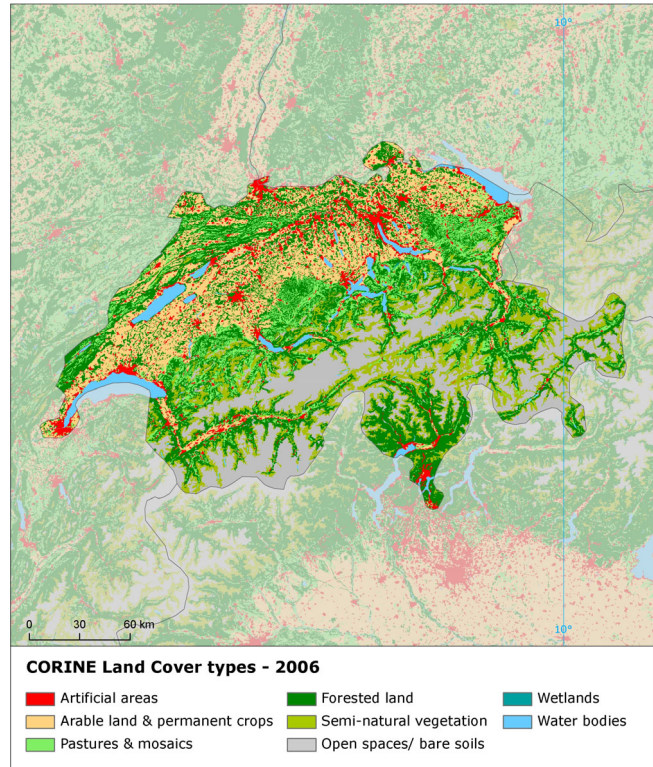
Switzerland

Land cover 2006

Overview of land cover & change 2000-2006

The landscape in Switzerland is characteristic by mountainous areas (about 60% of area), which is reflected also by overall predominant share of forest and natural land cover - forest (31%), open spaces/bare rocks (17%), semi-natural areas (13%), pastures (10%) and water bodies (4%). Artificial areas (7%) and agriculture (18%) are mostly concentrated in the more populous northern part of the country. Overall land cover share in the country is quite stable and land cover development detected during the period 2000-2006 is very low, at least at the scale detected by CLC. Mean annual land cover change rate in Switzerland is only 0.01% of the total area, which represent 3100 ha. Only two main drivers of change to be mentioned here are artificial land take at the expense of former agricultural land and changes due to natural causes, in Switzerland represented by decrease in permanent snow and glaciers cover in alpine areas. Concerning the spatial distribution of changes, the former are scattered over northern part of the country, while the later are concentrated around glacier areas in the south.

Note: The results presented here are based on a change analysis of 44 land cover types mapped consistently on a 1:100.000 scale across Europe over almost two decades 1990-2006 - see Corine land cover (CLC) programme for details. Number of years between CLC2000-CLC2006 data for Switzerland: 6



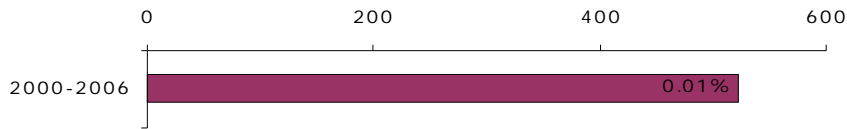
- Artificial areas
- Arable land & permanent crops
- Pastures & mosaics
- Forested land
- Semi-natural vegetation
- Open spaces/ bare soils
- Wetlands
- Water bodies

Summary balance table 2000-2006

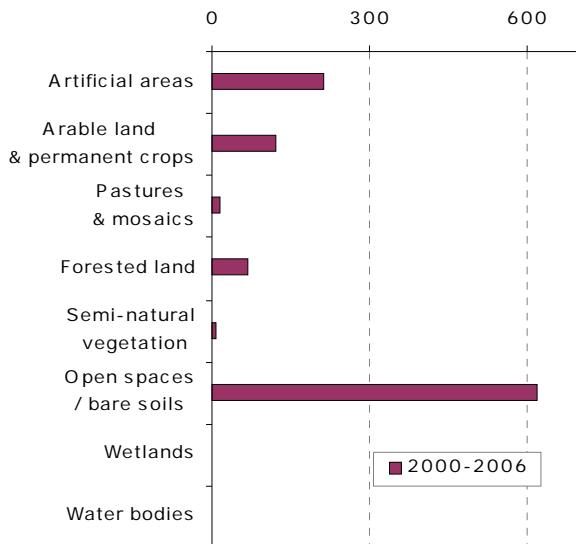
	Artificial areas	Arable land & permanent crops	Pastures & mosaics	Forested land	Semi-natural vegetation	Open spaces/ bare soils	Wetlands	Water bodies	TOTAL [hundreds ha]
Land cover 2000	2697	7489	4278	12639	5544	7176	36	1485	41344
Consumption of initial LC	3	7	1	3	0	19	0	0	31
Formation of new LC	10	1	0	2	0	19	0	0	31
Net Formation of LC	8	-6	-1	-1	0	0	0	0	0
<i>Net formation as % of initial year</i>	<i>0.3</i>	<i>-0.1</i>	<i>0.0</i>	<i>0.0</i>	<i>0.0</i>	<i>0.0</i>	<i>0.0</i>	<i>0.0</i>	<i>0.0</i>
Total turnover of LC	13	7	1	4	0	37	0	0	63
<i>Total turnover as % of initial year</i>	<i>0.5</i>	<i>0.1</i>	<i>0.0</i>	<i>0.0</i>	<i>0.0</i>	<i>0.5</i>	<i>0.0</i>	<i>0.0</i>	<i>0.2</i>
Land cover 2006	2705	7483	4277	12638	5544	7176	36	1485	41344

Land cover trends 2000-2006

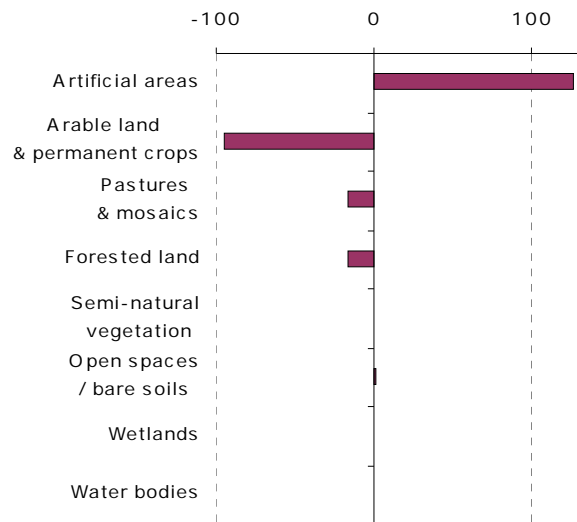
2.4. Annual land cover change
[ha/year, % of total area]



2.5. Annual turnover of LC types
[ha/year]

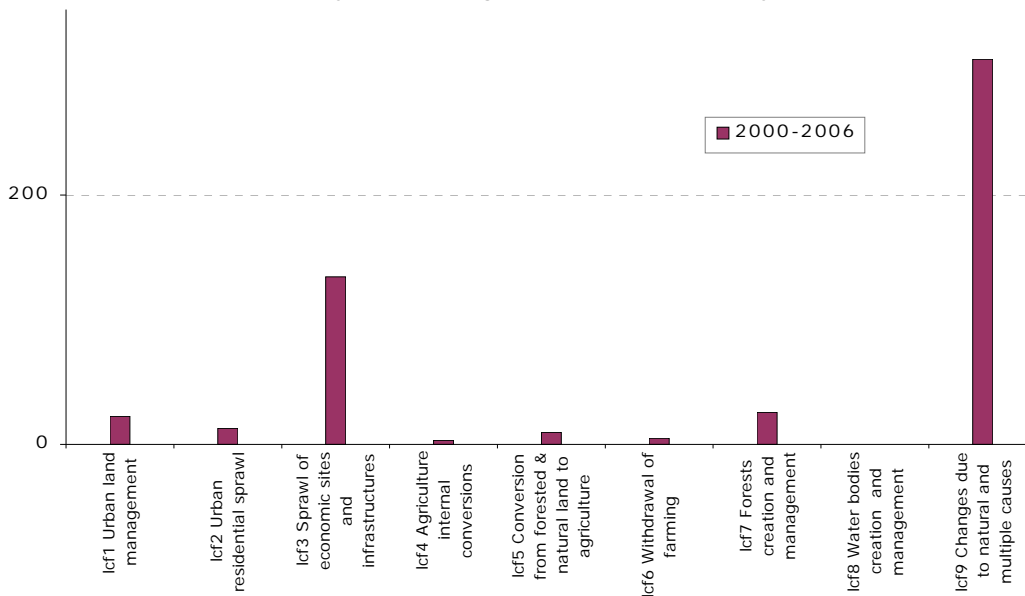


2.6. Net annual change of LC types [ha/year]

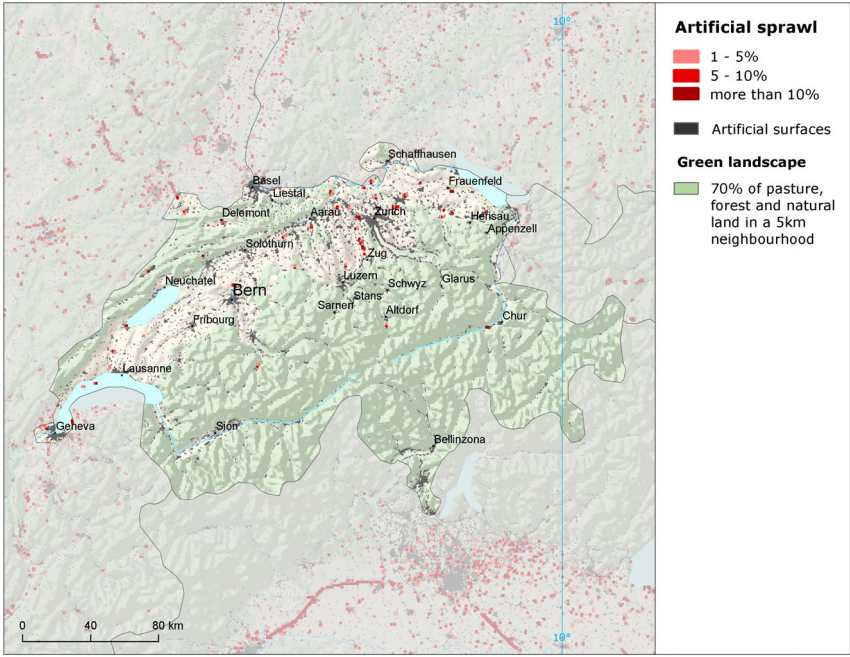


Summary trend figures		2000-2006
Annual land cover change [ha/year]		523
Annual land cover change as % of initial year		0.01%
Land uptake by artificial development as mean annual change [ha/year]		136
Agricultural land uptake by urban and infrastructures development as mean annual change [ha/year]		116
Net uptake of forests and semi-natural land by agriculture as mean annual change [ha/year]		-4
Net conversion from pasture to arable land and permanent crops as mean annual change [ha/year]		2
Forest & other woodland net formation as mean annual change [ha/year]		-17
Dry semi-natural land cover net formation as mean annual change [ha/year]		1
Wetlands & water bodies net formation as mean annual change [ha/year]		0

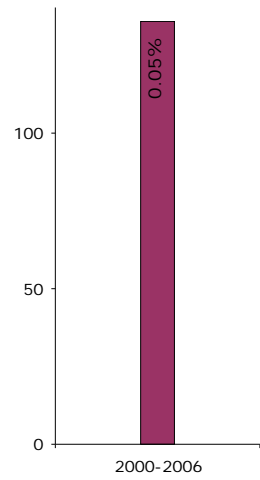
2.7. Intensity of main change drivers (LC FLOWS) [ha/year]



Artificial areas



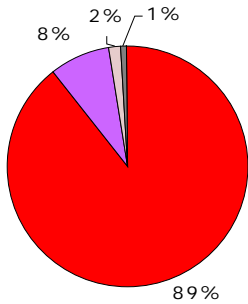
3.8. Artificial land take [ha/year, % of initial year]



Development of sport and leisure facilities

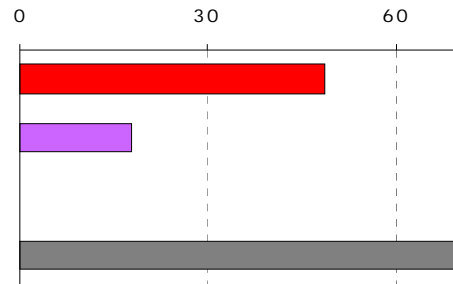
Artificial land take, with highest proportion of sport and leisure facilities formation, is situated mostly into already urbanized Middleland, especially near Zurich and Zug. The sprawl occurs mostly at the expense of former arable land. Beside sport and leisure facilities development, construction and mineral extraction sites extension are the main drivers in this process.

3.9. Artificial surfaces 2006 [% of total area]

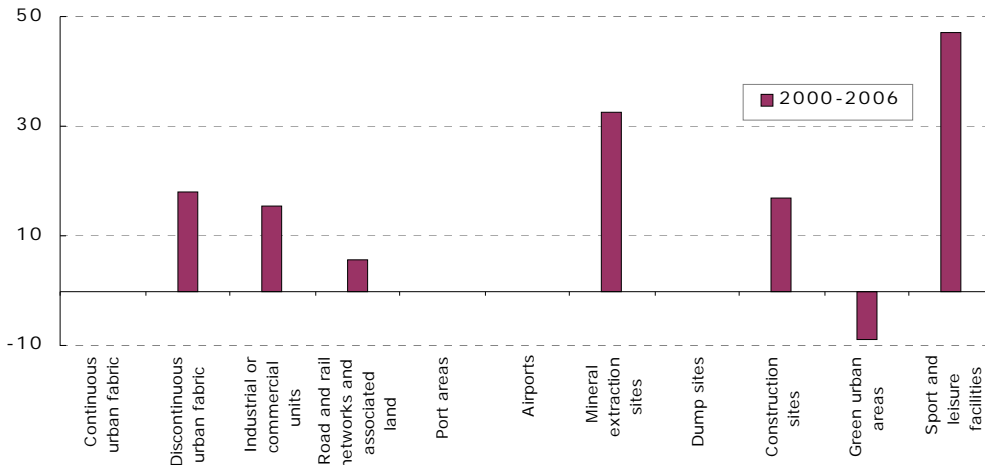


- Housing, services, recreation
- Industrial, commercial units, construction
- Transport networks, infrastructures
- Mines, quarries, waste dumpsites

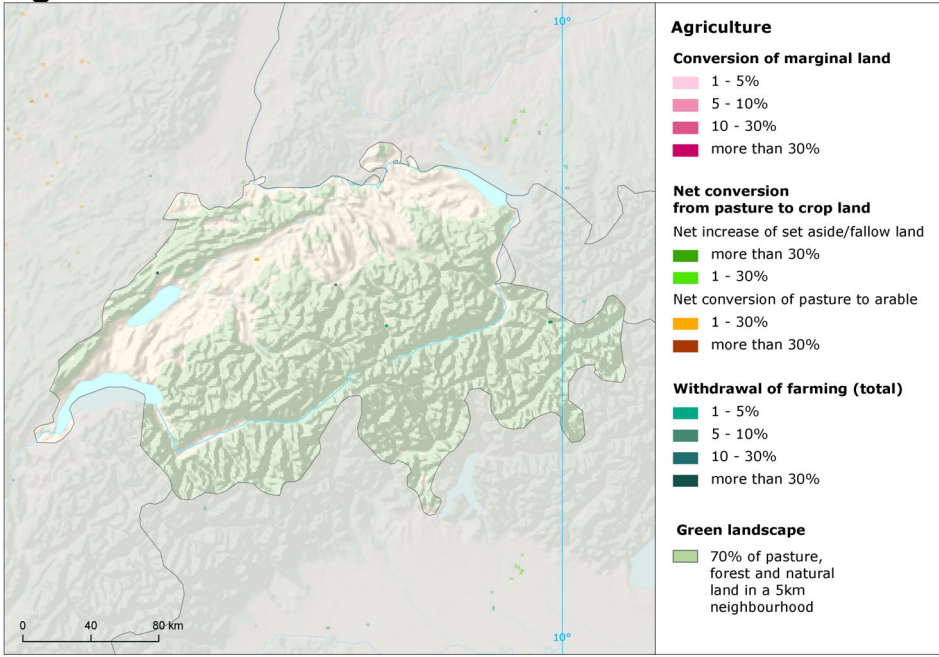
3.10. Artificial land take 2000-2006 [ha/year]



3.11. Mean annual artificial change by class [ha/year]



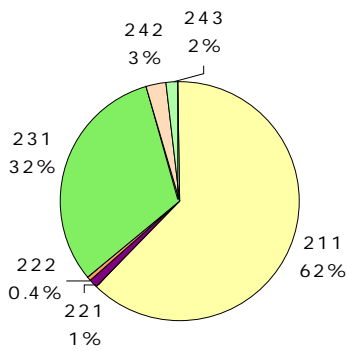
Agriculture



Consumption of arable land

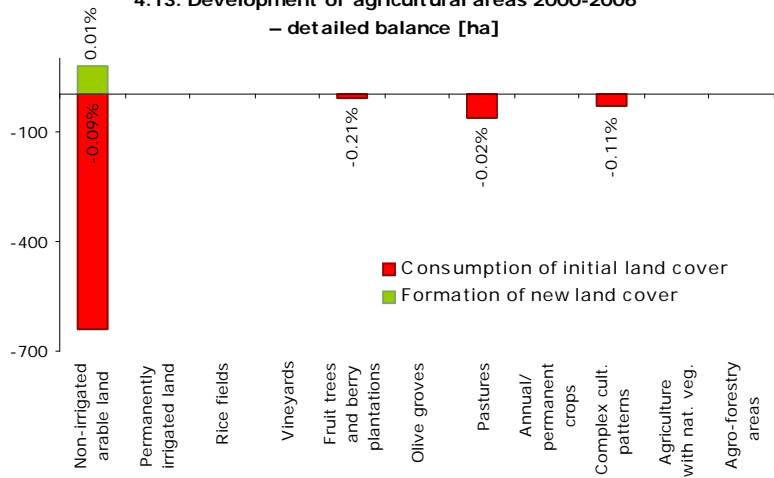
Development of agricultural land is characterised predominantly by uptake of agriculture areas by urban sprawl. In particular, arable land is taken by the sprawl of economic sites and infrastructure. Amount of other agricultural exchanges is neglectable.

4.12. Agricultural areas 2006 [% of total area]

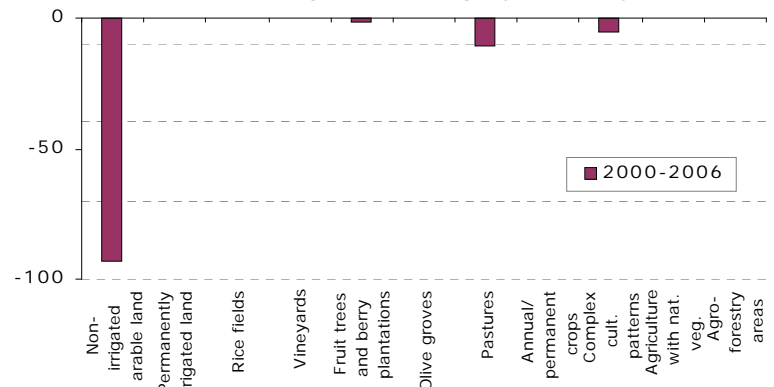


- 211 Non-irrigated arable land
- 212 Permanently irrigated land
- 213 Rice fields
- 221 Vineyards
- 222 Fruit trees and berry plantations
- 223 Olive groves
- 231 Pastures
- 241 Annual crops associated with permanent crops
- 242 Complex cultivation patterns
- 243 Agriculture land with significant areas of natural vegetation
- 244 Agro-forestry areas

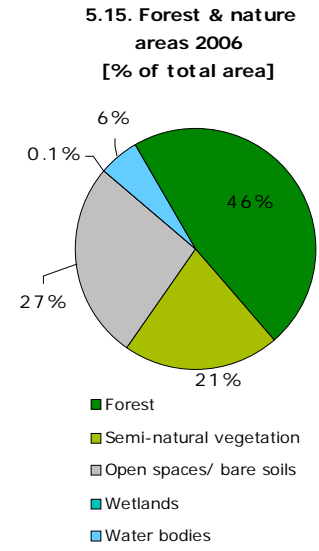
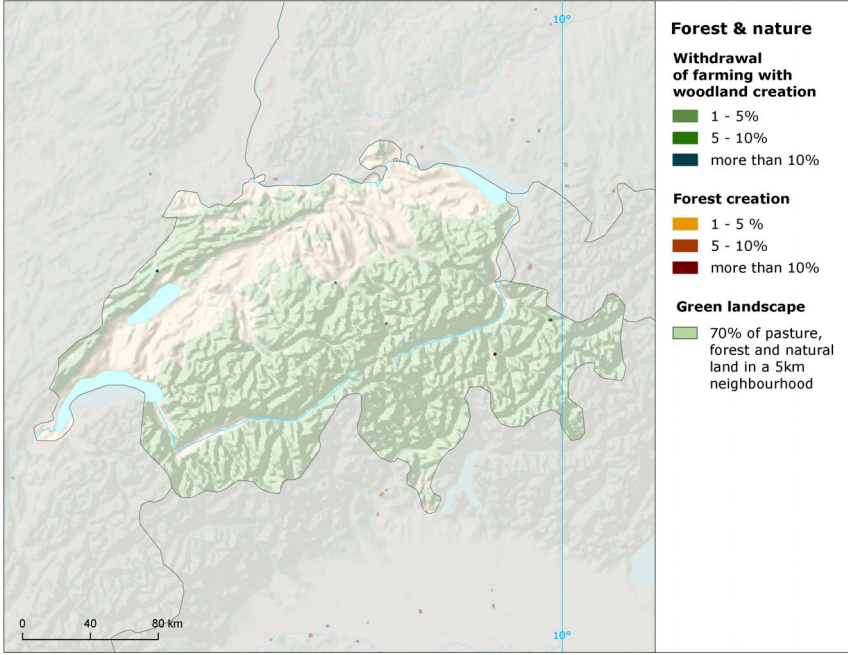
4.13. Development of agricultural areas 2000-2006 – detailed balance [ha]



4.14. Mean annual agricultural change by class [ha/year]

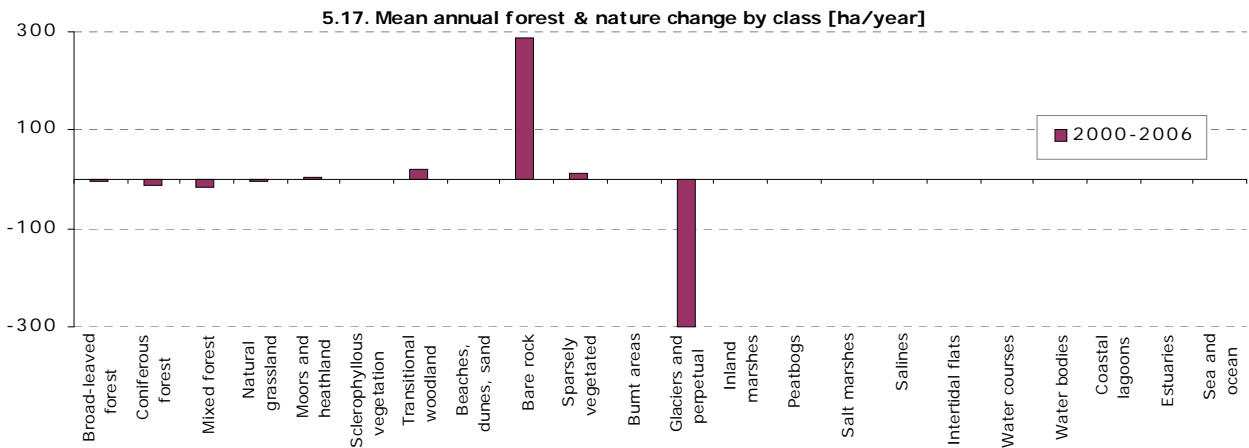
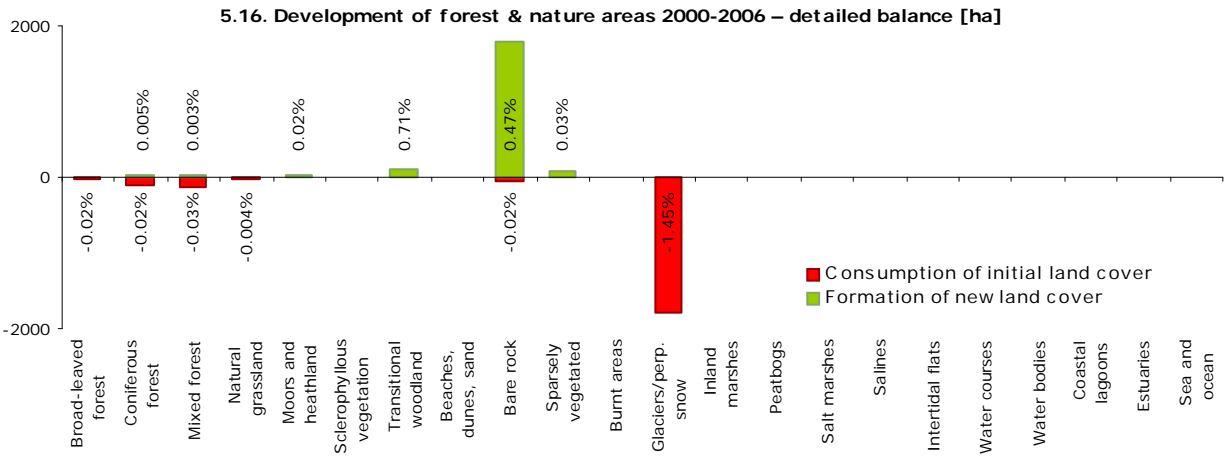


Forest & nature



Glaciers-melt in alpine areas

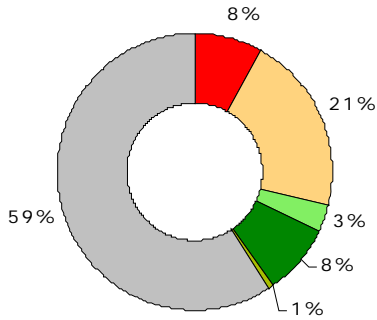
Decrease of permanent snow and glaciers cover in alpine areas is the only significant change in Helvetian natural land cover. There also occurs some exchange of forested land via recent felling and consumption of woodland by artificial development, however, amount of these changes is very small.



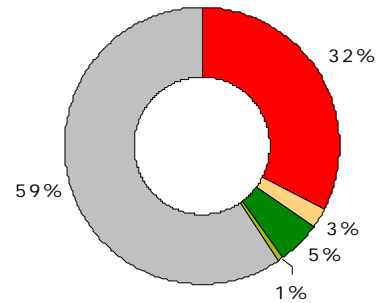
Annex: Land cover flows and trends

Land cover flows 2000-2006

6.18. Consumption of land cover 2000-2006 [% of total change area]

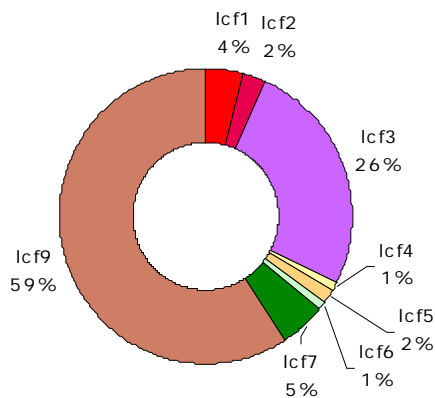


6.19. Formation of land cover 2000-2006 [% of total change area]



- Artificial areas
- Arable land & permanent crops
- Pastures & mosaics
- Forested land
- Semi-natural vegetation
- Open spaces / bare soils
- Wetlands
- Water bodies

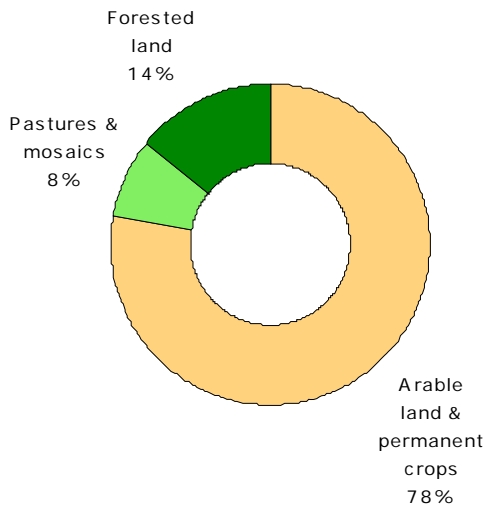
6.20. Drivers of change (LC FLOWS) 2000-2006 [% of total change area]



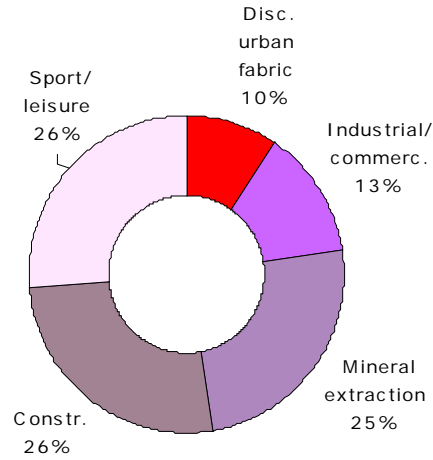
- Icf1 Urban land management
- Icf2 Urban residential sprawl
- Icf3 Sprawl of economic sites and infrastructures
- Icf4 Agriculture internal conversions
- Icf5 Conversion from forested & natural land to agriculture
- Icf6 Withdrawal of farming
- Icf7 Forests creation and management
- Icf8 Water bodies creation and management
- Icf9 Changes due to natural and multiple causes

Artificial areas

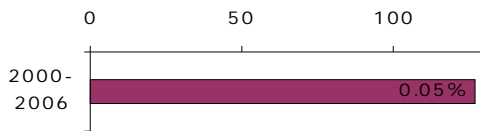
7.21. Consumption by artificial land take 2000-2006 [% of total]



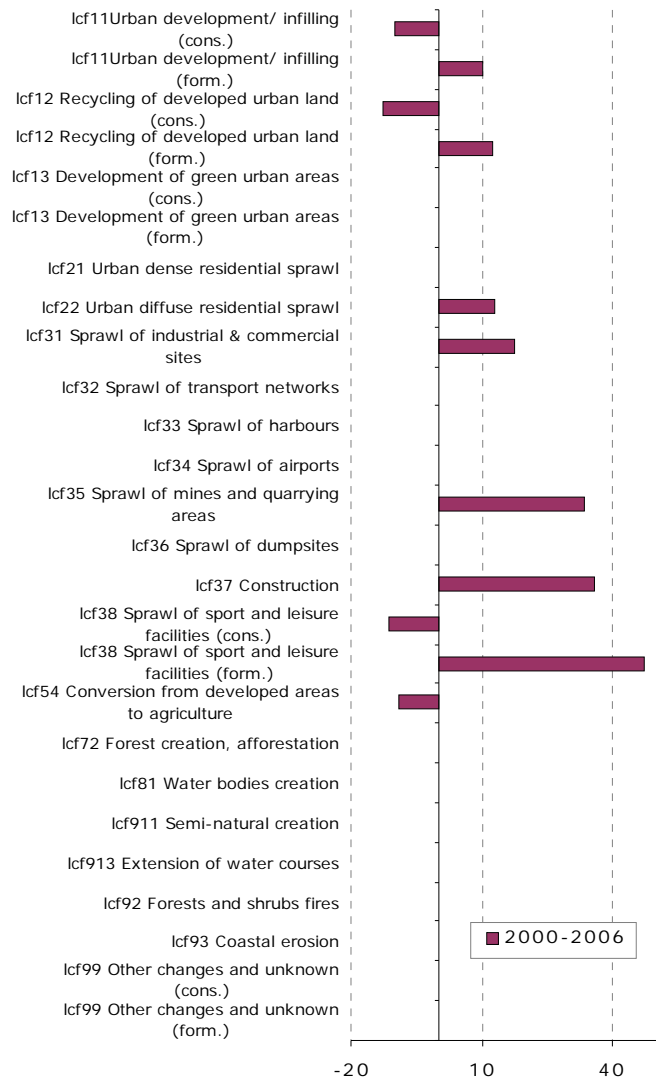
7.22. Formation by artificial land take 2000-2006 [% of total]



7.23. Net formation of artificial area [ha/year, % of initial year]



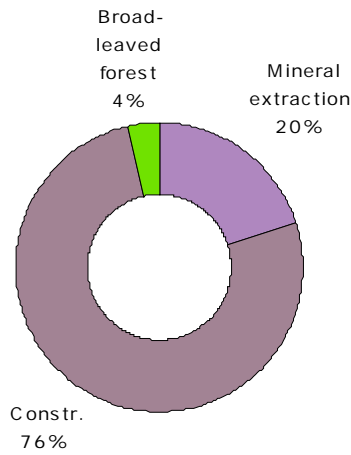
7.24. Artificial development by change drivers (LC FLOWS) [ha/year]



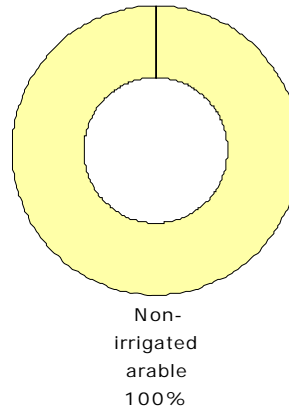
Switzerland

Agriculture

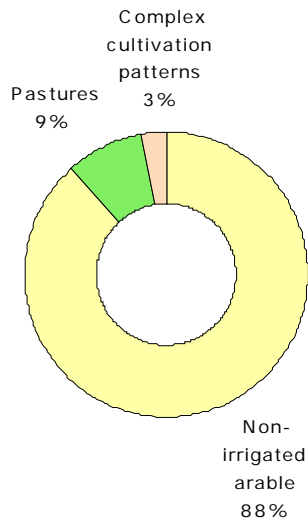
8.25. LC consumed by agriculture 2000-2006 [% of total]



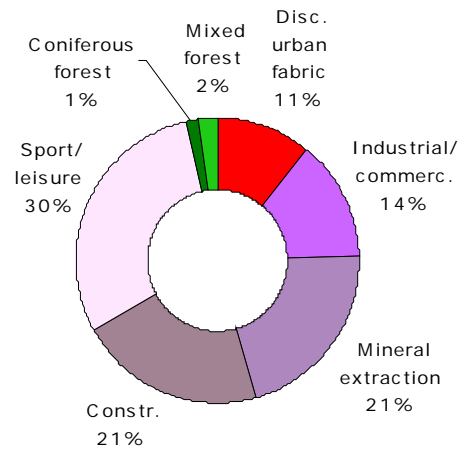
8.26. Formation of agricultural land from non-agriculture 2000-2006 [% of total]



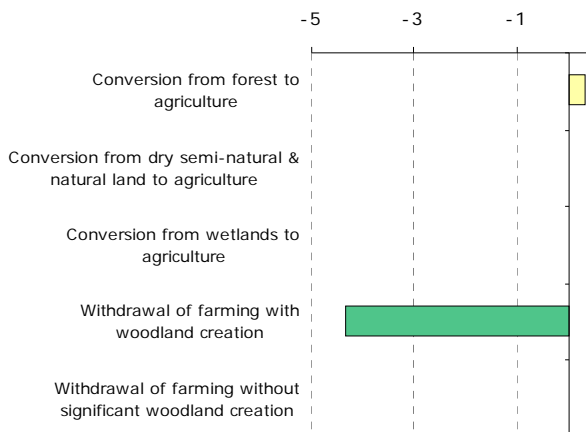
8.27. Consumption of agricultural land by non-agriculture 2000-2006 [% of total]



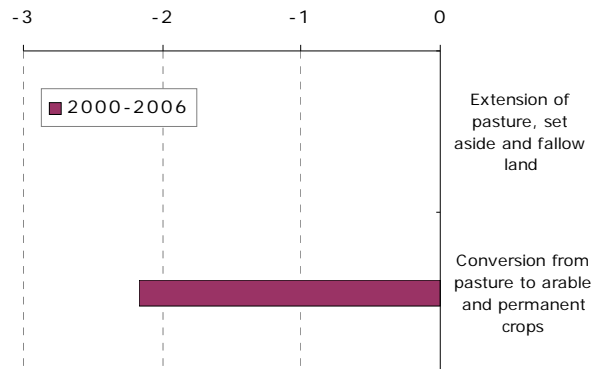
8.28. Formation of non-agricultural land from agriculture 2000-2006 [% of total]



8.29. Main annual conversions between agriculture and forests & semi-natural land 2000-2006 [ha/year]

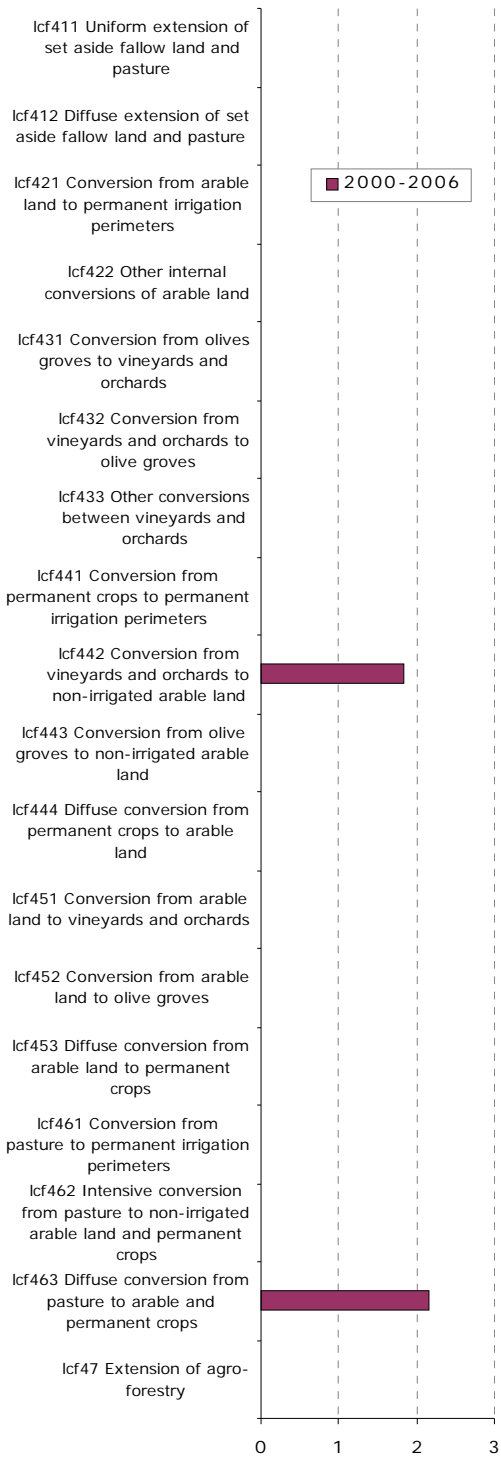


8.30. Mean annual conversion between arable land and pasture [ha/year]

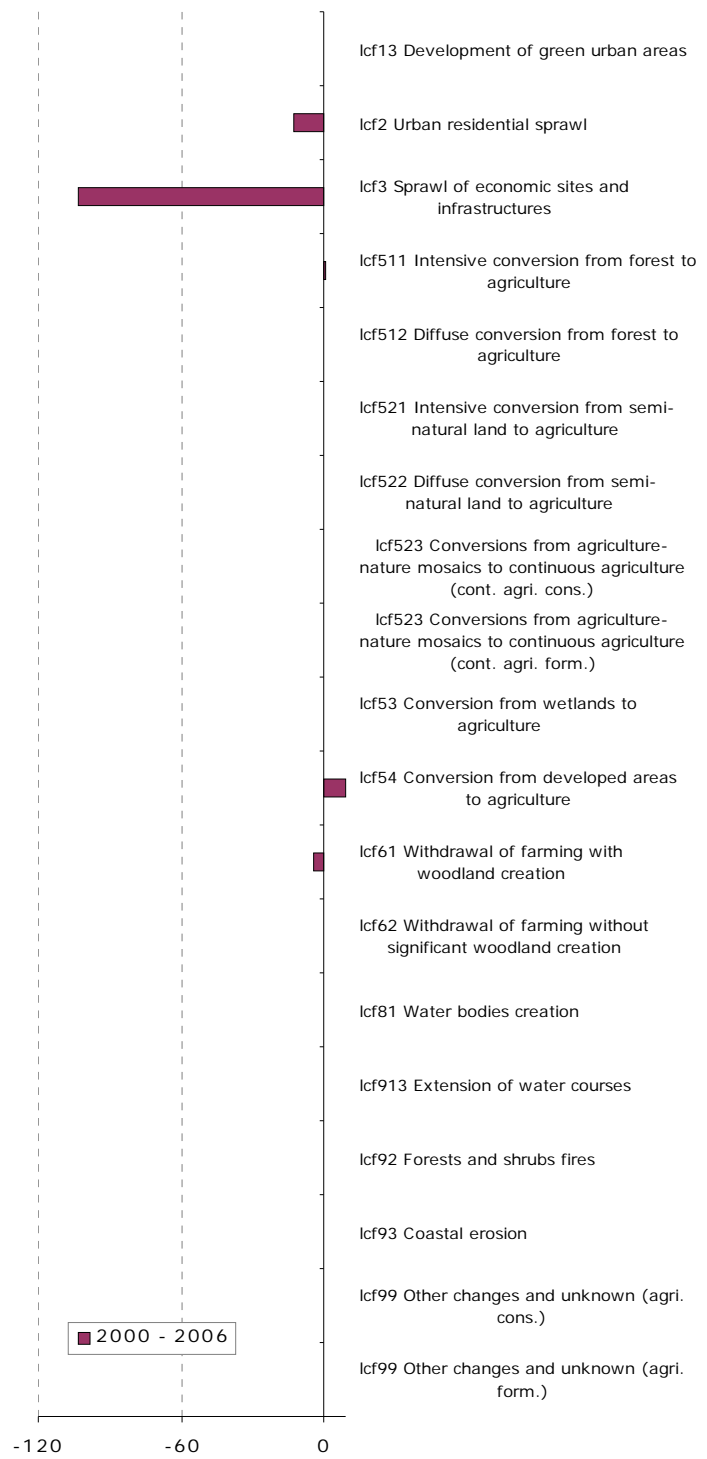


Switzerland

9.31. Mean annual agriculture internal conversions [ha/year]



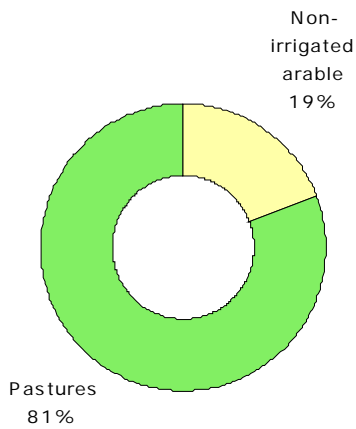
9.32. Mean annual conversions between agriculture and other LC types [ha/year]



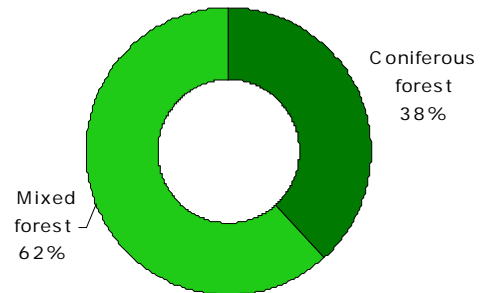
Switzerland

Forest & nature

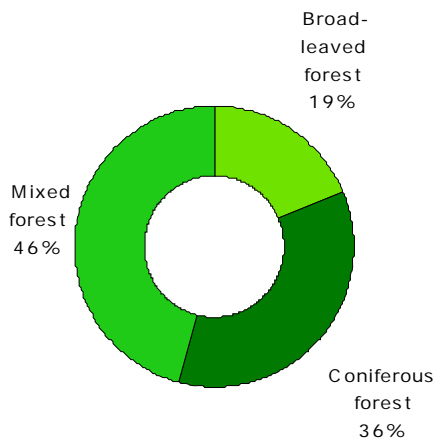
10.33. LC consumed by forest & nature 2000-2006 [% of total]



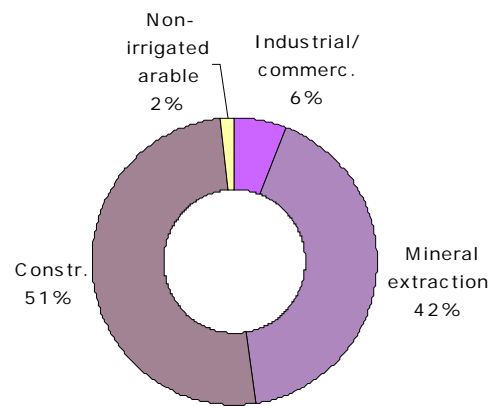
10.34. Formation of forest & nature land from non-forest /nature 2000-2006 [% of total]



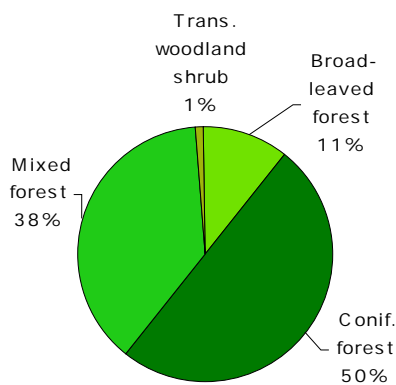
10.35. Consumption of forest & nature land by non-forest/nature 2000-2006 [% of total]



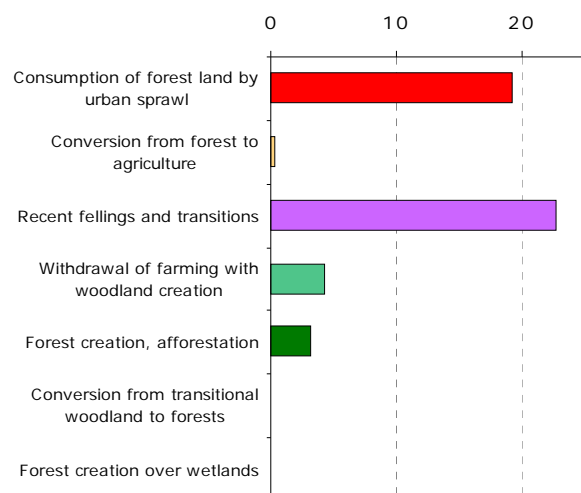
10.36. Formation of non-forest/nature land from forest & nature 2000-2006 [% of total]



10.37. Forested land 2006 [% of total area]

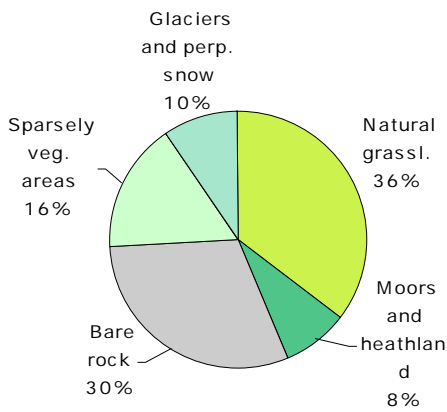


10.38. Main trends in woodland & forests consumption/formation 2000-2006 [ha/year]

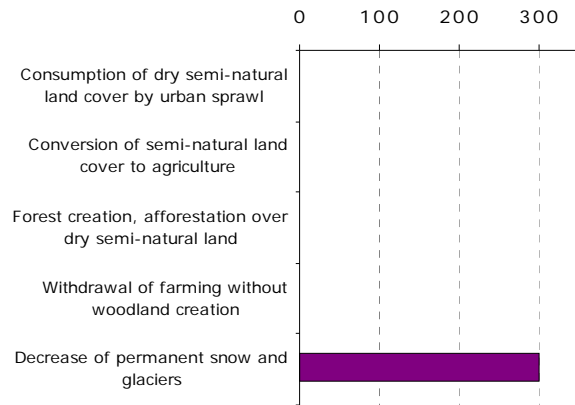


Switzerland

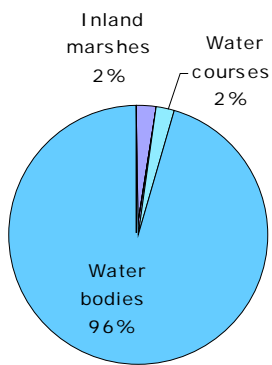
11.39. Dry semi-natural areas 2006
[% of total area]



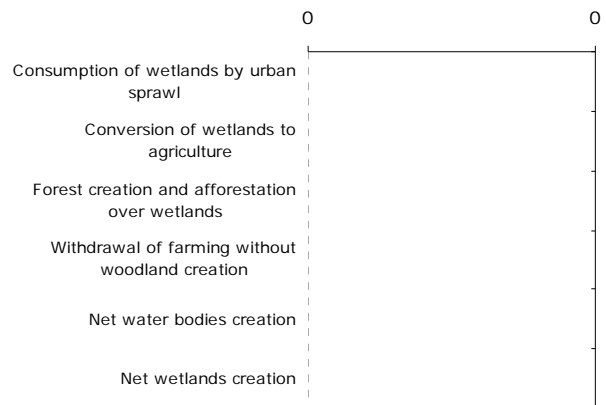
11.40. Main trends in dry semi-natural land consumption/formation 2000-2006 [ha/year]



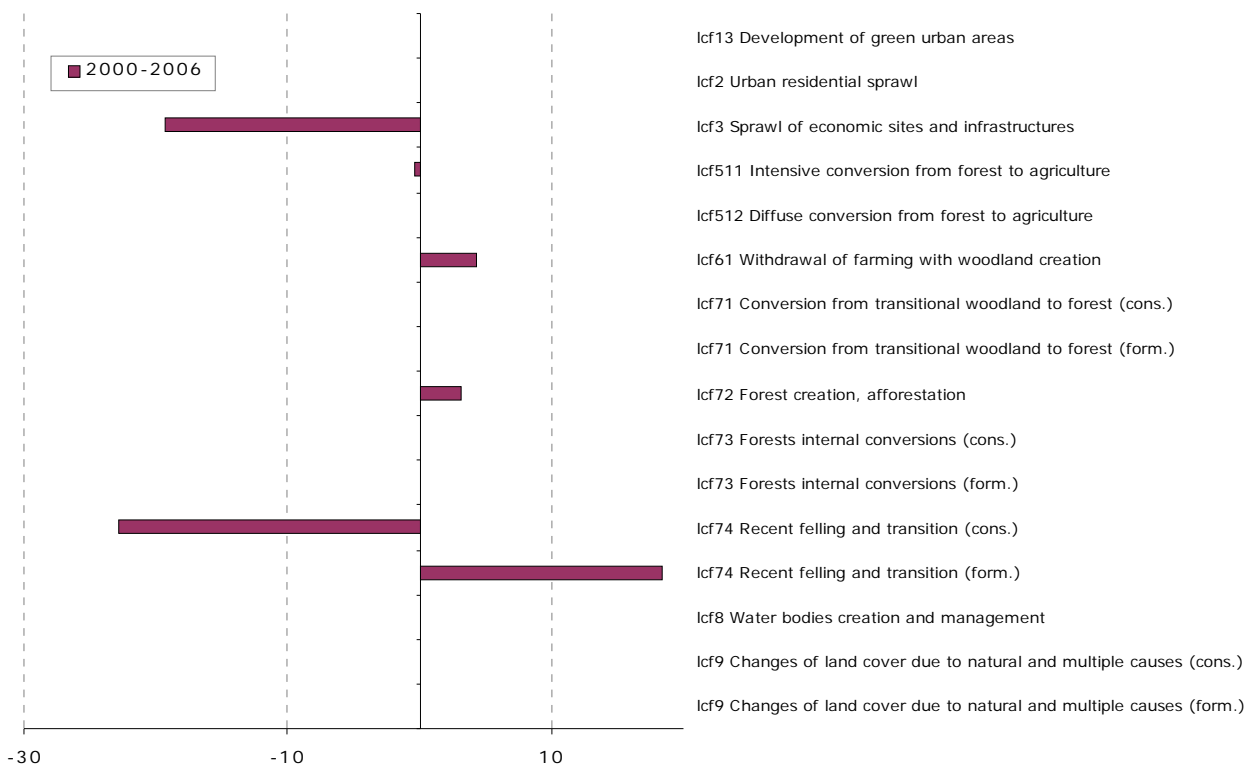
11.41. Wetlands & water 2006
[% of total area]



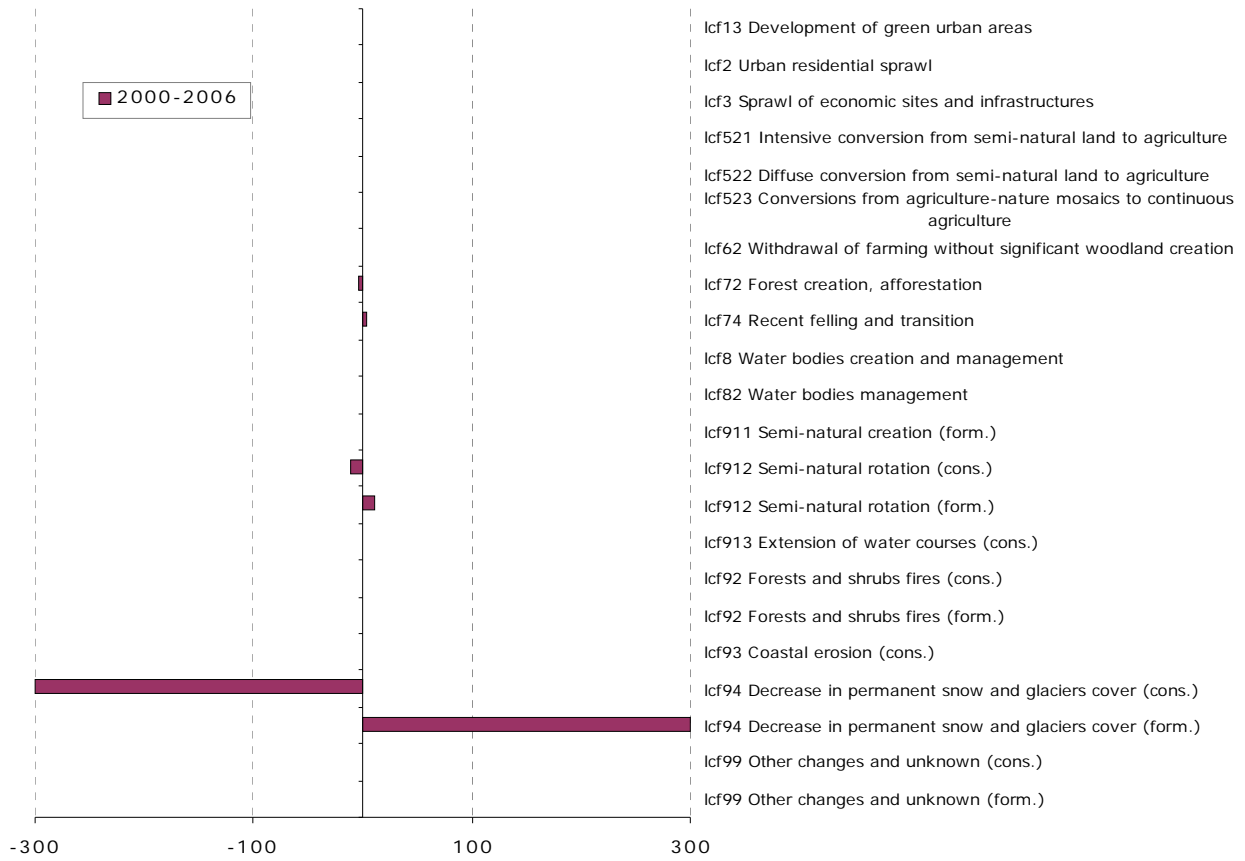
11.42. Main trends in wetlands & water consumption/formation 2000-2006 [ha/year]



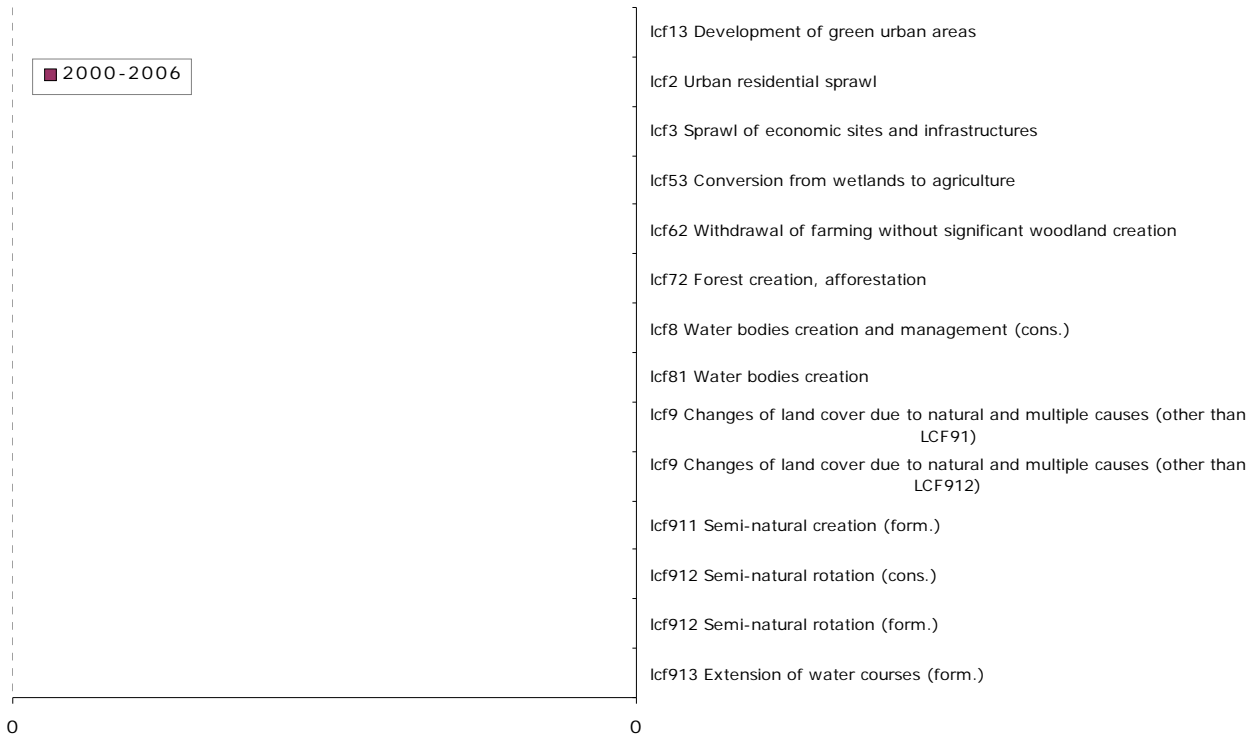
11.43. Mean annual conversions of forest & other woodland [ha/year]



12.44. Mean annual conversions of dry semi-natural LC [ha/year]



12.45. Mean annual conversions of wetlands and water LC [ha/year]



Switzerland

