

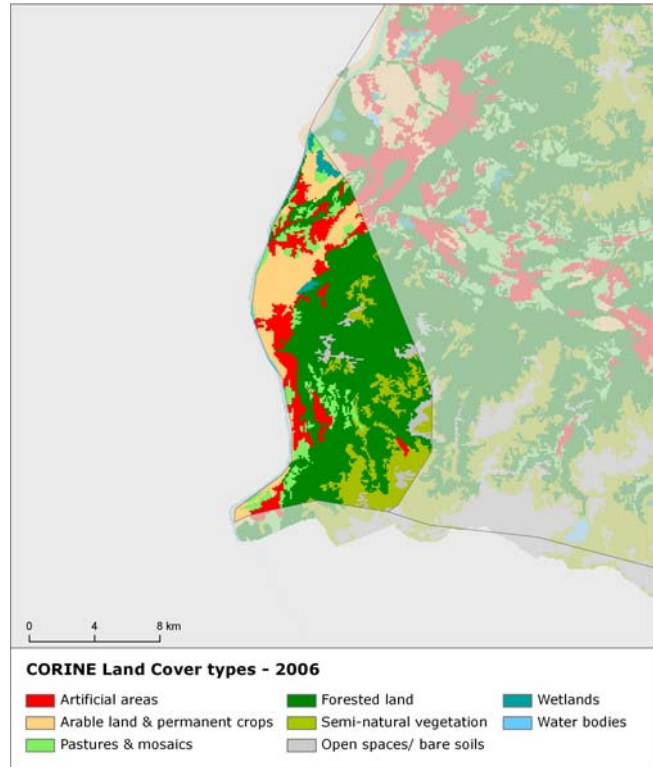
# Liechtenstein

## Land cover 2006

### Overview of land cover & change 2000-2006

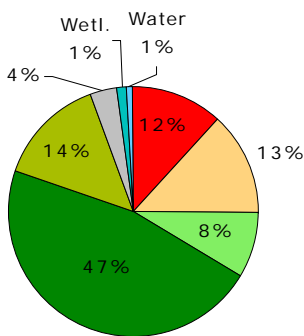
Liechtenstein with a size of about 160 qkm is located between Switzerland and Austria. Western part of the country is covered by mountainous landscape of the Alps, eastern and northern part is located in the valley of river Rhein. Most of the country area is covered by forests or semi-natural vegetation, agricultural and artificial surfaces are located mainly in the northern and eastern part of the country.

Within the period 2000-2006, there were no changes in land cover detected, identifiable using CLC change mapping.

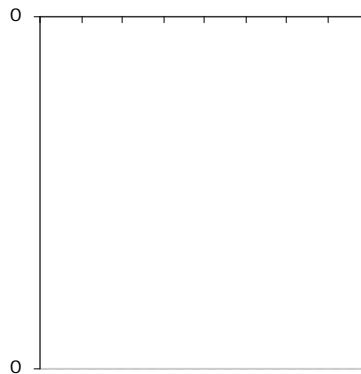


Note: The results presented here are based on a change analysis of 44 land cover types mapped consistently on a 1:100.000 scale across Europe over almost two decades 1990-2006 - see Corine land cover (CLC) programme for details. Number of years between CLC2000-CLC2006 data for Liechtenstein: 6

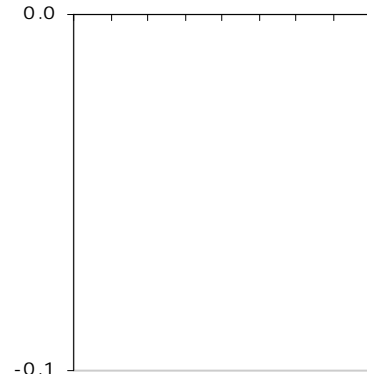
1.1. Land cover 2006 [% of total]



1.2. Net change in land cover 2000-2006 [ha]



1.3. Net change in land cover [% of initial year 2000]



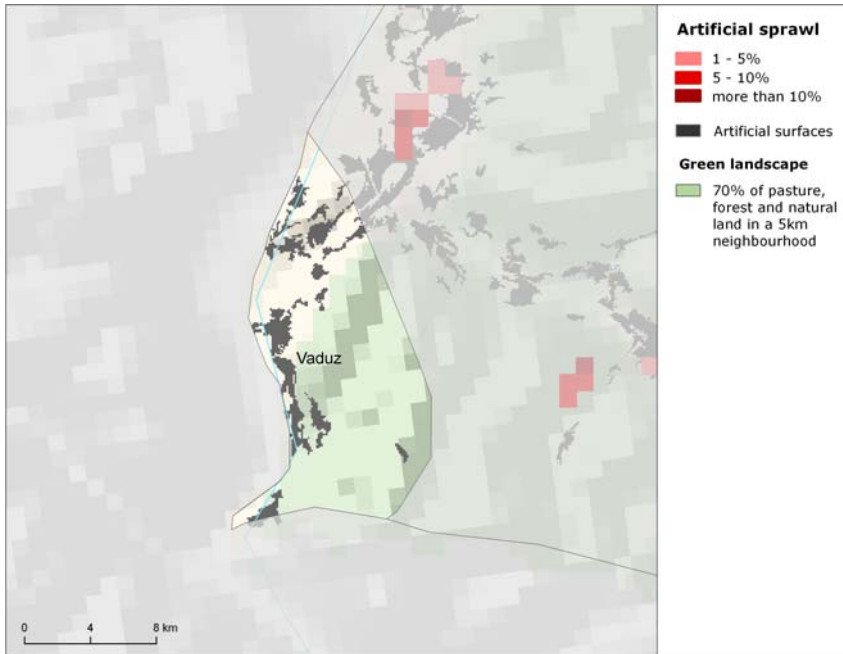
- Artificial areas
- Arable land & permanent crops
- Pastures & mosaics
- Forested land
- Semi-natural vegetation
- Open spaces/ bare soils
- Wetlands
- Water bodies

### Summary balance table 2000-2006

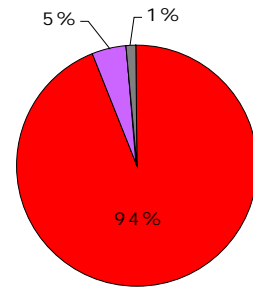
	Artificial areas	Arable land & permanent crops	Pastures & mosaics	Forested land	Semi-natural vegetation	Open spaces/ bare soils	Wetlands	Water bodies	TOTAL [hundreds ha]
Land cover 2000	19	20	13	73	22	6	2	1	156
Consumption of initial LC	0	0	0	0	0	0	0	0	0
Formation of new LC	0	0	0	0	0	0	0	0	0
<b>Net Formation of LC</b>	<b>0</b>	<b>0</b>	<b>0</b>	<b>0</b>	<b>0</b>	<b>0</b>	<b>0</b>	<b>0</b>	<b>0</b>
Net formation as % of initial year	0.0	0.0	0.0	0.0	0.0	0.0	0.0	0.0	0.0
<b>Total turnover of LC</b>	<b>0</b>	<b>0</b>	<b>0</b>	<b>0</b>	<b>0</b>	<b>0</b>	<b>0</b>	<b>0</b>	<b>0</b>
Total turnover as % of initial year	0.0	0.0	0.0	0.0	0.0	0.0	0.0	0.0	0.0
Land cover 2006	19	20	13	73	22	6	2	1	156

# Liechtenstein

## Artificial areas



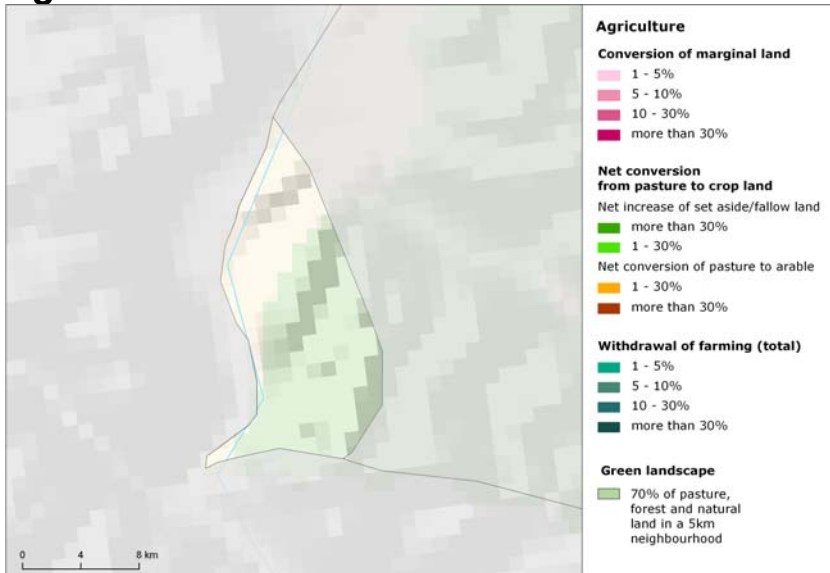
3.9. Artificial surfaces 2006 [% of total area]



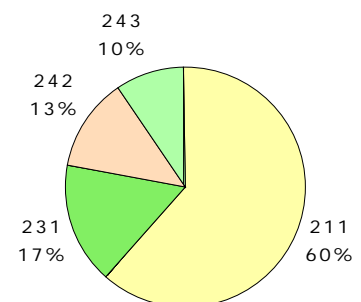
## Artificial areas

Artificial surfaces in Liechtenstein consist mostly of residential structures, with only low share of commercial/industrial units and mine/dump sites.

## Agriculture



4.12. Agricultural areas 2006 [% of total area]

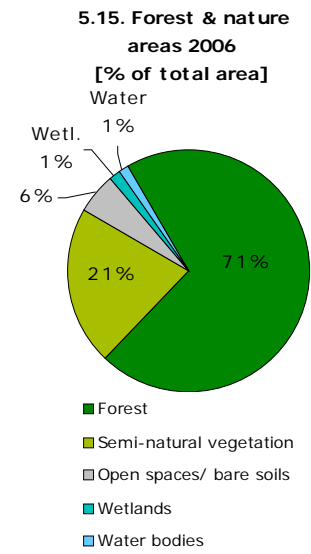


## Agriculture

Arable land is the dominant agricultural class in Liechtenstein, the rest of agricultural areas is composed of pastures, complex cultivation patterns and agricultural land with significant areas of natural vegetation.

# Liechtenstein

## Forest & nature



## Forest and nature

Forested areas are the predominant (71% share on total natural land cover) represented mostly by coniferous or mixed forest.. The rest of natural land is covered mainly by natural grasslands or sparsely vegetated areas.

**Liechtenstein**

**Annex: Land cover flows and trends**