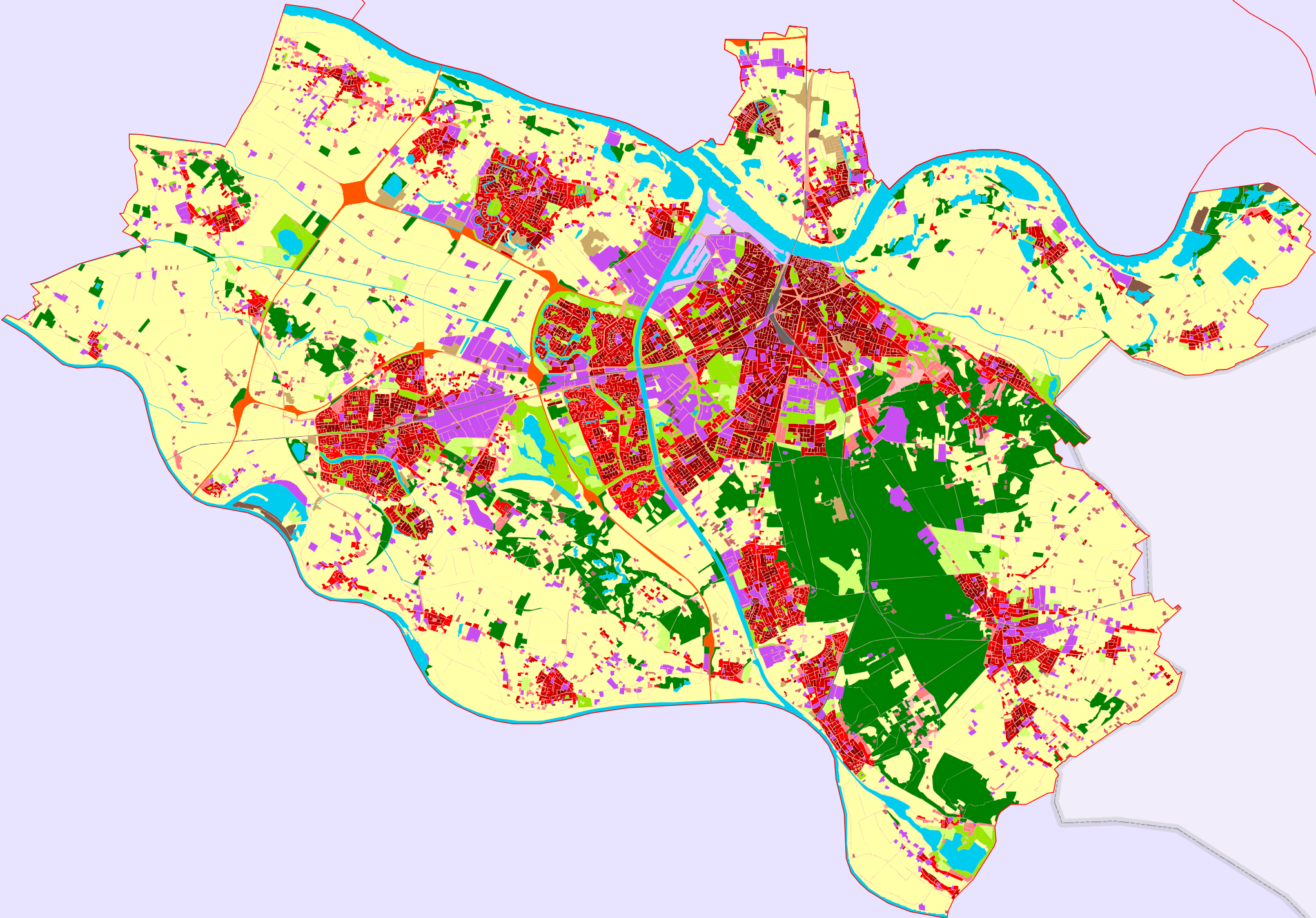
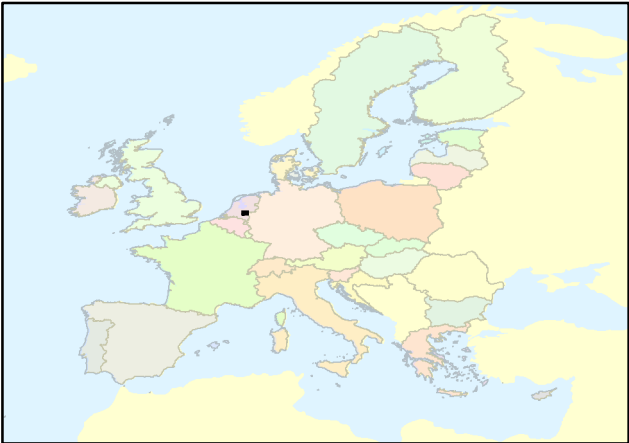


URBAN ATLAS - NL013L-Nijmegen



- Legend**
- 11100: Continuous Urban fabric (S.L. > 80%)
 - 11210: Discontinuous Dense Urban Fabric (S.L.: 50% - 80%)
 - 11220: Discontinuous Medium Density Urban Fabric (S.L.: 30% - 50%)
 - 11230: Discontinuous Low Density Urban Fabric (S.L.: 10% - 30%)
 - 11240: Discontinuous very low density urban fabric (S.L. < 10%)
 - 11300: Isolated Structures
 - 12100: Industrial, commercial, public, military and private units
 - 12210: Fast transit roads and associated land
 - 12220: Other roads and associated land
 - 12230: Railways and associated land
 - 12300: Port areas
 - 12400: Airports
 - 13100: Mineral extraction and dump sites
 - 13300: Construction sites
 - 13400: Land without current use
 - 14100: Green urban areas
 - 14200: Sports and leisure facilities
 - 20000: Agricultural, semi-natural and wetland areas
 - 30000: Forest
 - 50000: Water

févr 12, 2010



0 10 Km

ETRS_1989_LAEA

