

Reported information under Regulation (EC) No 166/2006 on the establishment of a European Pollutant Release and Transfer Register Information on the database structure and use

Database version 17



Cover design: EEA

Cover photo: Jorge Franganillo, Creative Commons Attribution 2.0 Generic (<https://goo.gl/rqHYk6>)

Layout: EEA

Acknowledgments

The dataflow is managed by Bastian Zeiger (EEA). Please refer to him for further enquiries (bastian.zeiger@eea.europa.eu).

About the database

This database contains facility-by-facility data on releases and transfers of pollutants and waste covered by Regulation (EC) No 166/2006 on the establishment of a European Pollutant Release and Transfer Register (E-PRTR Regulation) for the years 2007 to 2017. For facilities involved in activities listed in Annex I of the E-PRTR Regulation, the data include releases of pollutants listed in Annex II to air, water and land (above Annex II threshold releases only) as well as off-site transfers in waste-water. The data further includes off-site transfers of hazardous waste (above Article 5 thresholds only).

Table of contents

| | |
|------------------------------------------------------|----------|
| Acknowledgments | 2 |
| About the database | 2 |
| Table of contents | 2 |
| 1 Content of the EEA dataservice entry | 3 |
| 2 User friendly tables with yearly data | 3 |
| 3 Complete MS Access database | 3 |
| The data model | 4 |
| Tables and fields..... | 6 |
| Queries | 11 |
| Metadata | 11 |

1 Content of the EEA dataservice entry



The European Pollutant Release and Transfer Register (E-PRTR) is a web-based register established by Regulation (EC) No 166/2006 which implements the UNECE PRTR Protocol, signed in May 2003 in Kiev.

European data Metadata


European Pollutant Release and Transfer Register (E-PRTR) - Microsoft Access database and text format

E-PRTR data covering reporting for 2007 to 2015 by EU Member States, Iceland, Liechtenstein, Norway, Serbia and Switzerland. The Access file represents the status of the E-PRTR database as of May 2017. It provides corrected data from many countries within the period 2007 to 2015. Refer to table below under "Additional information" for the specific details of the countries and years that have been updated as compared to version 8.

[+] Show table definition

-  **E-PRTR_database_v11_csv.zip** (ZIP archive)
 - 50.35 MB [Download file](#)
-  **E-PRTR_database_v11_mdb.zip** (ZIP archive)
 - 93.68 MB [Download file](#)

European Pollutant Release and Transfer Register (E-PRTR) - KMZ format


-  **EPRTTR_facilities_v11.kmz** (ZIP archive)
 - 2.37 MB [Download file](#)

Database structure and use information

-  **EPRTTR_database_metadata_v11.pdf** (PDF document)
 - 946.87 KB [Download file](#)

User-friendly tables in Excel

These tables, in Microsoft Excel format, offer an extract of the most relevant data fields in independent sheets for each year.

-  **E-PRTR_database_extract_v11_xlsx.zip** (ZIP archive)
 - 98.64 MB [Download file](#)

CSV files containing the entire database

Microsoft Access Database

KMZ file to present facility data on a map

This metadata document

User friendly extracts in Microsoft Excel format

2 User friendly tables with yearly data

The user-friendly tables are an extract of the database containing the most relevant fields and provided in Excel format. They correspond to the queries in the MS Access database mentioned below.

This presentation of the data is meant to help those users who are not familiar with Microsoft Access.

3 Complete MS Access database

The European dataset is provided in its complete version in Microsoft Access data format. This section outlines the structure of the data, the interpretation of the data fields and the metadata of the file.

The data model

The database consists of 10 tables. Its structure is shown in the figure below.

The FACILITYREPORT table contains basic data on each facility reported by each country. This includes contact details and exact location, information about the competent authority and other facility level data. The ACTIVITY provides information about the activities reported for each facility. The POLLUTANTRELEASEANDTRANSFERREPORT table contains additional information about the delivery on the EEA's Central Data Repository (CDR) including the reporting year. FACILITYID_CHANGES contains information about facilities that have changed their internal FacilityID (a unique ID for each facility in the dataset) over time for traceability.

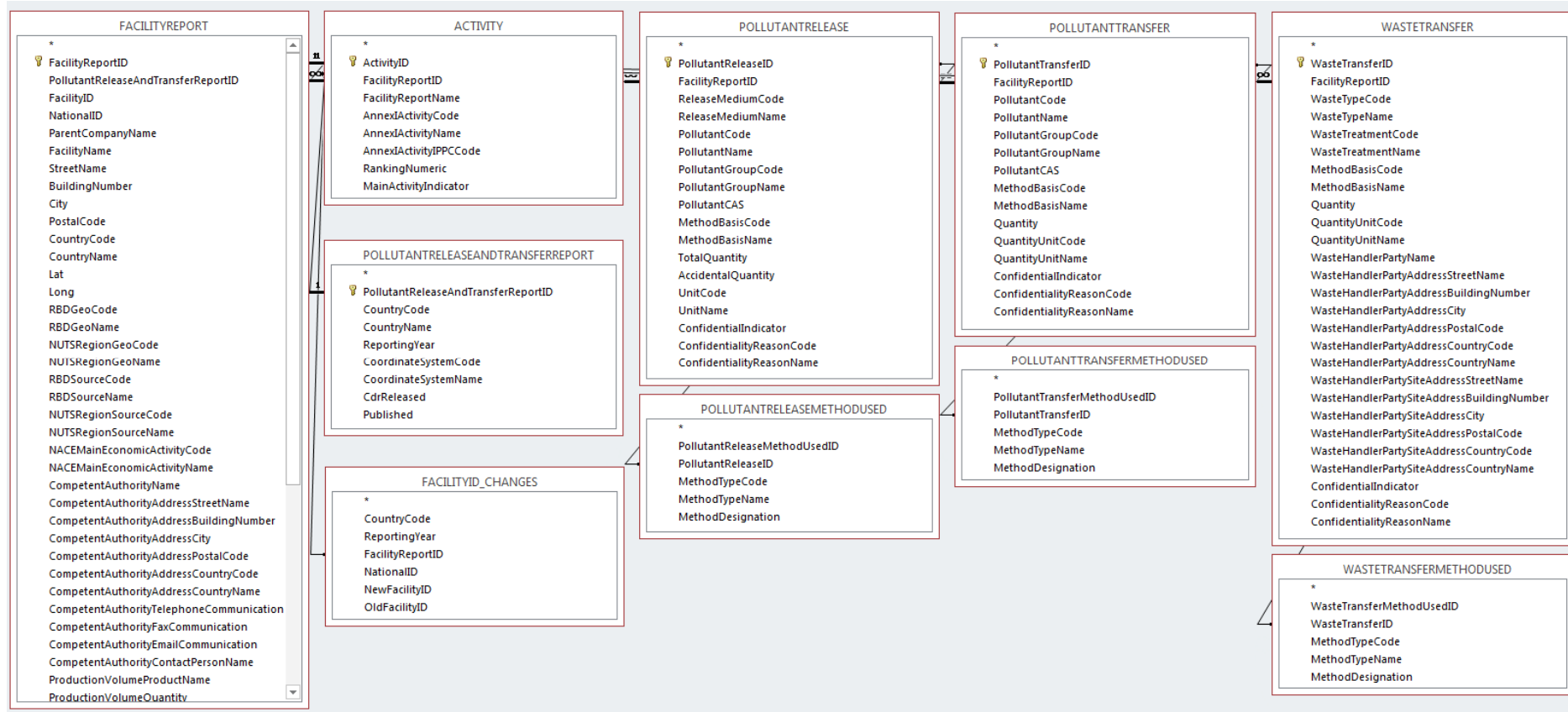
The POLLUTANTRELEASE table contains data on each pollutant release to air, water and land reported in all facility reports including the type of pollutant and quantity released. The POLLUTANTRELEASEMETHODUSED table contains data on release methods for each release.

The POLLUTANTTRANSFER table then contains data on each pollutant transfer in waste water reported in all facility reports including the type of pollutant and quantity transferred. The POLLUTANTTRANSFERMETHODUSED again contains data on the transfer method for each transfer reported.

The WASTETRANSFER table contains data on transfers of waste reported in each facility report including the type of waste and quantity transferred as well as information about whether the waste was transferred out of the country or within. The WASTETRANSFERMETHODUSED table contains data on the transfer methods used.

All fields in the various tables are described below.

Figure: Structure of the E-PRTR database



Tables and fields

The E-PRTR database contains the following tables and fields:

Fields in FACILITYREPORT

| Field | Data type | Description |
|-------------------------------------|---------------|-------------------------------------------------------------------------------------------------------------------------------------------------------|
| FacilityReportID | Int | Primary key. Required. |
| PollutantReleaseAndTransferReportID | Int | Identifies the report that the facility report is a part of. Required. References table FULL_POLLUTANTRELEASEANDTRANSFERR EPORT. |
| FacilityID | Int | Unique identification of the facility. Required. |
| NationalID | nvarchar(255) | National Identification of the facility. Required. |
| ParentCompanyName | nvarchar(255) | Name of the parent company, i.e. the company that owns or controls the company operating the facility. Required unless confidentiality is claimed. |
| FacilityName | nvarchar(255) | Name of the facility (operator or owner). |
| StreetName | nvarchar(255) | The street name of the facility. |
| BuildingNumber | nvarchar(255) | The building number of the facility. |
| City | nvarchar(255) | Name of city, where facility is located |
| PostalCode | nvarchar(50) | The postal code of the facility. |
| CountryCode | nvarchar(255) | Country code |
| CountryName | nvarchar(255) | Country name |
| Lat | Float | Latitude |
| Long | Float | Longitude |
| RBDGeoCode | nvarchar(255) | Identifies the river basin district code computed by geo-coding |
| RBDGeoName | nvarchar(255) | Identifies the river basin district name computed by geo-coding |
| NUTSRegionGeoCode | nvarchar(255) | Identifies the NUTS region code at level 2 computed by geo-coding |
| NUTSREGIONGeoName | nvarchar(255) | Identifies the NUTS region name at level 2 computed by geo-coding |
| RBDSourceCode | nvarchar(255) | Identifies the river basin district code as reported by the RS |
| RBDSourceName | nvarchar(255) | Identifies the river basin district name as reported by the RS |
| NUTSRegionSourceCode | nvarchar(255) | Identifies the NUTS region code as reported by the RS |
| NUTSREGIONSourceName | nvarchar(255) | Identifies the NUTS region name as reported by the RS |
| NACEMainEconomicActivityCode | nvarchar(255) | Main economic activity Code for NACE reported as NACE Code |
| NACEMainEconomicActivityName | nvarchar(255) | Main economic activity Name for NACE reported as NACE Code |
| MainEconomicActivityNameSource | nvarchar(255) | Main economic activity Name reported as text |
| CompetentAuthorityName | nvarchar(255) | Name of competent authority party |
| CompetentAuthorityAddressStreetName | nvarchar(255) | Street of competent authority party |

| | | |
|-----------------------------------------|---------------|--------------------------------------------------------------------------------------------------------------------------------|
| CompetentAuthorityAddressBuildingNumber | nvarchar(255) | Building number of competent authority party |
| CompetentAuthorityAddressCity | nvarchar(255) | City of competent authority party |
| CompetentAuthorityAddressPostalCode | nvarchar(255) | Postal code of competent authority party |
| CompetentAuthorityAddressCountryCode | nvarchar(255) | Country code of competent authority party |
| CompetentAuthorityAddressCountryName | nvarchar(255) | Country name of competent authority party |
| CompetentAuthorityTelephoneNumber | nvarchar(255) | Telephone number of competent authority party |
| CompetentAuthorityFaxCommunication | nvarchar(255) | Fax number of competent authority party |
| CompetentAuthorityEmailCommunication | nvarchar(255) | Email of competent authority party |
| CompetentAuthorityContactPersonName | nvarchar(255) | Contact person at competent authority party |
| ProductionVolumeProductName | nvarchar(255) | Name of primary product |
| ProductionVolumeQuantity | float | Production quantity of primary product |
| ProductionVolumeUnitCode | nvarchar(255) | Unit code of quantity. |
| ProductionVolumeUnitName | nvarchar(255) | Unit name of quantity. |
| TotalIPPCInstallationQuantity | int | The total number of IPPC installations covered by the facility. |
| OperatingHours | int | The number of operating hours in reporting year |
| TotalEmployeeQuantity | int | Number of employees. |
| WebsiteCommunication | nvarchar(255) | The website address of Facility. |
| PublicInformation | nvarchar(max) | Textual information. Additional information to be published on web site as-is (e.g. e-mail, contact person etc.). |
| ConfidentialIndicator | bit | Indicates if confidentiality for mandatory data is claimed or not. Required. |
| ConfidentialityReasonCode | nvarchar(255) | Identifies the reason Code for confidentiality. Required if confidentiality is claimed for mandatory data. |
| ConfidentialityReasonName | nvarchar(255) | Identifies the reason Name for confidentiality. Required if confidentiality is claimed for mandatory data. |
| ProtectVoluntaryData | bit | Indicates if voluntary data should be protected or not |
| RemarkText | nvarchar(max) | Textual remark, e.g. information in changes of the history of the facility, elaboration on the reason for confidentiality etc. |
| MainIASectorCode | nvarchar(255) | Sector Code of main industrial activity |
| MainIASectorName | nvarchar(255) | Sector Name of main industrial activity |
| MainIAActivityCode | nvarchar(255) | Activity Code of main industrial activity |
| MainIAActivityName | nvarchar(255) | Activity Name of main industrial activity |
| MainIASubActivityCode | nvarchar(255) | Subactivity Code of main industrial activity |
| MainIASubActivityName | nvarchar(255) | Subactivity Name of main industrial activity |

Fields in ACTIVITY

| Field | Data type | Description |
|------------|-----------|---------------------------|
| ActivityID | int | Primary key. Required. |

| | | |
|------------------------|---------------|--------------------------------------------------------------------------|
| FacilityReportID | nvarchar(255) | Facility report unique identifier. References table FULL_FACILITYREPORT. |
| FacilityReportName | float | Name of reporting facility |
| AnnexIActivityCode | nvarchar(255) | Industrial activity code |
| AnnexIActivityName | nvarchar(255) | Industrial activity name |
| AnnexIActivityIPPCCode | nvarchar(255) | Industrial activity IPPC code |
| RankingNumeric | Int | Importance ranking of respective activity |
| MainActivityIndicator | Bit | Indicator whether this activity is the facilities main activity |

Fields in POLLUTANTRELEASEANDTRANSFERREPORT

| Field | Data type | Description |
|-------------------------------------|---------------|---------------------------------------------------------------------------------------|
| PollutantReleaseAndTransferReportID | Int | Primary key. Required. |
| CountryCode | nvarchar(255) | The RS Code reporting. Required. |
| CountryName | nvarchar(255) | The RS Name reporting. Required. |
| ReportingYear | Int | The calendar year of which data on releases and transfers must be gathered. Required. |
| CoordinateSystemCode | nvarchar(255) | The coordinate system code used in reporting of coordinates. |
| CoordinateSystemName | nvarchar(255) | The coordinate system name used in reporting of coordinates. |
| CdrReleased | Datetime | The time when the report was released in Reportnet. Required. |
| Published | Datetime | The time when the report was released to public view |

Fields in POLLUTANTRELEASE

| Field | Data type | Description |
|--------------------|---------------|----------------------------------------------------------------------------------------------------------|
| PollutantReleaseID | Int | Primary key. Required. |
| FacilityReportID | Int | Identifies the facility report that the data belongs to. Required. References table FULL_FACILITYREPORT. |
| ReleaseMediumCode | nvarchar(255) | Identifies the environmental medium (air, water etc) code. |
| ReleaseMediumName | Nvarchar(255) | Identifies the environmental medium name. |
| PollutantCode | Nvarchar(255) | Identifies pollutant code |
| PollutantName | Nvarchar(255) | Identifies pollutant name |
| PollutantGroupCode | Nvarchar(255) | Identifies pollutant group code |
| PollutantGroupName | Nvarchar(255) | Identifies pollutant group name |
| PoluttantCAS | Nvarchar(255) | Pollutant CAS description |
| MethodBasisCode | Nvarchar(255) | Identifies the method basis code of the main method used (M/C/E). |
| MethodBasisName | Nvarchar(255) | Identifies the method basis name of the main method used. |
| TotalQuantity | Float | Total quantity including accidental quantity [kg/year]. |

| | | |
|---------------------------|---------------|---------------------------------------------------------------------------------------------------------------|
| AccidentalQuantity | Float | Accidental quantity [t/year]. |
| UnitCode | Nvarchar(255) | Identifies the unit code of the quantity |
| UnitName | Nvarchar(255) | Identifies the unit name of the quantity |
| ConfidentialIndicator | Bit | Indicates if confidentiality is claimed. Required. |
| ConfidentialityReasonCode | Nvarchar(255) | Identifies the reason code for confidentiality. Required if confidentiality is claimed for mandatory data. |
| ConfidentialityReasonName | Nvarchar(255) | Identifies the reason name for confidentiality. Required if confidentiality is claimed for mandatory data. |
| RemarkText | Nvarchar(max) | Textual remark, e.g. elaboration on the reason for confidentiality. |

Fields in POLLUTANTRELEASEMETHODUSED

| Field | Data type | Description |
|------------------------------|---------------|----------------------------------------------------------------------------------------------------------------|
| PollutantReleaseMethodUsedID | Int | Primary key. Required. |
| PollutantReleaseID | Int | Identifies the pollutant report that the data belongs to. Required. References table FULL_POLLUTANTRELEASE. |
| MethodTypeCode | nvarchar(255) | Identifies the method type code |
| MethodTypeName | Nvarchar(255) | Identifies the method type name |
| MethodDesignation | Nvarchar(255) | Identifies the method designation |

Fields in POLLUTANTTRANSFER

| Field | Data type | Description |
|---------------------------|---------------|---------------------------------------------------------------------------------------------------------------|
| PollutantTransferID | Int | Primary key. Required. |
| FacilityReportID | Int | Identifies the facility report that the data belongs to. Required. References table FULL_FACILITYREPORT. |
| PollutantCode | Nvarchar(255) | Identifies pollutant code |
| PollutantName | Nvarchar(255) | Identifies pollutant name |
| PollutantGroupCode | Nvarchar(255) | Identifies pollutant group code |
| PollutantGroupName | Nvarchar(255) | Identifies pollutant group name |
| PollutantCAS | Nvarchar(255) | Pollutant CAS description |
| MethodBasisCode | Nvarchar(255) | Identifies the method basis code of the main method used (M/C/E). |
| MethodBasisName | Nvarchar(255) | Identifies the method basis name of the main method used. |
| Quantity | Float | Total quantity of reported pollutant [kg/year] |
| QuantityUnitCode | Nvarchar(255) | Identifies the unit code of the quantity |
| QuantityUnitName | Nvarchar(255) | Identifies the unit name of the quantity |
| ConfidentialIndicator | Bit | Indicates if confidentiality is claimed. Required. |
| ConfidentialityReasonCode | Nvarchar(255) | Identifies the reason code for confidentiality. Required if confidentiality is claimed for mandatory data. |
| ConfidentialityReasonName | Nvarchar(255) | Identifies the reason name for confidentiality. Required if confidentiality is claimed for mandatory data. |
| RemarkText | Nvarchar(max) | Textual remark, e.g. elaboration on the reason for confidentiality. |

Fields in POLLUTANTTRANSFERMETHODUSED

| Field | Data type | Description |
|-------|-----------|-------------|
|-------|-----------|-------------|

| | | |
|-------------------------------|---------------|-------------------------------------------------------------------------------------------------------------|
| PollutantTransferMethodUsedID | Int | Primary key. Required. |
| PollutantTransferID | Int | Identifies the pollutant report that the data belongs to. Required. References table FULL_POLLUTANTTRANSFER |
| MethodTypeCode | nvarchar(255) | Identifies the method type code |
| MethodTypeName | Nvarchar(255) | Identifies the method type name |
| MethodDesignation | Nvarchar(255) | Identifies the method designation |

Fields in WASTETRANSFER

| Field | Data type | Description |
|--------------------------------------------|---------------|-------------------------------------------------------------------------------------------------------------------------------------------------|
| WasteTransferID | Int | Primary key. Required. |
| FacilityReportID | Int | Identifies the facility report that the data belongs to. Required. References table FULL_FACILITYREPORT. |
| WasteTypeCode | Nvarchar(255) | Identifies the type of waste code (NON-HW, HWIC, HWOC etc.).Required. |
| WasteTypeName | Nvarchar(255) | Identifies the waste type name (non hazardous, hazardous within country etc.). |
| WasteTreatmentCode | Nvarchar(255) | Identifies the waste treatment code (R, D). Required unless confidentiality is claimed. |
| WasteTreatmentName | Nvarchar(255) | Identifies the waste treatment operation name (recovery or disposal). |
| MethodBasisCode | Nvarchar(255) | Identifies the basis code of the main method used (M/C/E). Required unless confidentiality is claimed. |
| MethodBasisName | Nvarchar(255) | Identifies the basis name of the main method used. |
| Quantity | Float | Quantity [t/year] Required unless confidentiality is claimed. |
| QuantityUnitCode | Nvarchar(255) | Identifies the unit code of the quantity (Must correspond to ton) Required unless confidentiality is claimed. |
| QuantityUnitName | Nvarchar(255) | Identifies the unit name of the quantity. |
| WasteHandlerPartyName | Nvarchar(255) | Identifies the recoverer/disposer of the waste. Required for transfer of hazardous waste outside the country unless confidentiality is claimed. |
| WasteHandlerPartyAddressStreetName | Nvarchar(255) | The street name of the WHP |
| WasteHandlerPartyAddressBuildingNumber | Nvarchar(255) | The building number of the WHP |
| WasteHandlerPartyAddressCity | Nvarchar(255) | Name of city, where WHP is located |
| WasteHandlerPartyAddressPostalCode | Nvarchar(50) | The postal code of the WHP |
| WasteHandlerPartyAddressCountryCode | Nvarchar(255) | Country code of WHP |
| WasteHandlerPartyAddressCountryName | Nvarchar(255) | Country name of WHP |
| WasteHandlerPartySiteAddressStreetName | Nvarchar(255) | Site street name of the WHP |
| WasteHandlerPartySiteAddressBuildingNumber | Nvarchar(255) | Site building number of the WHP |
| WasteHandlerPartySiteAddressCity | Nvarchar(255) | Name of city, where WHP site is located |
| WasteHandlerPartySiteAddressPostalCode | Nvarchar(50) | The postal code of the WHP site |
| WasteHandlerPartySiteAddressCountryCode | Nvarchar(255) | Country code of WHP site |

| | | |
|-----------------------------------------|---------------|-----------------------------------------------------------------------------------------|
| WasteHandlerPartySiteAddressCountryName | Nvarchar(255) | Country name of WHP site |
| ConfidentialIndicator | Bit | Indicates if confidentiality is claimed. Required. |
| ConfidentialityReasonCode | Nvarchar(255) | Identifies the reason code for confidentiality. Required if confidentiality is claimed. |
| ConfidentialityReasonName | Nvarchar(255) | Identifies the reason name for confidentiality. |
| RemarkText | nvarchar(max) | Textual remark, e.g. elaboration on the reason for confidentiality. |

Fields in WASTETRANSMETHODUSED

| Field | Data type | Description |
|---------------------------|---------------|---------------------------------------------------------------------------------------------------------------------|
| WasteTransferMethodUsedID | Int | Primary key. Required. |
| WasteTransferID | Int | Identifies the waste transfer report that the data belongs to. Required. References table FULL_WASTETRANSMETHODUSED |
| MethodTypeCode | nvarchar(255) | Identifies the method type code |
| MethodTypeName | Nvarchar(255) | Identifies the method type name |
| MethodDesignation | Nvarchar(255) | Identifies the method designation |

Queries

The database also contains queries to read the most important data on pollutant releases, pollutant transfers and waste transfers from the database.

Metadata

Reporting obligation: E-PRTR data reporting - <http://rod.eionet.europa.eu/obligations/538>

Temporal coverage: 2007 – 2017

Geographic coverage: Austria, Belgium, Bulgaria, Croatia (from 2014), Cyprus, Czech Republic, Denmark, Estonia, Finland, France, Germany, Greece, Hungary, Iceland, Ireland, Italy, Latvia, Liechtenstein, Lithuania, Luxembourg, Malta, Netherlands, Norway, Poland, Portugal, Romania, Serbia, Slovakia, Slovenia, Spain, Sweden, Switzerland, United Kingdom.

Units:

Pollutant releases and transfers are reported in kg/year.

Waste transfers are reported in t/year.