



# Test data collection for contaminated sites

European Topic Centre on Soil  
Umweltbundesamt Wien

Gundula Prokop, Georgia Spausta, Pierre Menger

- ⇒ **Background and expectations**
- ⇒ **Summary of the results**
- ⇒ **Conclusions**

# Introduction and background (1)

- In view of fulfilling the EEA environmental indicator approach, appropriate indicators for contaminated sites need to be developed.
- Indicators need to be based on reliable data (real data).
- Wherever data are missing, reliable estimation models need to be applied (estimated data).

# Introduction and background (2)

The ETC/S has chosen two approaches for the EEA indicator approach.

1. Short-term approach: collection of national data on the basis of data updates.
2. Long-term approach:
  - minimum data harmonisation;
  - data collection on a regional basis;
  - data estimation (models).

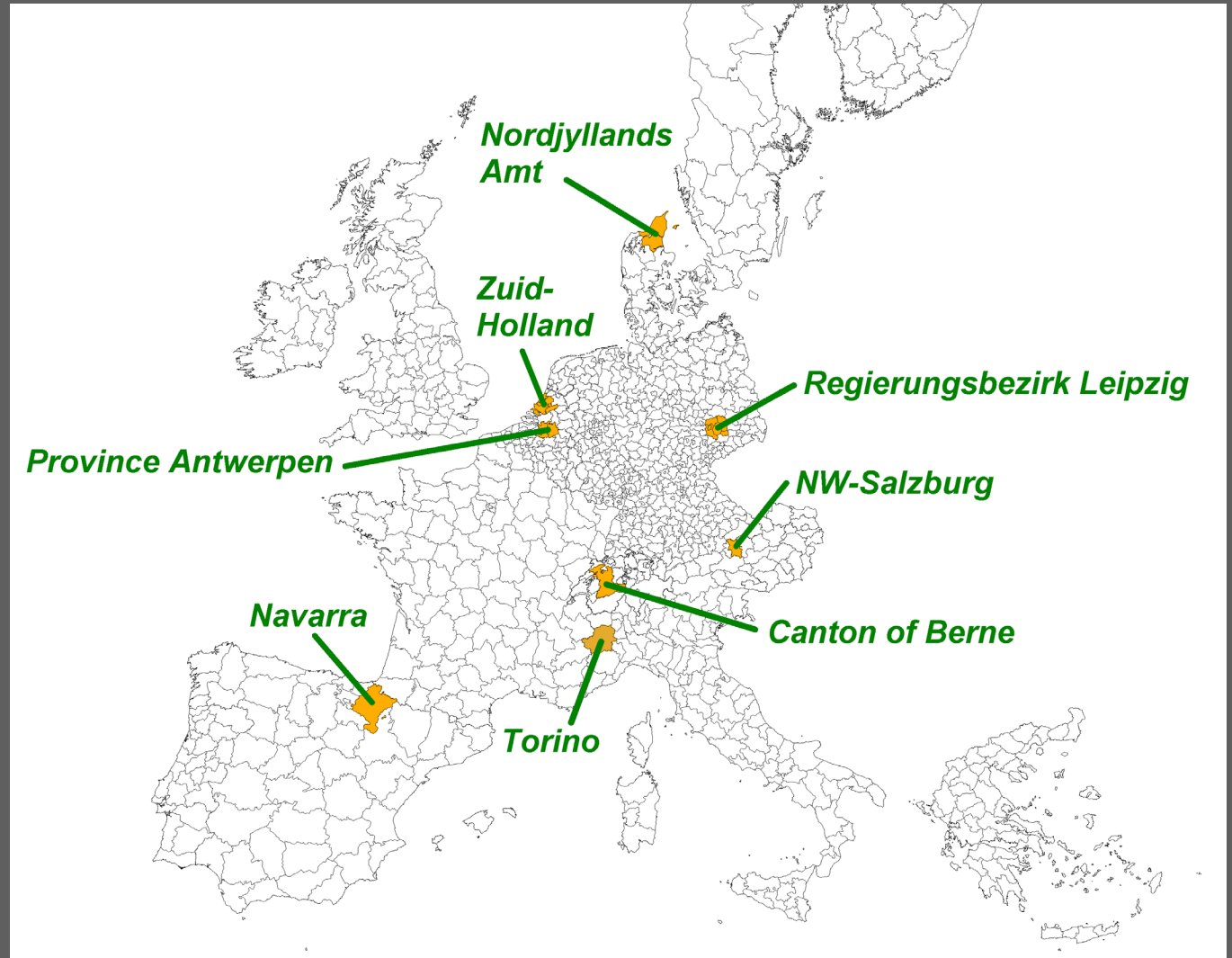
**First step: test data collection in test regions**

## To find out ...

- to which extent real data are available;
- if there is a way to compare data;
- which key data should be collected in the future;
- how we can use real data to match data gaps/which findings are valuable to proceed with data models.

# Participating test regions

- ⇒ Eight participating regions
- ⇒ Some data for the Province of Torino have not been assessed yet



# Population, areas and major cities

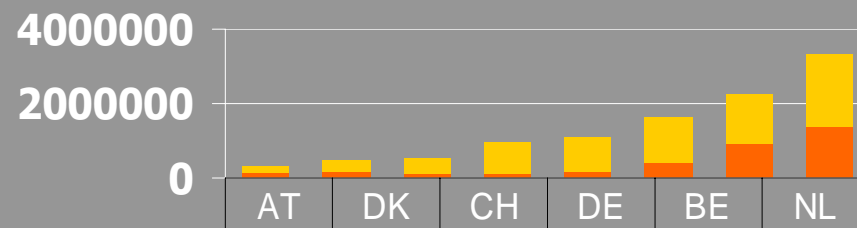
## Test regions: participating countries and regions

	<b>A</b>	<b>B</b>	<b>CH</b>	<b>D</b>	<b>DK</b>	<b>E</b>	<b>I</b>	<b>NL</b>
	<b>Nordwest Salzburg</b>	<b>Prov. Antwerp</b>	<b>Kanton Bern</b>	<b>Regierungsbereich Leipzig</b>	<b>Nordjyllands Amt</b>	<b>Navarra</b>	<b>Prov. Torino</b>	<b>Zuid-Holland</b>
Total pop.	312 500	1 640 966	942 000	1 098 658	490 000	532 836	2 222 265	3 350 000
Total area	1,738	2 868	5 959	4 386	6 173	10 391	6 830	3 440
Cities > 100 000 inhab.	Salzburg	Antwerpen	Bern	Leipzig	Aalborg	Pamplona	Turin	Rotterdam, The Hague, Dordrecht, Leiden, Zoetermee

# General information: area and population

- ⇒ Population densities vary between:
- 86 inhab./km<sup>2</sup> in Navarra;
  - 562 inhab./ km<sup>2</sup> in Zuid-Holland.

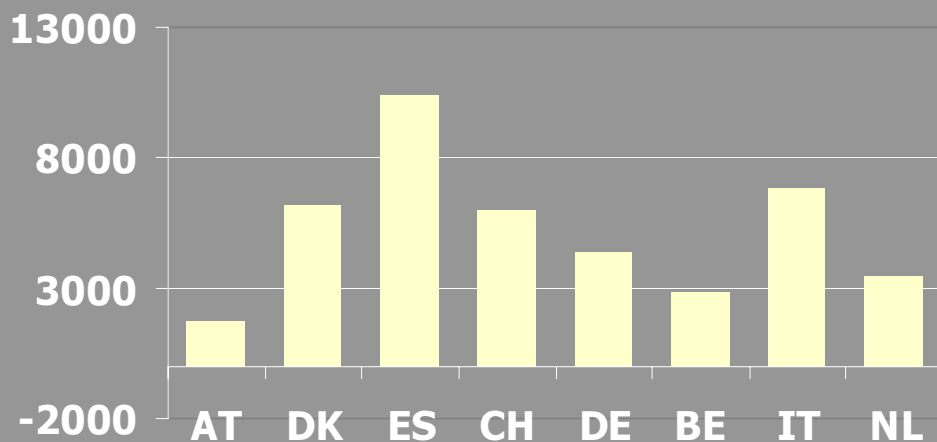
## Population



rest	2E+05	3E+05	8E+05	9E+05	1E+06	2E+06
in cities > 100,000ca	1E+05	2E+05	1E+05	2E+05	4E+05	1E+06

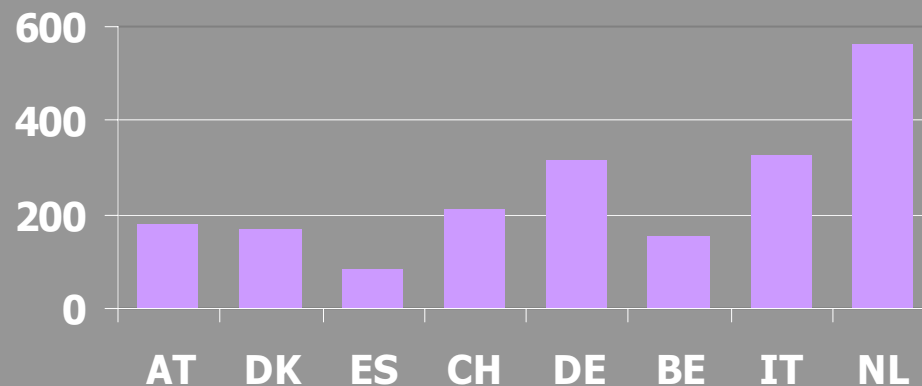
## Areas [km<sup>2</sup>]

Total Area



## Population density

Population Density



# Corine land-use patterns



**Urban patterns**



**Pastures, arable land, etc.**



**Forests**



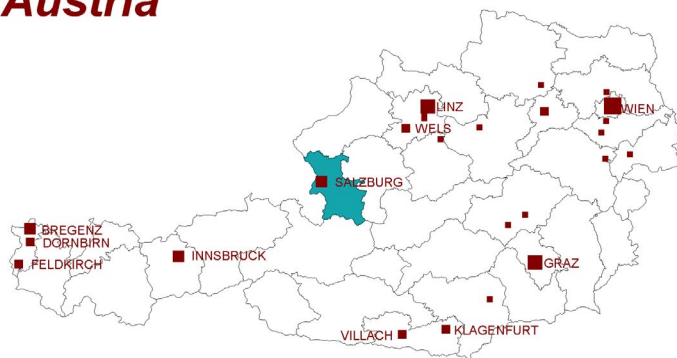
**Marshes, bare rock, etc.**



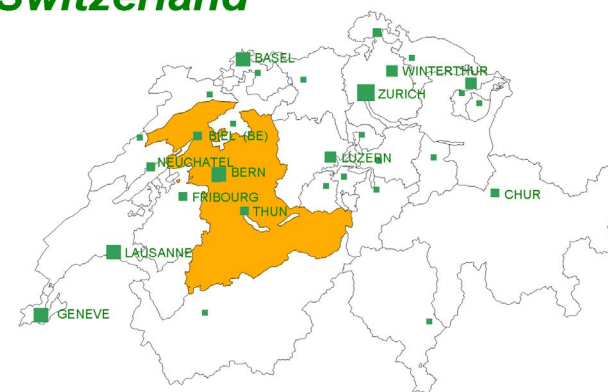
**Water patterns**



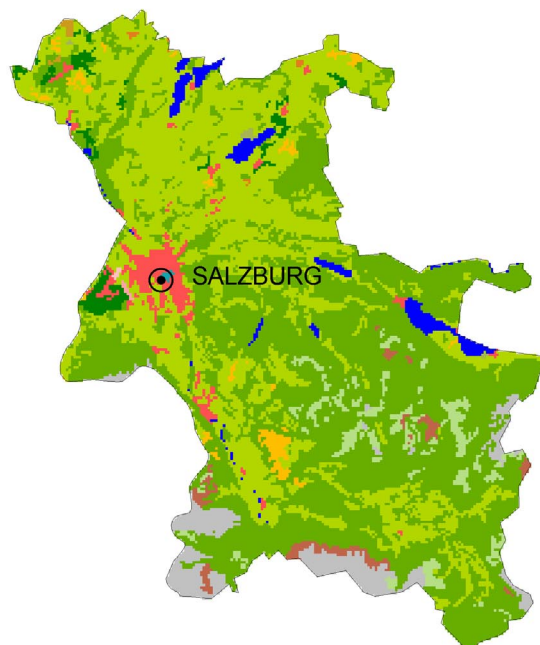
## Austria



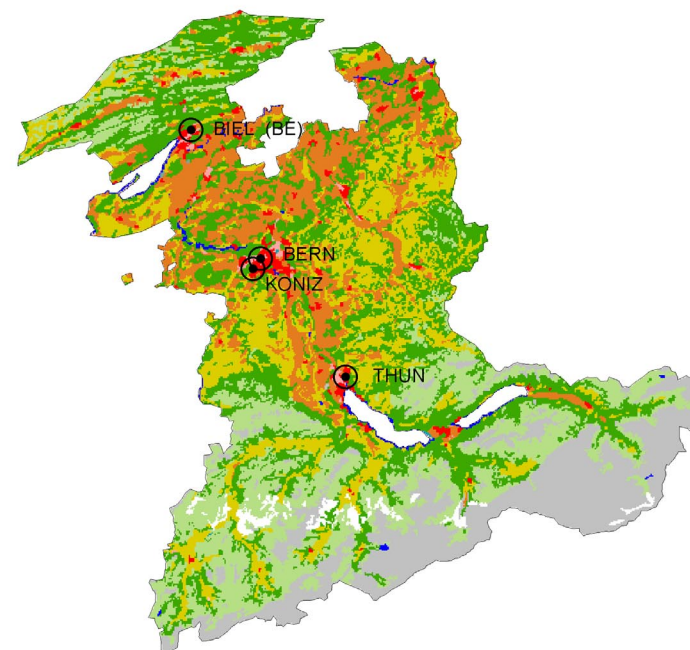
## Switzerland



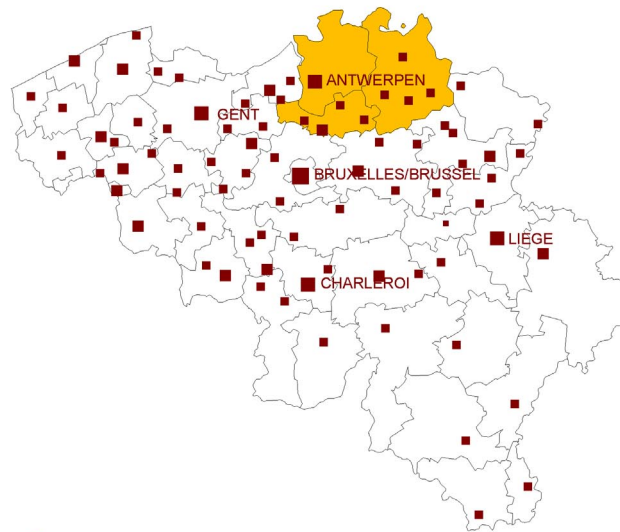
## NW-Salzburg



## Canton of Berne



## Belgium



## Province Antwerpen

