

# **CLC2000 Launch Event**

Brussels 17 Nov 2004

**“ON THE ROAD TO SUSTAINABILITY”**

**CLC as a main tool - Spain**

**Domingo Jiménez-Beltrán**  
**Economic Bureau of the President**  
**(Support from ETC-TE&CNIG)**







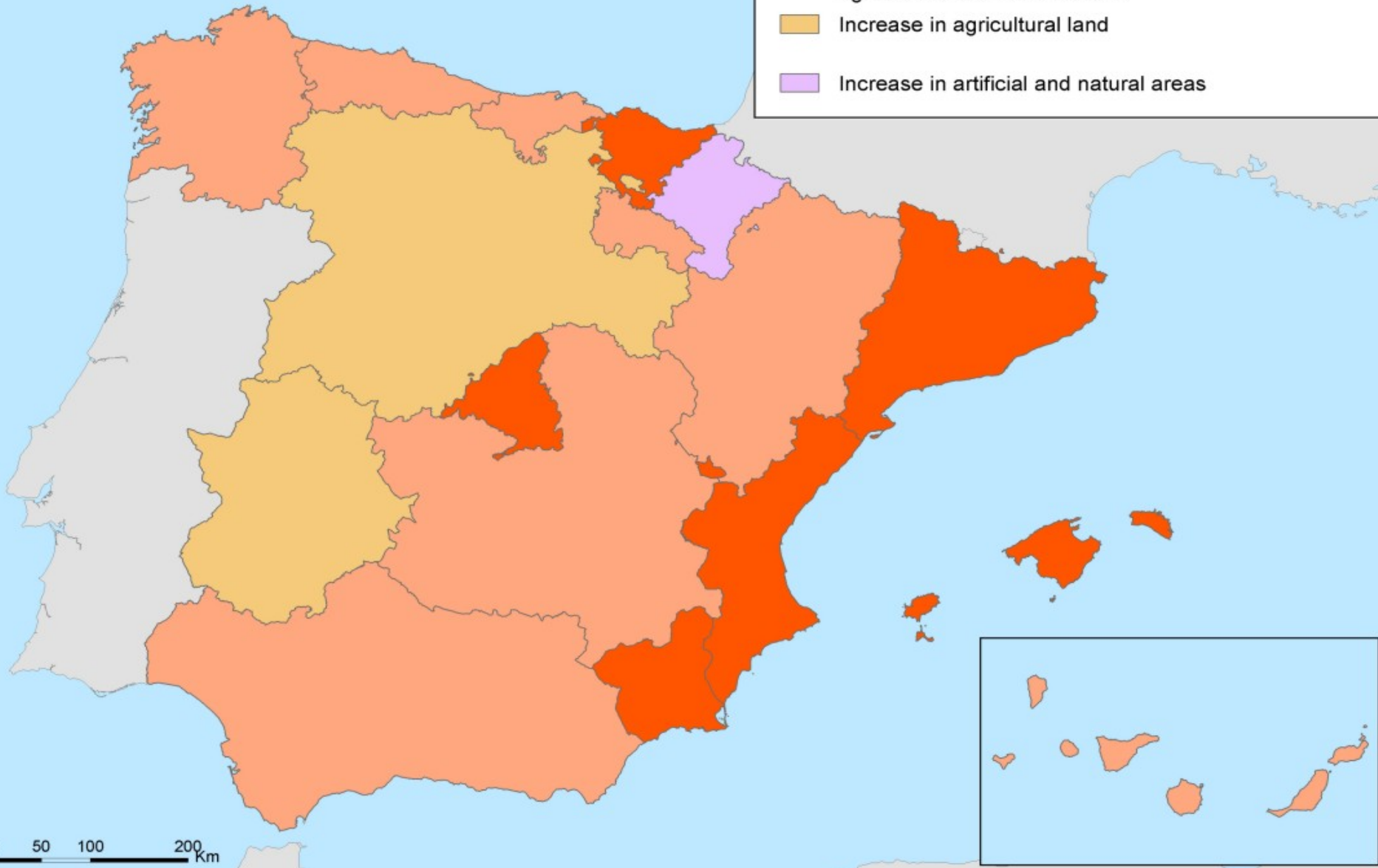
# Making the case for CLC

## Big Challenges for Environmental Sustainability in the EU (and Spain):

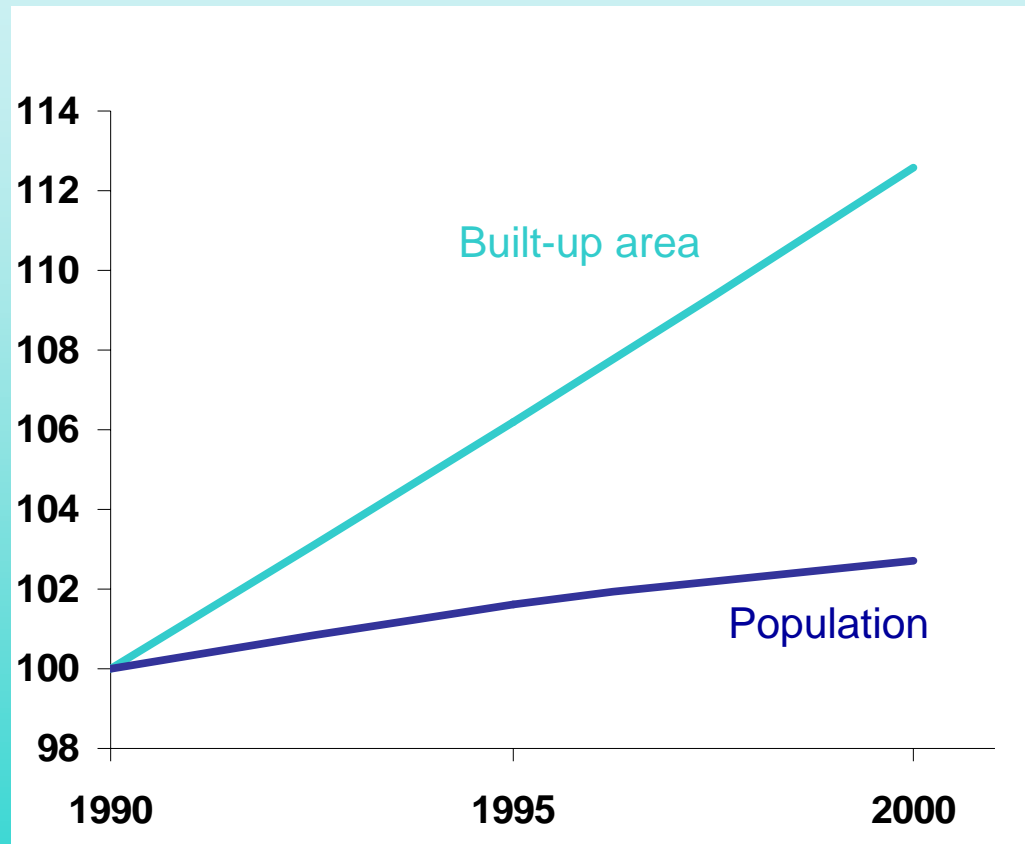
- The 3 Ts : Tourism, Transport, Territory
- Manage properly the Territory and you will make progress towards sustainability
- Any unsustainable trend reflects finally on the degradation of the Territory
- Environmental Sustainability is mostly about proper land use and physical planning

# Main trends in Spain (1990 – 2000)

-  Strong increase in artificial areas AND decrease of agricultural and natural areas
-  Moderate increase in artificial areas AND decrease of agricultural and natural areas
-  Increase in agricultural land
-  Increase in artificial and natural areas

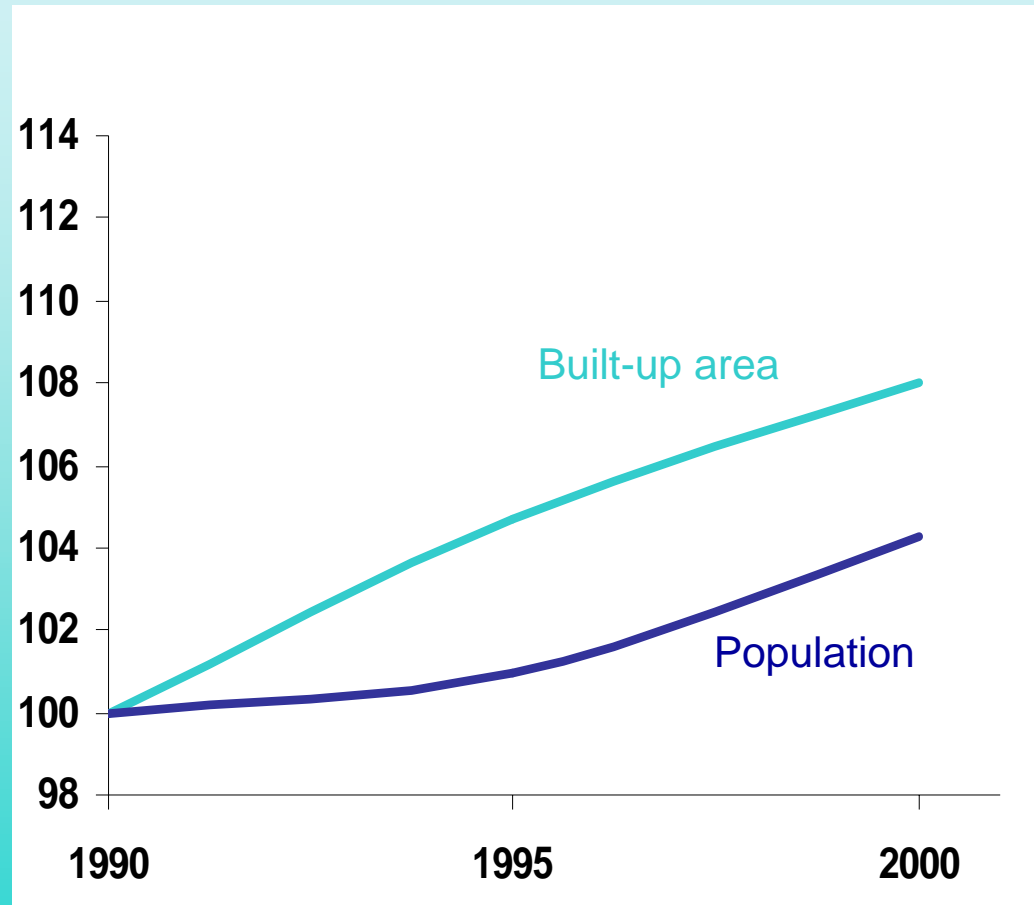


# (Un)Sustainable land use: Europe



EEA, 2003

# (Un)Sustainable land use: Spain



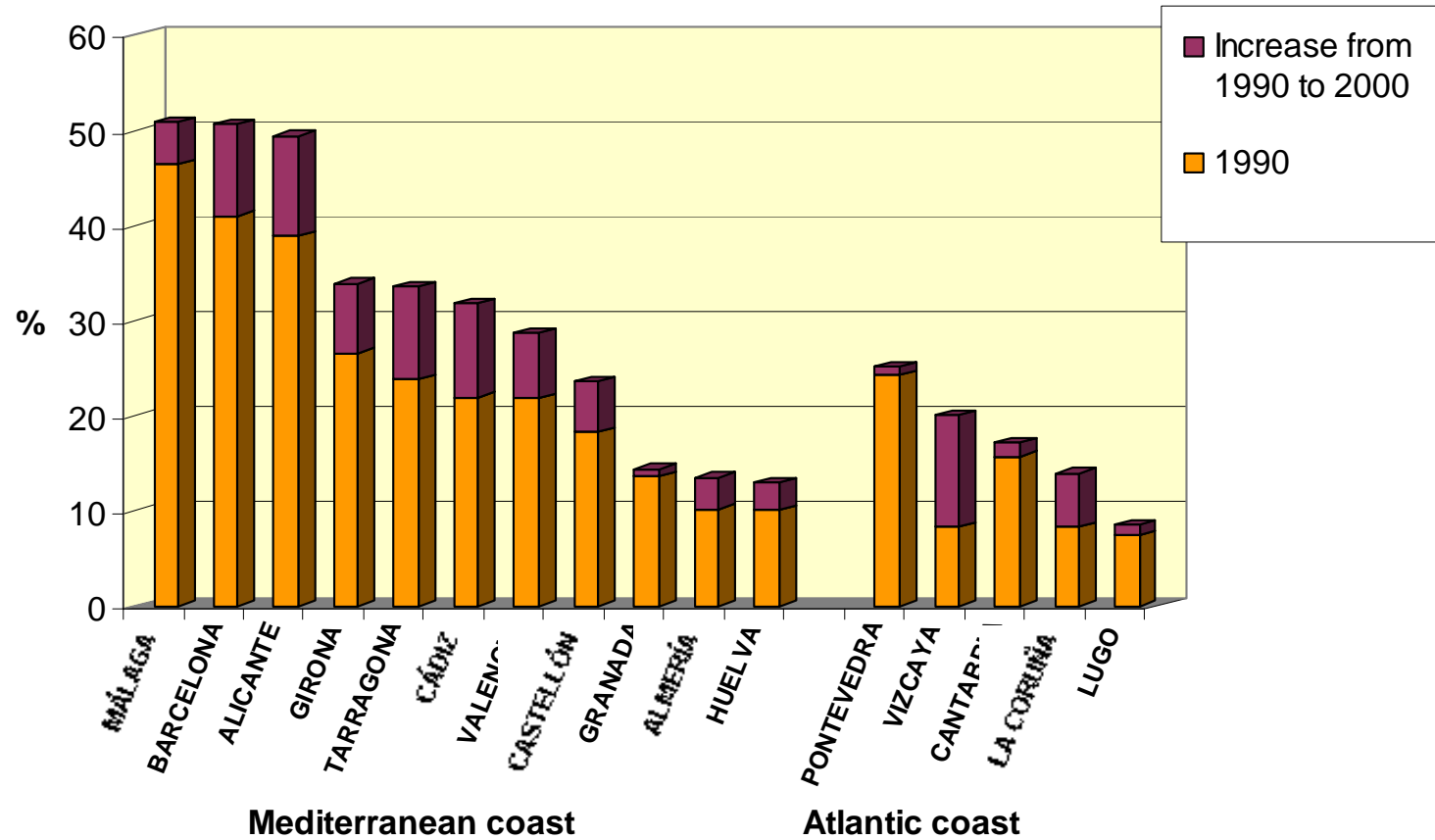
EEA, 2003

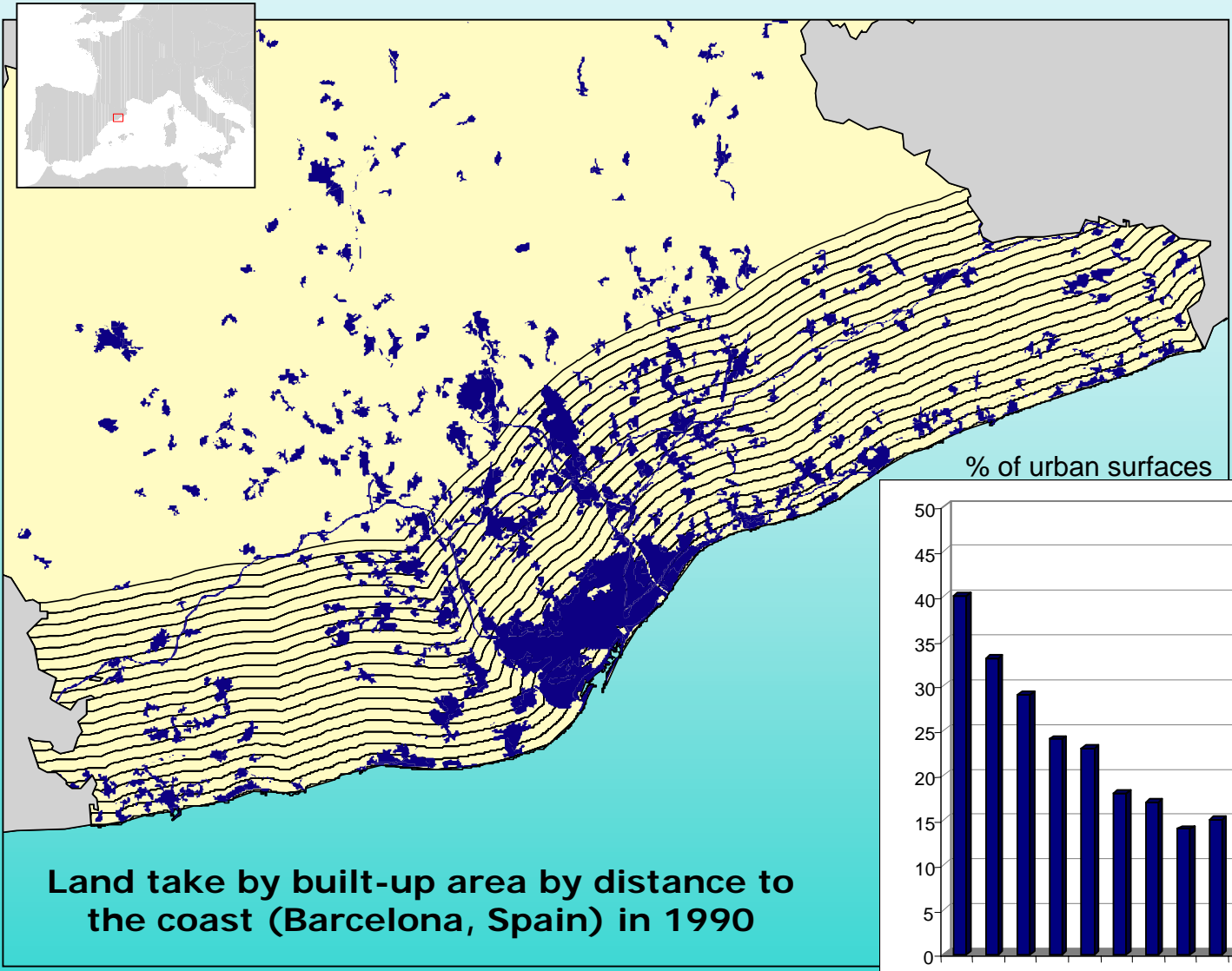
# Coastal urbanisation in Spain

75% of the population live  
in 3% of the land



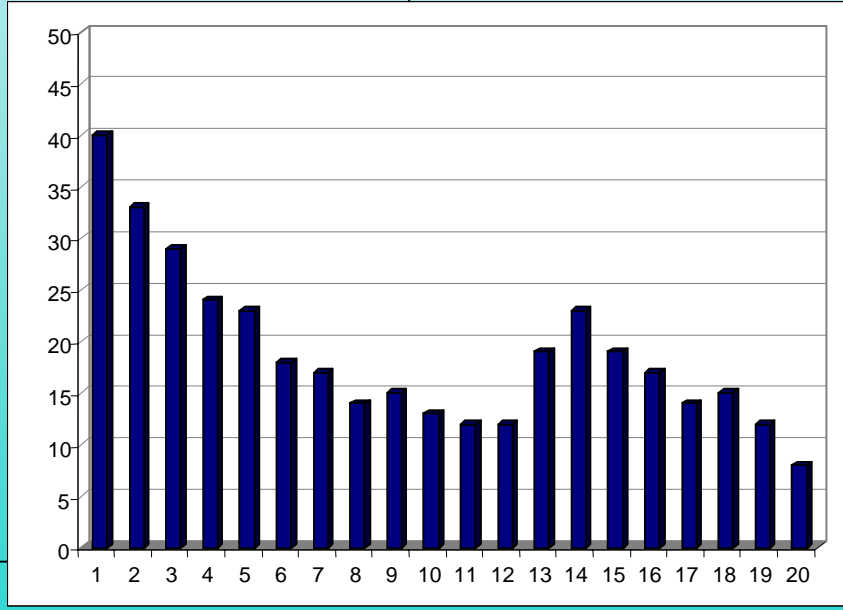
## Percentage of coastal built-up in the first km by NUTS 3 (province) in Spain (1990 & 2000)





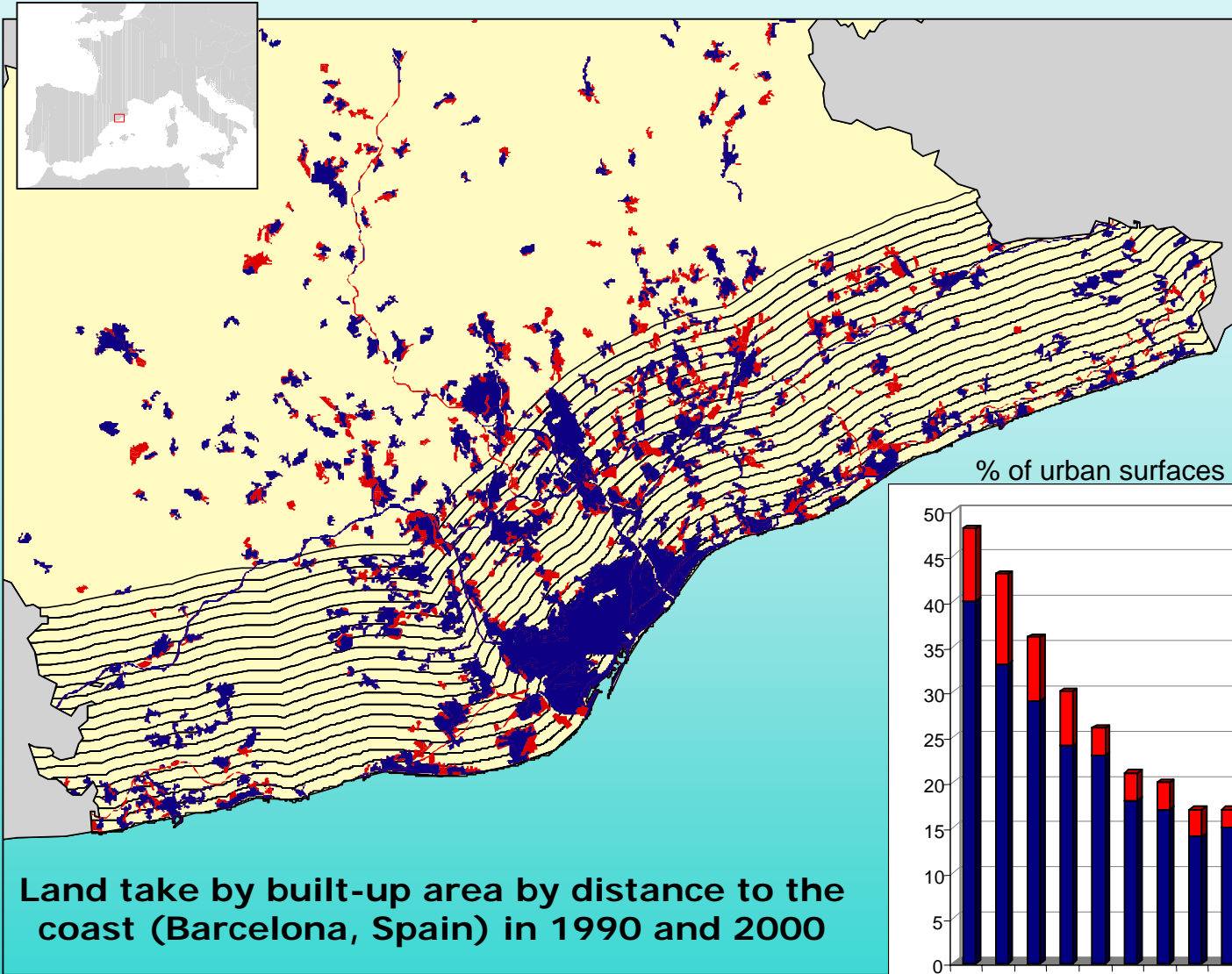
% of urban surfaces

Urban 1990



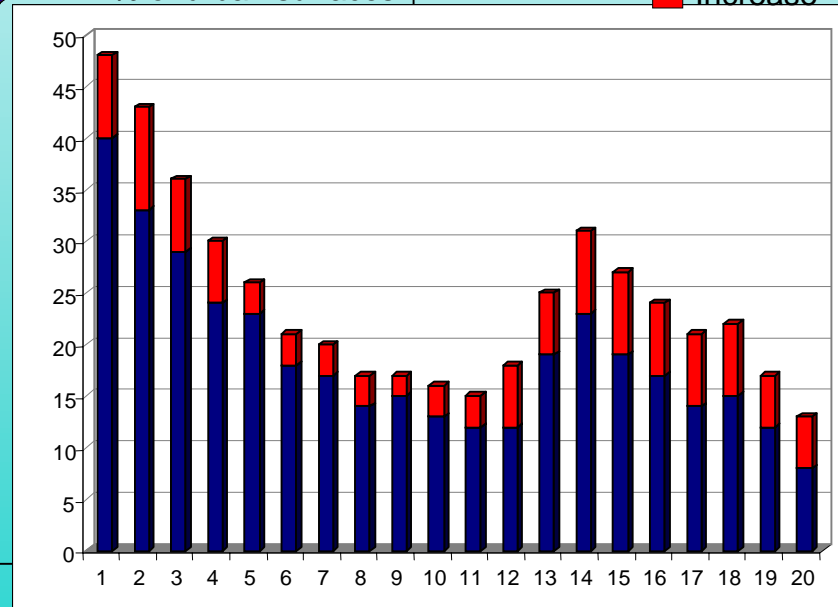


ETC-TE, 2004



% of urban surfaces

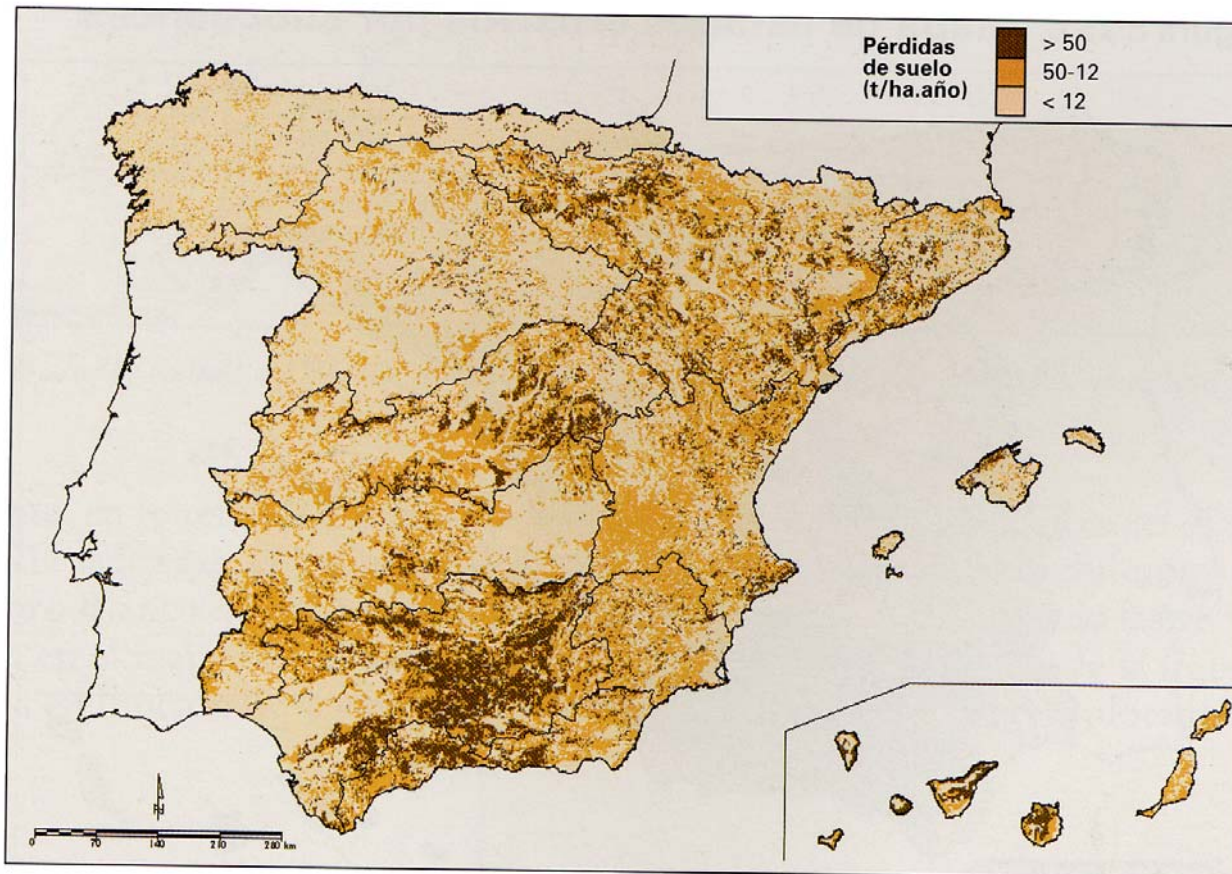
■ Urban 1990  
■ Increase



Distance to shoreline (Km)

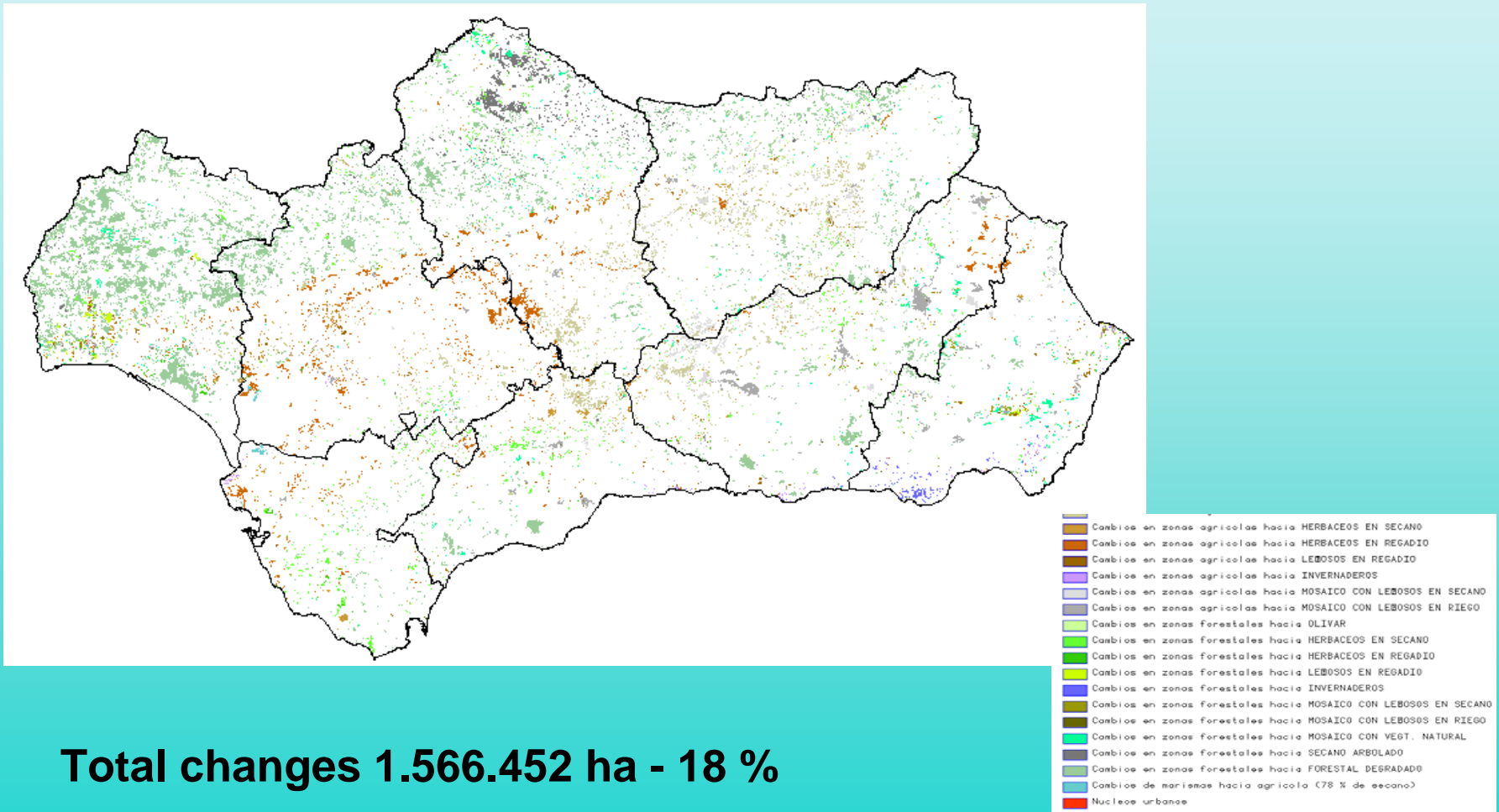
# Soil erosion

## Mapa de estados erosivos

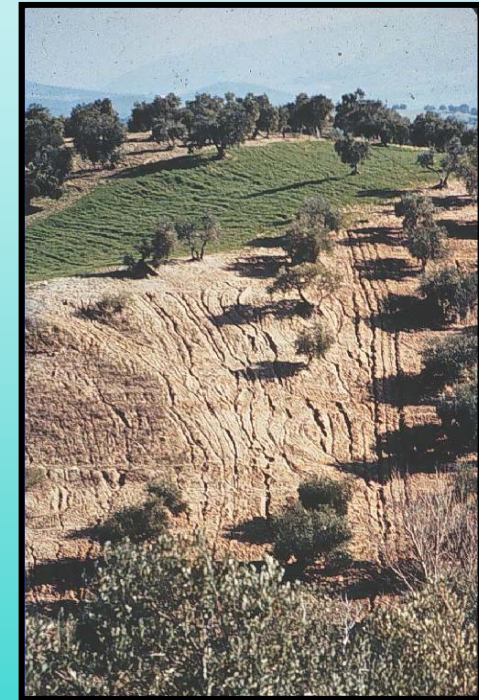
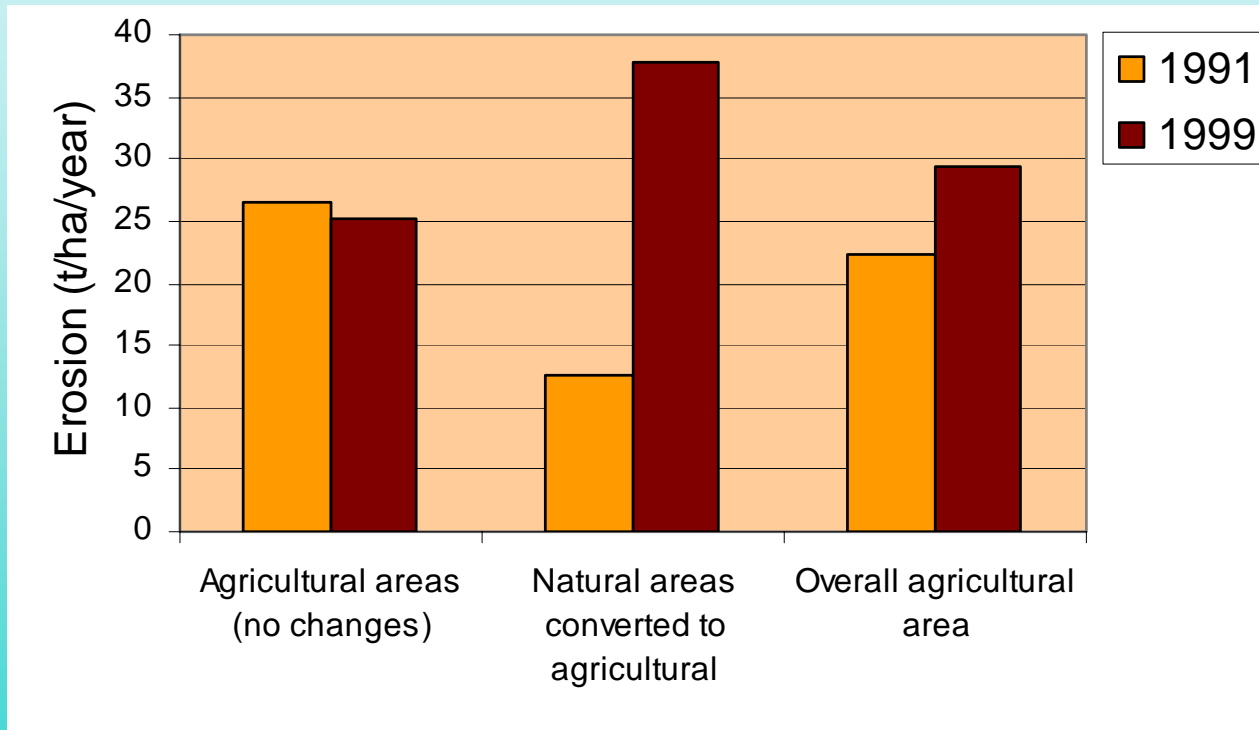


*Fuente: Borrador de trabajo del PAND, marzo de 2001. Fuente original: ICONA-MAPA, modificada*

# Andalucía: land use changes related to agriculture (1991-1999)

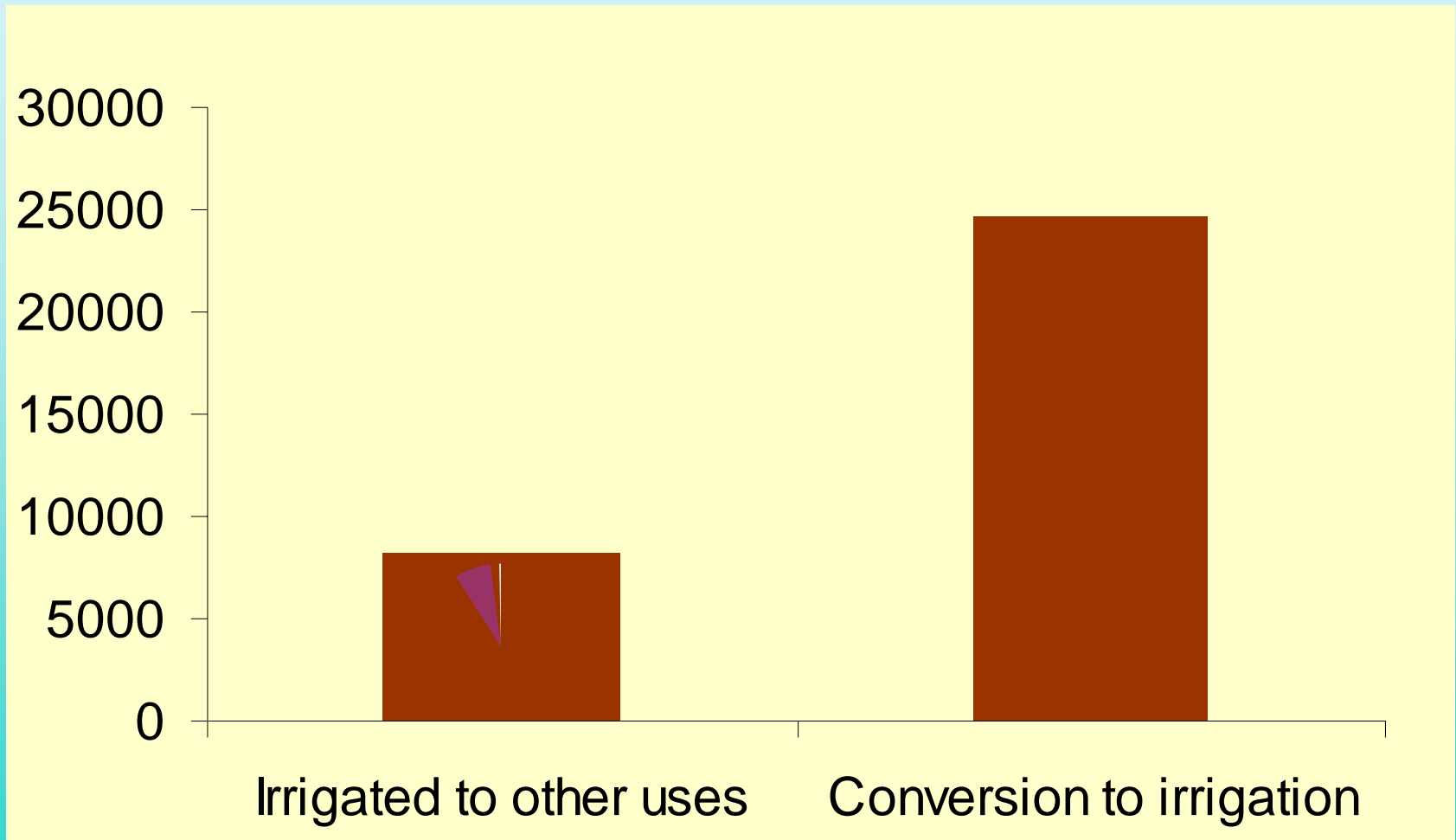


# Andalucía: impact of agriculture on soil erosion

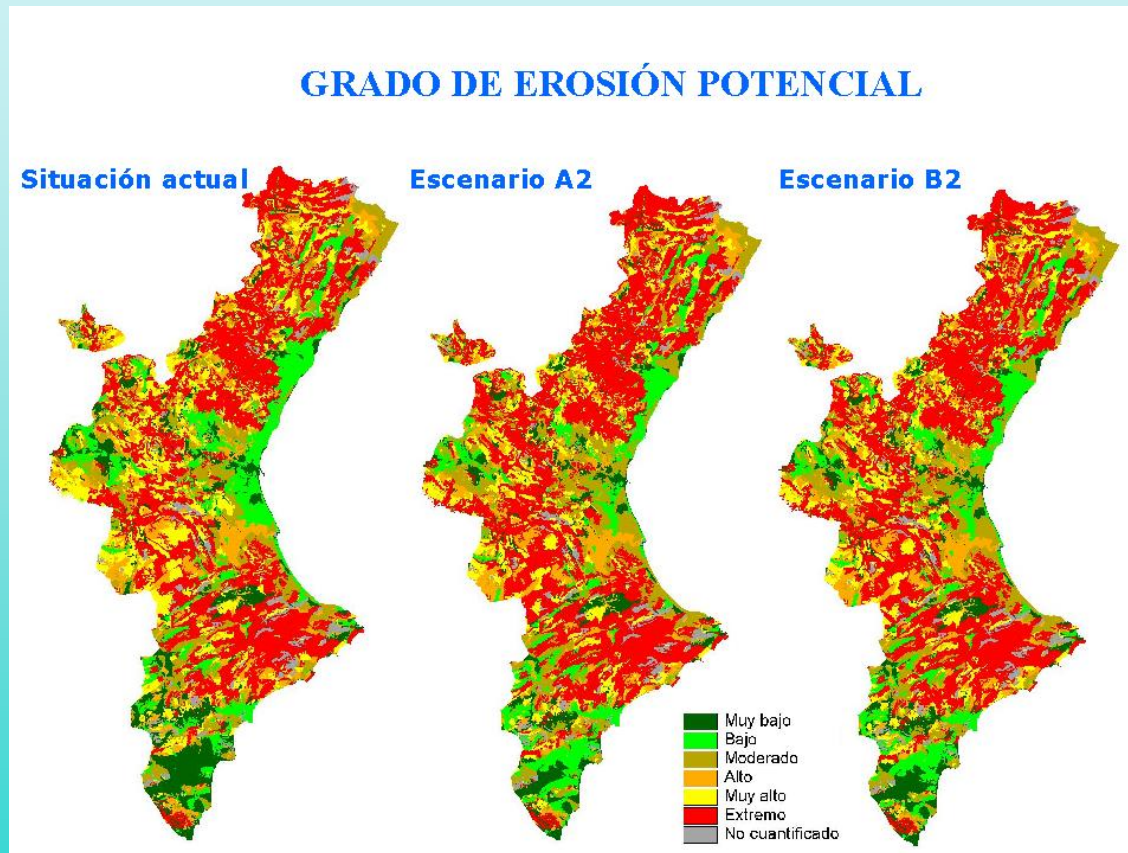


Junta de Andalucía, 2003

# Changes in irrigated land in Murcia



# Erosion risk under two scenarios of climate change. Valencia region



# Conclusions

- CLC is a very valuable tool :
- To show in an integrated way (use of layers) the changes in the territory and DPSIR links
- To communicate Env. situations and trends
- To represent/communicate alternative scenarios/projects/plans and related EIAs “the right choice”
- To progress in Sustainability and Good Governance
- In Spain it allows the harmonisation of databases and methodologies throughout the regions.